

FEATURES & SPECIFICATIONS

INTENDED USE — Slim, low-profile housing for ceiling or wall mounting. Matches AW Series in appearance.

Choice of flat-bottom diffusers — prismatic acrylic or matte white opal acrylic. Both available in high-impact versions. **Certain airborne contaminants can diminish the integrity of acrylic and/or polycarbonate.** [Click here for Acrylic-Polycarbonate Compatibility table for suitable uses.](#)

Diffuser hinges open from either side for easy cleaning and servicing.

For surface or stem mounting, individual or row installation.

Available in tandem-wired lengths.

CONSTRUCTION — Housing formed from cold-rolled 20-gauge steel. End plates welded to housing. Standard product complies with NYC requirements; no options necessary. No asbestos is used in this product.

Thermally protected, resetting, Class P, HPF, non-PCB, UL listed, CSA certified ballast is standard. Ballasts are sound rated A. Standard combinations are CBM approved and conform to UL 935.

Finish: High-gloss, baked white enamel finish. Five-stage iron-phosphate pretreatment ensures superior paint adhesion and rust resistance. Painted parts finished with high-gloss, baked white enamel.

ELECTRICAL — Fixture conforms to UL 1570 and is suitable for damp locations. AWM, TFN or THHN wire used throughout, rated for required temperatures.

ENERGY

Luminaire Efficacy Rating (LER) and Annual Energy Cost:

Two-lamp LER.FW = 62. Annual Energy Cost = \$3.87.

Based on 32W T8 lamp, 2850 lumens, and energy-saving electronic ballast. Ballast factor = .88, input watts = 61.

Calculated in accordance with NEMA standard LE-5.

LISTING — UL listed to US and Canadian safety standards (see Options). NOM Certified (see Options).

WARRANTY — 1-year limited warranty. Complete warranty terms located at:

www.acuitybrands.com/resources/terms-and-conditions

Note: Actual performance may differ as a result of end-user environment and application.

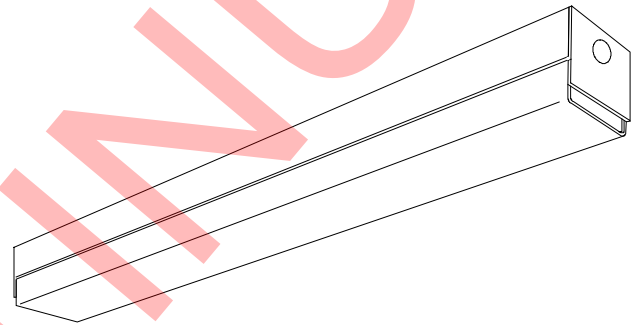
Specifications subject to change without notice.

| |
|----------------|
| Catalog Number |
| Notes |
| Type |

Corridor Acrylic Wraparound

CA

2', 3', 4' and 8' Length
1 or 2 Lamps



ORDERING INFORMATION

Lead times may vary depending on options selected. Consult with your sales representative.

Example: CA 2 32 MVOLT GEB10IS

| Series | Number of lamps | Lamp type | Diffuser | Voltage | Options |
|--|-----------------|---------------------------|-----------------------------|--------------------|---|
| CA Corridor wraparound | 1 | 14T5 14W T5 (22-1/2") | (blank) Prismatic | 347 ² | GEB10IS Electronic ballast, ≤10% THD, instant start |
| | 2 | 17 17W T8 (24") | AR High-impact prismatic | MVOLT ³ | GEB10RS Electronic ballast, ≤10% THD, program rapid start |
| For tandem double-length unit, add prefix T. Example: TCA ¹ | (Not included) | 21T5 21W T5 (34") | ACW Matte white | (Others available) | GEB10PS Electronic ballast, ≤10% THD, programmed start |
| | | 24T5HO 24W T5HO (22-1/2") | AWR High-impact matte white | | EL Emergency battery pack (nominal 500 lumens) ⁴ |
| | | 25 25W T8 (36") | | | GLR Internal fast-blow fuse ⁵ |
| | | 28T5 28W T5 (46-1/2") | | | GMF Internal slow-blow fuse ⁵ |
| | | 32 32W T8 (48") | | | RIF1 Radio interference filter (1 per fixture) |
| | | 54T5HO 54W T5HO (46-1/2") | | | CSA Listed and labeled to comply with Canadian Standards |
| | | | | | NOM NOM certified |

Accessories: Order as separate catalog number.

| | |
|-------|---|
| SQ_ | Swivel-stem hanger (specify length in 2" increments). |
| 1B | Ceiling spacer (1-1/2" to 2-1/2" from ceiling). |
| DSH24 | Double stem hanger for 4' fixtures, 24" stems. |

Notes

- 1 Tandem T5 consult factory.
- 2 Not available in GEB10PS.
- 3 Electronic ballast operates 120V through 277V.
- 4 Not available in T5 2' configuration.
- 5 Specify voltage.

CA Corridor Acrylic Wraparound

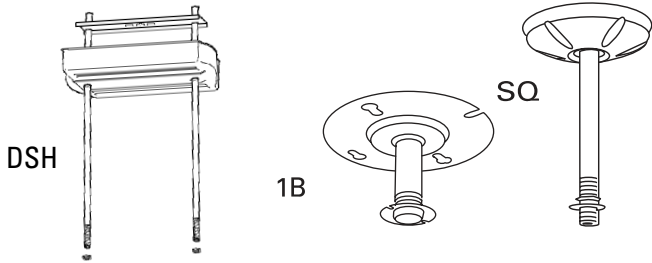
MOUNTING DATA

For unit or row installation, surface or stem mounting. Stem mounting not available on TCA units.

Individual installation — One double-stem (4' only) or two single-stem hangers required.

Row installation — One hanger per fixture plus one per row required.

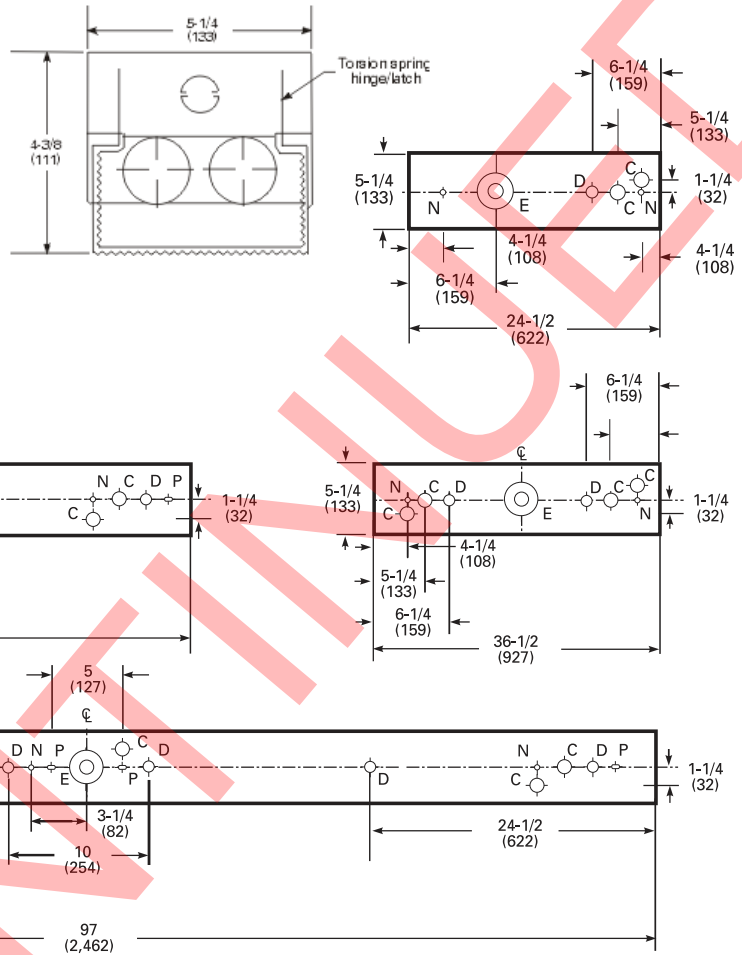
See ACCESSORIES below for hanging devices.



DIMENSIONS

Inches (millimeters). Subject to change without notice.

*Consult factory for T5 K.O. locations.



- C = 7/8 (22) Dia. K.O.
- D = 11/16 (17) Dia. K.O.
- E = 2 (51) Dia. K.O. and 7/8 (22) Dia. K.O.
- F = 7/16 (11) Dia. K.O.
- J = 11/16 x 1 (17 x 25) K.O.
- N = 5/16 (8) Dia. hole
- P = 5/16 x 3/4 (8 x 19) K.O.

PHOTOMETRICS

Calculated using the zonal cavity method in accordance with IESNA LM41 procedure. Floor reflectance are 20%. Lamp configurations shown are typical. Full photometric data on these and other configurations available upon request.

CA 2 32

Report LTL 6020 – Lumens per lamp = 2900

S/MH (along) 1.2 (across) 1.5

Coefficient of Utilization

| Ceiling | 80% | | | | 70% | | | | 50% | | | | 0% | | | | |
|---------|------|----|-----|-----|------|----|-----|-----|------|----|-----|-----|------|----|-----|-----|----|
| | Wall | 0% | 30% | 70% | Wall | 0% | 30% | 70% | Wall | 0% | 30% | 70% | Wall | 0% | 30% | 70% | |
| 0 | 87 | 87 | 87 | 83 | 83 | 83 | 77 | 77 | 77 | 64 | 64 | 64 | 64 | 64 | 64 | 64 | 64 |
| 1 | 78 | 77 | 70 | 75 | 71 | 68 | 66 | 63 | 61 | 51 | 51 | 51 | 51 | 51 | 51 | 51 | 51 |
| 2 | 71 | 64 | 59 | 68 | 62 | 57 | 57 | 53 | 50 | 42 | 42 | 42 | 42 | 42 | 42 | 42 | 42 |
| 3 | 65 | 57 | 50 | 62 | 54 | 49 | 51 | 46 | 42 | 36 | 36 | 36 | 36 | 36 | 36 | 36 | 36 |
| 4 | 59 | 50 | 43 | 56 | 48 | 42 | 45 | 40 | 36 | 30 | 30 | 30 | 30 | 30 | 30 | 30 | 30 |
| 5 | 54 | 44 | 37 | 52 | 43 | 36 | 40 | 34 | 30 | 26 | 26 | 26 | 26 | 26 | 26 | 26 | 26 |
| 6 | 50 | 39 | 33 | 47 | 38 | 32 | 36 | 30 | 26 | 22 | 22 | 22 | 22 | 22 | 22 | 22 | 22 |
| 7 | 46 | 35 | 29 | 44 | 34 | 28 | 32 | 27 | 23 | 19 | 19 | 19 | 19 | 19 | 19 | 19 | 19 |
| 8 | 42 | 32 | 25 | 40 | 31 | 25 | 29 | 23 | 20 | 17 | 17 | 17 | 17 | 17 | 17 | 17 | 17 |
| 9 | 39 | 29 | 22 | 37 | 28 | 22 | 26 | 21 | 17 | 14 | 14 | 14 | 14 | 14 | 14 | 14 | 14 |
| 10 | 36 | 26 | 20 | 35 | 25 | 19 | 24 | 18 | 15 | 12 | 12 | 12 | 12 | 12 | 12 | 12 | 12 |

Zonal Lumens Summary

| Zone | Lumens | % Lamp | % Fixture |
|--------|--------|--------|-----------|
| 0-30 | 886 | 15.3 | 20.4 |
| 0-40 | 1481 | 25.5 | 34.0 |
| 0-60 | 2627 | 45.3 | 60.4 |
| 0-90 | 3696 | 63.7 | 85.0 |
| 90-180 | 654 | 11.3 | 15.0 |
| 0-180 | 4350 | 75.0 | 100.0 |