

CY3-AD

CYLINDER LED LUMINAIRE
SURFACE MOUNT ADJUSTABLE

PROVISIONAL

ORDERING INFORMATION (CYLINDER)

QUICK SHIP ELIGIBLE

TILT AD Standard 60° 90 90° tilt ¹	RATING 1 Dry 2 Wet ¹	FINISH MA Machined Aluminum (Natural Aluminum with Clear Coat) WH Matte White (Powder Coat) BK Matte Black (Powder Coat) CF Custom Finish ²	CRI/ MODULE 80X 80+ CRI 95X 95+ CRI 80C 80+ CRI 90C 90+ CRI 97C 97+ CRI	SOURCE LUMENS 13A 1300lm ³ 22A 2220lm 28A 2850lm 10A 1000lm 14A 1420lm 25A 2480lm 38A 3768lm 20A 2050lm 31A 3114lm 19A 1869lm 28A 2840lm	COLOR TEMPERATURE 30 3000K 35 3500K 27 2700K 30 3000K 35 3500K 27 2700K 35 3500K 30 3000K 35 3500K 40 4000K	OPTIC 1 25° 2 40° 3 60°	POWER SUPPLY / DIMMING AN 120-277V 50Hz/60Hz Electronic Analog 0-10V EL 120V 50Hz/60Hz Electronic ELV RMT Remote Driver (See Remote Power Supply below)	EFFECTS DEVICE 0 No Lens ⁴ 1 Linear Spread ⁴ 2 Honeycomb Louver ⁴ 3 Clear Glass 4 Soft Focus 5 Frosted Glass 6 Frosted Soft Focus 7 Frosted Linear Spread ⁴ 8 Spread Glass
--	--	--	---	---	--	---	--	--

CY3 - [] - [] - [] - [] - [] - [] - [] - []

MOUNTING (ROUGH-IN OR FINISH-OUT, CHOOSE BETWEEN, SELECTING ONLY ONE)

ROUGH-IN <input type="checkbox"/> CY2/3-JBMP Concealed mounting plate [Ⓞ]	FINISH-OUT <input type="checkbox"/> CY2/3-SMK- [] - [] J-BOX 3/0 3" j-box 4/0 4" j-box FINISH WH White MA Machined Aluminum BK Black 3" or 4" j-box surface mount kit	FINISH-OUT <input type="checkbox"/> CY3-CMJB-2I- [] - [] FINISH WH White BK Black Ceiling mount j-box for 1/2" EMT conduit [Ⓞ]	FINISH-OUT <input type="checkbox"/> CY3-CMJB-2I-1T- [] - [] FINISH WH White BK Black CONDUIT 3/4 3/4" conduit 20 20mm conduit Ceiling mount j-box for 3/4" or 20mm EMT conduit
---	---	---	---

ACCESSORIES

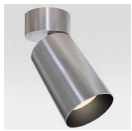
LENSES <input type="checkbox"/> LSL-CY3 Linear Spread Lens ⁴ <input type="checkbox"/> HCL-CY3 Honeycomb Louver ⁴ <input type="checkbox"/> CGL-CY3 Clear Glass Lens <input type="checkbox"/> SFL-CY3 Soft Focus Lens <input type="checkbox"/> FGL-CY3 Frosted Glass Lens <input type="checkbox"/> FSFL-CY3 Frosted Soft Focus Lens <input type="checkbox"/> FLSL-CY3 Frosted Linear Spread Lens ⁴ <input type="checkbox"/> SGL-CY3 Spread Glass Lens Note: Lenses as sealed in fixtures designated IP54 wet location are not interchangeable	BLANK OFF PLUG Blank off plug for use with ceiling mount j-box <input type="checkbox"/> CY3-CMJB- [] -PLG- [] EMT SIZE 1/2 .5" conduit plug 3/4 .75" conduit plug 20MM 20mm conduit plug FINISH WH White BK Black	REMOTE POWER SUPPLY <input type="checkbox"/> PS-RMT- [] - [] SYSTEM CONFIGURATION 80X-13A ³ 80X-22A 80X-28A 95X-10A 95X-14A 80C-25A 80C-38A 90C-20A 90C-31A 97C-19A 97C-28A Must match system configuration selected for fixture	POWER SUPPLY 1TR1 120V 60Hz Triac 1L21 120V 60Hz Lutron Forward Phase 2-Wire UL31 120-277V 50Hz/60Hz Lutron A-Series EcoSystem/3-Wire ULH1 120-277V 50Hz/60Hz Lutron Hi-lume 1% EcoSystem with Soft On Fade-to-Black™ (Not available for Export) UAN2 120-277V 50Hz/60Hz Analog 0-10V UND1 120-277V 50Hz/60Hz Non-Dimming UE1 120-277V 50Hz/60Hz ELdoLED Analog 0-10V UED1 120-277V 50Hz/60Hz ELdoLED DALI
---	---	---	---

FIXTURE PERFORMANCE (PRELIMINARY)

	LUMEN PACKAGE										
	80X-13A	80X-22A	80X-28A	95X-10A	95X-14A	80C-25A	80C-38A	90C-20A	90C-31A	97C-19A	97C-28A
Power Consumption [W]	23	31	37.8	25.3	30	19.8	34.3	19.8	34.3	19.8	34.3
Nominal Lumen Package Offering (lm)	1300	2220	2850	1000	1420	2480	3768	2050	3114	1869	2840
Delivered Lumens - 25° Optic (lm)	900	1523	1973	692	983	1711	2600	1415	2149	1290	1960
Delivered Lumens - 40° Optic (lm)	911	1542	1997	701	995	1761	2675	1456	2211	1327	2016
Delivered Lumens - 60° Optic (lm)	916	1550	2008	705	1000	1885	2864	1558	2367	1420	2158
Delivered Luminous Efficacy - 25° Optic (lm/W)	39	49	52	27	33	71.1	62.9	59.3	52.0	54.1	47.4
Delivered Luminous Efficacy - 40° Optic (lm/W)	40	50	53	28	33	73.8	64.7	61.0	53.5	55.6	48.8
Delivered Luminous Efficacy - 60° Optic (lm/W)	40	50	53	28	33	79.0	69.3	65.3	57.3	59.5	52.2

FOOTNOTES

- ¹ Only available with powder coat finishes
 - ² Custom powder coat finishes will be assigned a unique custom 2-digit suffix model # upon receipt of order; consult factory to confirm preferred color availability (custom plating not available)
 - ³ Not available with "ULH1" power supply
 - ⁴ Not available for Wet location
- [Ⓞ] Quick Ship eligible options (Must add "-QS" to end of model number if requesting Quick Ship option)



CY3-AD

CYLINDER LED LUMINAIRE
SURFACE MOUNT ADJUSTABLE

PROVISIONAL

CYLINDER

A SPECIAL FEATURES

Die-cast aluminum body; power supply may be integrated into fixture canopy; tapered aperture for increased efficiency; toolless 357° rotation and 60° hot aim tilt standard; 90° tilt option available; may be mounted to ceiling as downlight or floor as uplight; (90° option in powder coat finishes only). Consult factory to confirm custom color availability (custom plating not available).

B OPTICS/ EFFECTS DEVICES

Cylinder accepts 1 total lens; Wet location cylinder requires lens sealed in place.

MOUNTING

C WALL-MOUNT

Cylinder may be wall mounted using any mounting option. If used outdoors, cylinder must be angled downwards to maintain warranty.

D CY2/3-JBMP

Mounting plate (concealed) for standard j-box. To be installed during rough-in prior to substrate. Fixture to mount flush with minimalist transition with hidden hardware to standard j-box installed above ceiling.

E CY2/3-SMK-3/0

Surface mount kit includes mounting plate and 4" concealer plate that mounts between fixture and standard 3" 3/0 j-box for existing installations where standard j-box cutout is to be concealed.

F CY2/3-SMK-4/0

Surface mount kit includes mounting plate and 5" concealer plate that mounts between fixture and standard 4" 4/0 j-box for existing installations where standard j-box cutout is to be concealed.

G CEILING MOUNT JUNCTION BOXES

Ceiling mounted junction boxes perfectly matches the cylinder profile for a continuous, integrated look where exposed ceiling mount junction box and conduit applications apply; j-box is IP10 rated; painted finishes only. One blank off plug supplied with each CY3-CMJB. Additional plugs may be ordered. (* Specify j-box color).

CY3-CMJB-2I-*

For use with 1/2" EMT conduit only. Features two conduit entrances on either side.

CY3-CMJB-2I-1T-*3/4

For use with 3/4" EMT conduit only. Features two conduit entrances on sides of j-box and 1 conduit entrance on top of j-box. Conforms to NYC code.

CY3-CMJB-2I-1T-*20

For use with 20mm international EMT conduit only. Features two conduit entrances on sides of j-box and 1 conduit entrance on top of j-box.

NOTES

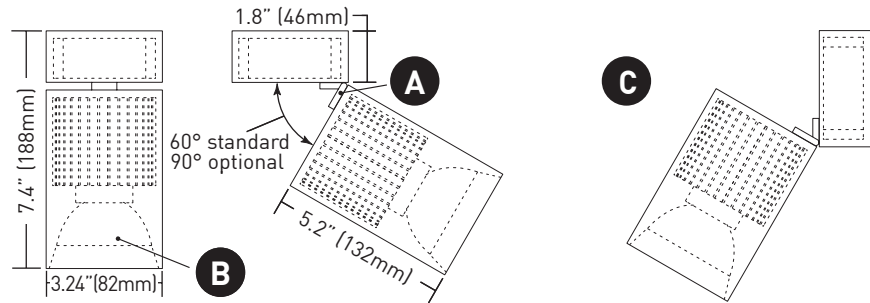
CY2/3-JBMP and CY2/3-SMK-3/0 & 4/0 not recommended for use with pancake style j-box.

REMOTE POWER SUPPLY

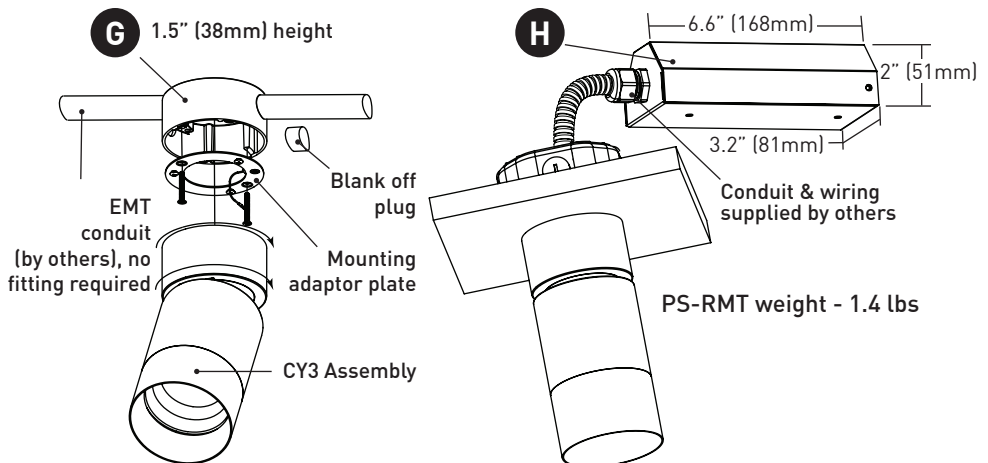
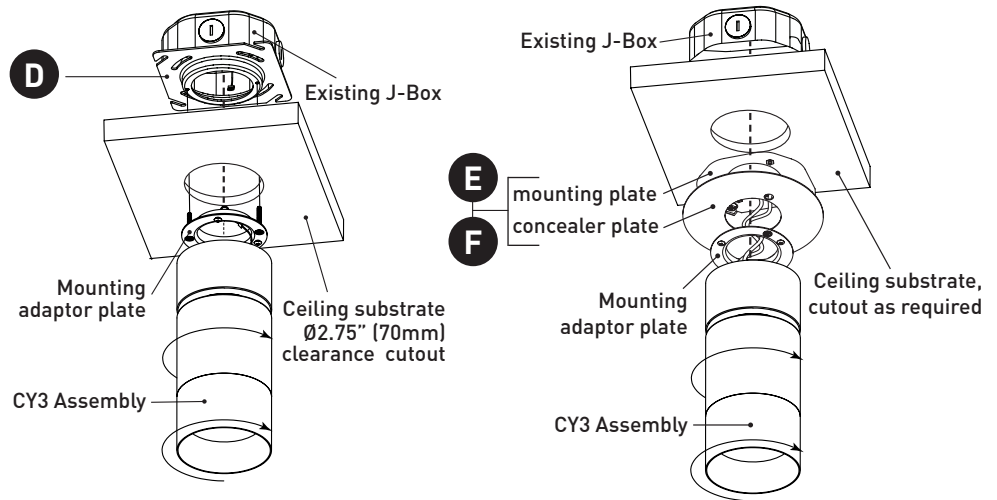
H PS-RMT

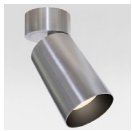
Remote power supply provides additional driver options. Mounting device still required. Consult factory for maximum allowable secondary run lengths between PS-RMT and fixture.

DIMENSIONS / DRAWINGS



Fixture weight - 2.5 lbs





CY3-AD

CYLINDER LED LUMINAIRE
SURFACE MOUNT ADJUSTABLE

PROVISIONAL

TECHNICAL

CONSTRUCTION

Die-cast aluminum body; extruded aluminum internal heat-sink; powder coat finishes are granulated powder coat.

LED

LED modules available in configurations of 80+ CRI 1300, 2220, 2480, 2850, and 3768 lumen packages; 90+ CRI 2050 and 3114 lumen packages; 95+ CRI 1000 and 1420 lumen packages; 97+ CRI 1869 and 2840 lumen packages. Lumen packages denote raw LED initial lumens. Delivered lumens vary. Color temperatures are 2700K (+/- 40K), 3000K (+/- 50K), 3500K (+/- 60K), and 4000K (+/- 70K), with beam angle options of 25°, 40°, and 60°. Average rated lamp life: 50,000 hours. LED module and integral driver are field-replaceable.

DIMMING PROTOCOL

Analog 0-10V and ELV integral drivers dim to nominal 10% lm output. PS-RMT remote 1TR1 & UAN2 dim to nominal 10%; 1L21 & UL31 dim to 1% lm output; ULH1 dims to 1% and features Fade-to-Black™; UEA1 & UED1 dim to 1/10th of 1%.

MOUNTING

Cylinder is supplied with a mounting adapter plate, which integrates with required additional mounting accessories specified separately according to field application conditions, providing a minimalist transition from standard 3/0, 4/0, or 4" square junction boxes and accommodating ceiling thicknesses of .44" (7/16", 12mm) to .75" (3/4", 20mm). Ceiling-mount junction boxes available for 1/2" (12.7mm), 3/4" (19mm), and 20mm conduits and feature concealed internal clamps for clean fitting-free conduit exit and entry.

LISTING

TUV/CTUV listed to the UL1598 standard. IP10 rated for interior/ dry/ damp location use, or optional IP54 rated (only with powder coat finishes) for exterior/ wet location use. Patent pending.

WARRANTY

Manufacturer's one-year warranty guarantees product(s) listed to be free from defects in material, workmanship under normal use and service. Warranty is conditional upon the use of manufacturer-supplied transformer or ballast. LED warrantied to operate with 70% lumen maintenance from the date of sale by Seller for 3 years. See full conditional warranty for complete details.

DIMMING COMPATIBILITY

LED DRIVER COMPATIBILITY

Power supply UEA1 Dimmer/ Switch Control Manufacturer	Family/ Model #	Recommended Curve
Busch-Jaeger	2112U-101	Logarithmic
Jung	240-10	Logarithmic
Leviton Lighting Controls	IP710-DLX	Logarithmic
Lightolier Controls	ZP600FAM120	Logarithmic
Lutron Electronics	Nova T® - NTFTV	Linear
Lutron Electronics	Diva® - DVTV	Linear
Lutron Electronics	Diva® - NFTV	Linear
Merten	5729	Logarithmic
Pass & Seymour	CD4FB-W	Logarithmic
The Watt Stopper	DC1V1	Logarithmic
Sensor Switch	n10 EZ	Linear
Synergy	ISD BC	Logarithmic
Lighting Control Systems		
Lutron Electronics	GrafixEye® GRX-TVI w GRX3503	Linear
Lutron Electronics	Energy Savr Node™ - QSN-4T16-S	Linear
Lutron Electronics	TVM2 Module	Linear
Crestron®	GLX-DIMFLV8	Logarithmic
Crestron®	GLXP-DIMFLV8	Logarithmic
Crestron®	GLPAC-DIMFLV4-*	Logarithmic
Crestron®	GLPAC-DIMFLV8-*	Logarithmic
Crestron®	GLPP-DIMFLVEX-PM	Logarithmic
Crestron®	GLPP-1DIMFLV2EX-PM	Logarithmic
Crestron®	GLPP-1DIMFLV3EX-PM	Logarithmic
Crestron®	DIN-A08	Logarithmic
Crestron®	DIN-4DIMFLV4	Logarithmic
Crestron®	CLS-EXP-DIMFLV	Logarithmic
Crestron®	CLCI-1DIMFLV2EX	Logarithmic
ABB	SD/S 2.16.1	Logarithmic

LUTRON DRIVER COMPATIBILITY

Power supply 1L21 Product Family	Part No.	Fixtures Per Control (120V only)
Maestro WirelessR 600 W dimmer	MRF2-6ND-120-	1-8
Caséta® Wireless Pro 1000 W dimmer	PD-10NXD-	1-13
GRAFIK T™ CL® dimmer	GT-250M-, GTJ-250M-	1-10
HomeWorks® QS adaptive dimmer	HQRD-6NA-	1-8
HomeWorks® QS 600 W dimmer	HQRD-6ND-	1-8
HomeWorks® QS 1000 W dimmer	HQRD-10ND-	1-13
RadioRA® 2 adaptive dimmer	RRD-6NA-	1-8
RadioRA® 2 1000 W dimmer	RRD-10ND	1-13
myRoom™ DIN power module	MQSE-4A1-D	1-6 (per output), 1A max driver input current
HomeWorks® QS DIN power module	LQSE-4A1-D	1-6 (per output), 1A max driver input current
HomeWorks® QS wallbox power module	HQRJ-WPM-6D-120	2-10 (per output), 26 total per module
HomeWorks® wallbox power module	HWI-WPM-6D-120	2-10 (per output), 26 total per module
GRAFIK Eye® QS control unit	QSGR-, QSGRJ-	2-10 (per output), 26 total per module
GRAFIK Eye® 3000 control unit	GRX-3100-, GRX-3500-	2-10 (per output), 26 total per module
RPM-4U module (LCP, HomeWorks® QS, GRAFIK Systems™, Quantum®)	HW-RPM-4U-120, LP-RPM-4U-120	2-26 (per output), 26 total per module
RPM-4A module (LCP, HomeWorks® QS, GRAFIK Systems™, Quantum®)	HW-RPM-4A-120, LP-RPM-4A-120	1-13 (per output), 26 total per module
GP dimming panels	Various	1-26
Ariadni® C•L® 250 W dimmer	AYCL-253P-	1-8
Diva® C•L® 250 W dimmer	DVCL-253P-DVSCCL-253P-	1-8
Nova T® C•L® 250 W dimmer	NTCL-250-	1-10

Power supply UL31 Product Family	120V Part No.	277V Part No.	Fixtures Per Control	
NovaT®	NTF-10-	NTF-10-277-	1-41	1-44
	NTF-103P-	NTF-103P-277-	1-20	1-33
Nova®	NF-10-	NF-10-277-	1-41	1-44
	NF-103P-	NF-103P-277-	1-20	1-33
Skylark®	SF-10P-	SF-12P-277-	1-20	1-33
	SF-103P-	SF-12P-277-3	1-20	1-33
Diva®	DVF-103P-	DVF-103P-277-	1-20	1-33
	DVSCF-103P-	DVSCF-103P-277-	1-20	1-33
Ariadni®	AYF-103P-	AYF-103P-277-	1-20	1-44
	MAF-6AM-	MAF-6AM-277-	1-15	1-20
Maestro®	MSCF-6AM-	MSCF-6AM-277-	1-15	1-20
	MRF2-F6AN-DV-		1-15	1-33
RadioRA® 2	RRD-F6AN-DV-		1-15	1-33
HomeWorks® QS	HQRD-F6AN-DV		1-15	1-33
	PHPM-3F-120	-	1-41	-
Interfaces	PHPM-3F-DV		1-41	1-88
GP Dimming Panels	Various		1-41	1-88
PowPak™	RMJ-EC032-DV-B		32 per EcoSystem link	
with EcoSystem	FCJ-ECO		3 per EcoSystem link	
Energy Savr Node™	QSN-1ECO-S, QSN-2ECO-S		64 per EcoSystem link	
with EcoSystem	QSGRJ-_E, QSGR-_E	-	64 per EcoSystem link	
GRAFIK Eye® QS	Various		64 per EcoSystem link	
Quantum®	Various		64 per EcoSystem link	

