

The Brightest Idea is Emergency Lighting with LEDs

GENERAL DESCRIPTION

A powerful LED fixture designed for very low profile recessed ceiling mount, or optional surface mount, suitable for exterior or interior wet locations including wash down, at heights over 40 ft from floor level. Dual function operation in either emergency or normal mode, powered from the Sigtex central battery system at 24VDC.



CONSTRUCTION

- LEDs and electronics encased in a UV stabilized, abrasion-resistant polycarbonate lens with an IP67 rated watertight seal.
- Recessed Mount- faceplate from extruded machined aluminum, available with brushed finish or a variety of satin enamel paint colors.
- Surface Mount- steel housing with bracket mount locations and multiple knockouts for wiring connection.
- Composite outdoor rated gasket seal for wet location operations.

APPLICATIONS

- **Standard Model:** Maximum Floor Coverage from Ceiling Heights up to 40 Feet and More
- **Wide Angle Lens Option:** Maximum Floor Coverage from a Standard Ceiling Height
- **Spreader Lens Option:** Path of Egress Lighting from Ceiling Heights of 40 Feet and More

ENERGY EFFICIENT OPERATION

- Dual function operation for normally on night or security lighting as well as emergency lighting.
- Very low power consumption in night/ security mode. The security lighting circuit is independent of emergency lighting and may be switched manually, by an exterior photocell, or other automatic means.
- Over 50,000 hour lamp life in normal use.
- IES photometric data available for all models.

ELECTRONICS

- Operates with Central Battery System including low voltage normal lighting operation. See CBS data sheet.
- Lamps are connected in parallel. If one string of lamp fails, one or more strings will continue in operation.
- Power supply delivers regulated current and voltage to LED lamps at optimum levels to maximize lamp life.
- Twenty four LEDs operating at 26 watts 2,700 lumens light output in emergency and normal ON mode.
- LED color temperature 4,700K and CRI of 70. 70% lumen maintenance (L70) at 50,000 hrs.

CODES

- Central battery system listed to UL 924 for emergency and normal lighting operation. LED Lamp Assembly ROHS compliant, LM-79 tested, and rated IP67.

WARRANTY

- 3 year total customer satisfaction warranty. For details see product catalog technical data section



FIXTURE SCHEDULE

MODEL	CATALOG NO
APPROVAL	JOB INFORMATION

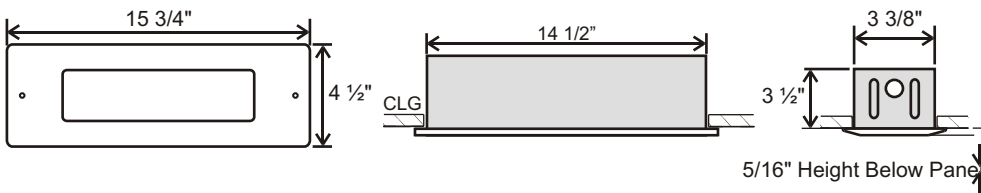


SUGGESTED SPECIFICATIONS:

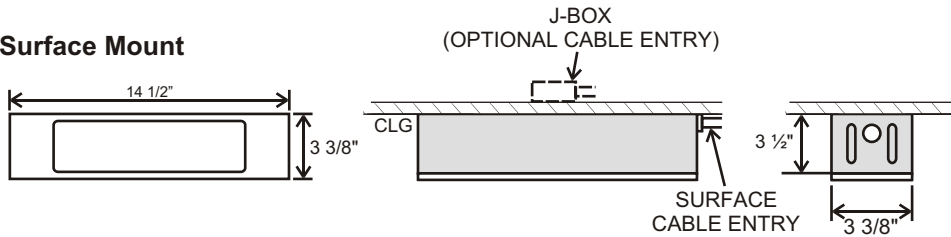
Install MOONLITE™ Series MHE High Output LED emergency lighting fixture manufactured by Sigtex Inc., available as a remote device connected to a central battery power source. See Central Battery System (CBS) data sheet. Upon loss of AC building power, lighting will be activated for a minimum of 90 minutes under battery power, in compliance with UL 924 and NFPA LSC Code 101. In remote configuration, the unit may be specified to operate continuously for security or night lighting, as required.

MOUNTING DATA & DIMENSIONS:

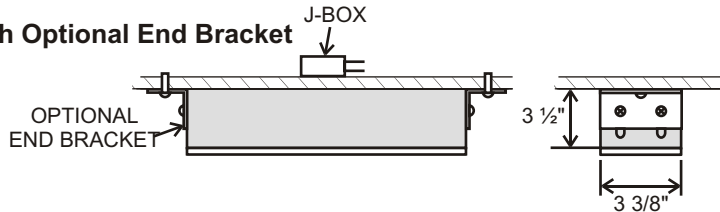
Recess Mount



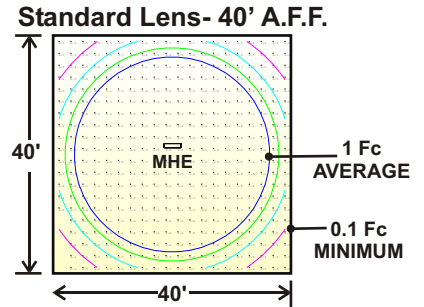
Surface Mount



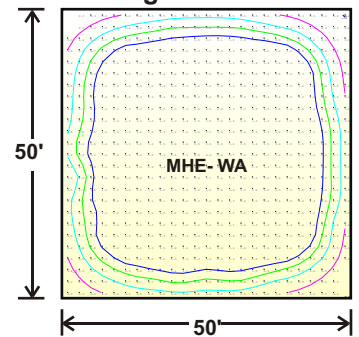
Surface Mount with Optional End Bracket



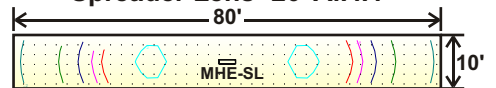
TYPICAL SPACING



Wide Angle Lens- 10' A.F.F.



Spreader Lens- 20' A.F.F.



CONTACT SIGNTEX FOR LAYOUT ASSISTANCE

NOTE: TESTED IN ACCORDANCE WITH IES STANDARD LM-79-08 FOR SOLID STATE LIGHTING PRODUCTS. FOR REFERENCE ONLY, STANDARD REFLECTANCES 80/50/20. SIGNTEX IS NOT RESPONSIBLE FOR SPECIFIC CONDITIONS THAT MAY ALTER THE RESULTS. COMPLETE IES PHOTOMETRIC DATA AVAILABLE AT WWW.SIGNTEXINC.COM FOR YOUR CONVENIENCE.

**Emergency Power Rating: 30 WATTS
Normal On Option (SEC): 30 WATTS**

ORDERING INFORMATION: EXAMPLE: MHERE30SW-WA

MHE	RE	30	S	W	-	WA
MODEL SERIES	OPERATION	EMERGENCY/ SECURITY POWER RATING	MOUNT	FINISH		OPTIONS
MHE	RE= Remote for operation with Central Battery System	30= 30 Watts	S= Surface R= Recessed	W= Satin White A= Aluminum X= Custom		WA= Wide Angle SP= Spreader Lens SEC= Security Lighting/ Normal On EB = End Bracket PEN= Pendant Mount* *Standard 12". Contact factory for other sizes. SV= Pendant Swivel Mount



Sigtex Inc
LIGHTING

220 VFW Avenue, Grasonville, MD 21638
TEL: (410) 827-8300 Fax: (410) 827-8866
sales@sigtexinc.com www.sigtexinc.com

DISTRIBUTOR:

Specifications and Dimensions subject to change without notice.