

EC^{●●●●●●●●●●}SENSE[®]



blomingsb



EcoSense®

OUR GOAL: TO SAVE THE WORLD FROM BAD LIGHTING

We are experts in our space with over 100 years of cumulative LED experience and a compelling patent portfolio. We are sincerely committed to change the way you see and use lighting.

EcoSense is dedicated to thoughtfully designing and developing forward-thinking LED Lighting solutions for commercial, retail, and hospitality environments. We develop high performance, energy-efficient luminaires that meet the exacting demands and creative visions of the design community. We pay considerable attention to the mechanical and optical design of all EcoSense products so that you can be assured the highest quality product in the market.

POWERFUL UPGRADES

This year we have doubled our product line to include a select range of ENERGY STAR® qualified products including a wide variety of reduced wattage options to meet every project requirement. We have dramatically improved fixture efficacies by up to 80% and simplified installation with new adjustable mounting options. We have also added 277V option and 0-10V dimming compatibility, making EcoSense your go-to partner for all project requirements.

New Dimming Technology

EcoSense® has mastered smooth, flicker-free dimming of LED luminaires down to 0%.

With very deliberate and precise engineering, we have designed an internal system, pairing advanced power management with all-NEW patent-pending dimming technology. This design unites the efficiencies of high-quality LEDs with a dynamic dimming circuit and a proprietary electronic low voltage driver. The result is continuous, flawless dimming down to 0% output power. The distinct advantage is smooth architectural dimming at low levels, making this the most forward-thinking LED luminaire dimming technology available in the market.



SEEING IS BELIEVING...

Scan here to see our new dimming technology video demonstration.



ADVANCED POWER MANAGEMENT

All EcoSense luminaires are driven with power on board technology that not only results in optimized operational efficiencies, but also greatly improves installation efforts and cost by eliminating the need for external supplies.



WORLD CLASS COLOR QUALITY

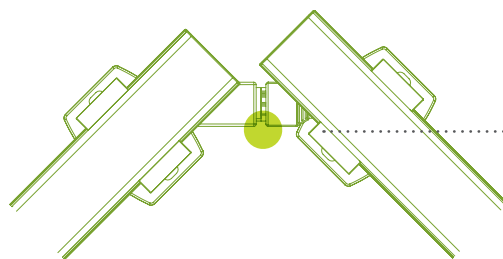
We take an extra step towards excellence with our proprietary color consistency process. Starting with high quality, high CRI LEDs, we then add another level of scrutiny that results in superior color uniformity in every fixture. The result is beautifully uniform and consistent lighting in any application.





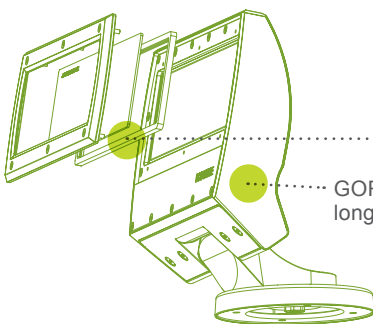
We've Got You Covered

Our products are designed with versatility, making last minute adjustments simple without compromising beautiful lighting design.



FLEXIBLE

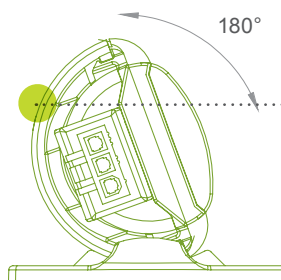
Flexible connectors to get around corners



INTERCHANGEABLE

Field interchangeable lenses for easy modifications

GORE® Vent for longer lifetime



SIMPLE

Simple out of the box installation with adjustable 180° integral brackets

DID YOU KNOW?

60%

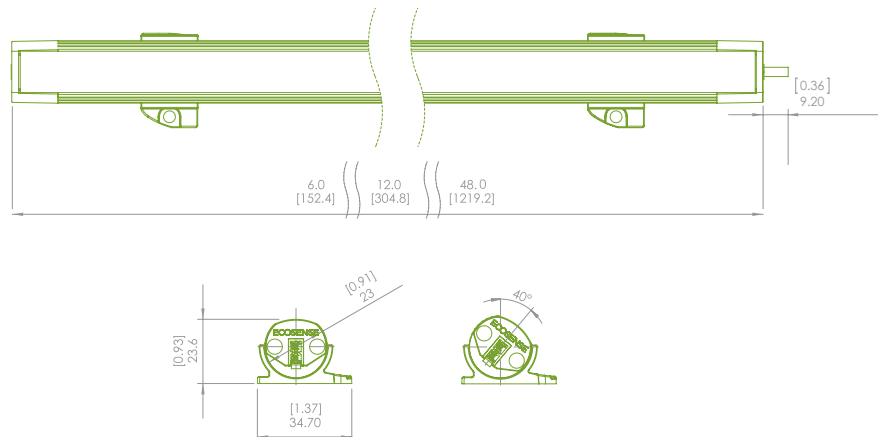
of lighting installations are modified in the final two weeks

Slim Cove INT

The new Slim Cove INT is our smallest line-voltage linear fixture delivering a powerful performance. At 240 lm/LF and an efficacy of 60 lm/w, this ultra slim linear is the most efficient luminaire in the small profile category, measuring in at only .9" (23mm) Dia. The Slim Cove INT is designed to link together tightly, eliminating dark socket shadows between fixtures for a seamless design. The Slim Cove INT is a great alternative to low voltage systems that require costly external power supplies and complicated installation. This is a non-dimming, easy-to-install solution that is ideal for indoor uses, such as small coves, toe kicks, under cabinet, display, signage and accent lighting.

- Non-Dimming, On-Off Control Only
- Color Consistency within 2 MacAdam Ellipse
- Power on Board
- 80° Vertical Rotation
- CCT: 2700K, 3000K, 3500K, 4000K
- 240 lm/LF @4000K
- 60 lm/W @4000K
- CRI: 80+
- 120V Only, Line Voltage
- Maximum Wattage: 4W/LF
- Indoor
- UL1598 & UL153
- Available Lengths: 6", 12", 48"
- Maximum Run Length: 90'
- Accessories include: Frosted Lens, Louver, Rocker Switch
- 5 Year Warranty

Model Number: SCIS



NEW



EcoSpec®

LINEAR INT HIGH CRI: 90+

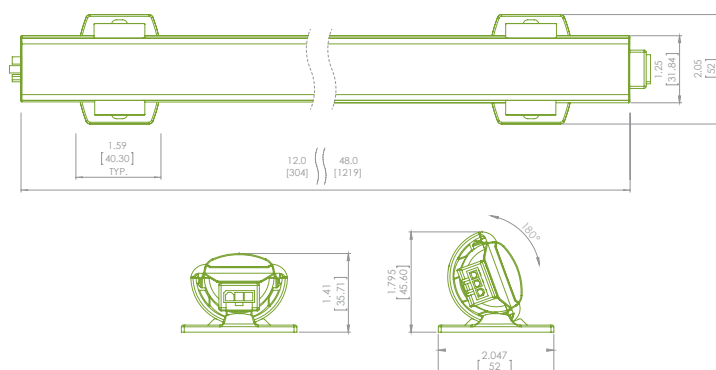
LINEAR INT HIGH CRI: 90+ LOW POWER

The EcoSpec® Linear INT series is now also available with a 90+ CRI rating. Color Rendering Index (CRI) is a measure describing a light source's ability to represent various object colors as compared to a natural light source, such as daylight or incandescent. CRI is calculated from the differences in the chromaticities of eight CIE standard color samples (CIE 1995) when illuminated by a light source and by a reference illuminant of the same correlated color temperature (CCT); the smaller the average difference in chromaticities, the higher the CRI.*

Light sources with a high CRI are recommended in color-critical applications such as retail, art galleries and grocery displays, where lighting is used to enhance the appearance of merchandise.

- CRI: 90+
- Patent-pending Dimming Technology: Dimmable Down to Zero
- Color Consistency within 2 Step MacAdam Ellipse
- Power on Board
- 180° Vertical Rotation with Integral Adjustable Bracket
- CCT: 2700K, 3000K, 3500K, 4000K
- 248 lm/LF @4000K (Low Power 168 lm/LF @4000K)
- 59.3 lm/w @4000K (Low Power 63.6 lm/w @4000K)
- 120V, 220V, 277V
- Maximum Wattage Options: Low Power 3W/LF, Standard Power 5W/LF
- Available Lengths: 12", 48"
- Maximum Run Length: 140' @120V and 200' @277V
- Frosted Lens Accessory
- ENERGY STAR® Qualified
- 5 Year Warranty

Model Number: LCISH, LCILH



*Source: Rensselaer Polytechnic Institute; NLPPI.

Final specs may vary. Visit ecosenselighting.com for updated product information.



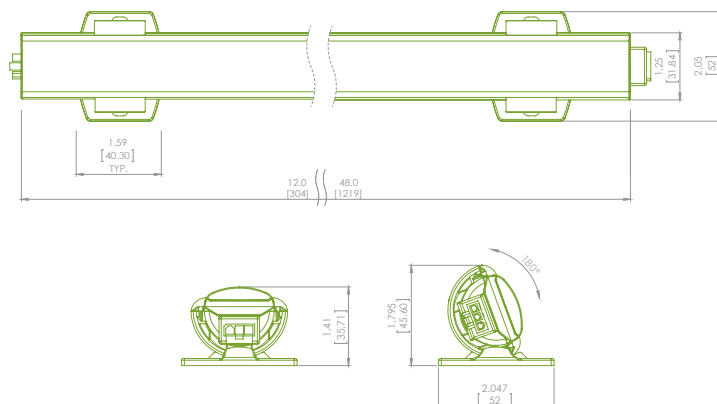
EcoSpec®

LINEAR INT LINEAR INT LOW POWER

EcoSpec® Linear INT and Linear INT Low Power are designed with slim profiles, making them the smallest and best-selling dimmable linear cove luminaire in our product line. The integral brackets with 180° vertical rotation adjustability provide versatility making these luminaires ideally suited for interior architectural, hospitality, retail, exhibit, and display applications.

- Patent-pending Dimming Technology: Dimmable Down to Zero
- Color Consistency within 2 McAdam Ellipse
- Power on Board
- 180° Vertical Rotation with Integral Bracket
- CCT: 2700K, 3000K, 3500K, 4000K
- 306 lm/LF @4000K (Low Power 182 lm/LF @4000K)
- 69.9 lm/w @4000K (Low Power 68.4 lm/w @4000K)
- CRI: 80+
- 120V, 220V, 277V
- Maximum Run Length 140 @120V, 200 @277V
- Frosted Lens Accessory
- Maximum Wattage Options: Low Power 3W/LF, Standard Power 5W/LF
- ENERGY STAR® Qualified
- 5 Year Warranty

Model Number: LCIS, LCIL





QELA – DOHAR, QATAR
LIGHTING DESIGN: dpa lighting design
INTERIOR DESIGN: UXUS
PHOTOGRAPHER: Adrian Haddad
PRODUCTS: EcoSpec® Linear HP INT
EcoSpec® Linear HP INT Wall Wash

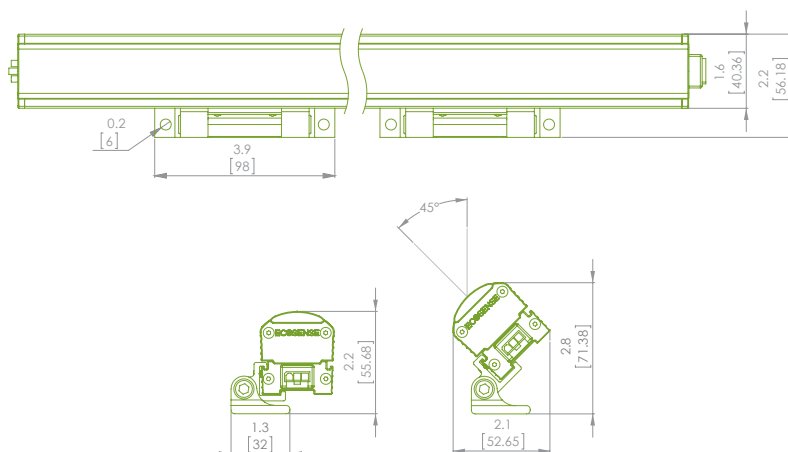
EcoSpec®

LINEAR HP INT LINEAR HP INT LOW POWER

EcoSpec® Linear HP INT and Linear HP INT Low Power are high performance luminaires that deliver more lumens for larger cove applications, dome ceilings or retail displays. In addition, the reduced wattage version at only 8 watts per linear foot allows for a wider range of commercial applications.

- Patent-pending Dimming Technology: Dimmable Down to Zero
- Color Consistency within 2 McAdam Ellipse
- Power on Board
- 180° Vertical Rotation with Adjustable Bracket
- 120° Beam Angle
- CCT: 2700K, 3000K, 3500K, 4000K
- 744 lm/LF @4000K (Low Power 569 lm/LF @4000K)
- 81.6 lm/w @4000K (Low Power 85.4 lm/w @4000K)
- CRI: 80+
- 120V, 220V, 277V
- Maximum Run Length: 50' @120V and 105' @277V
- Frosted Lens Accessory
- Maximum Wattage Options: Low Power 8W/LF, Standard Power 10W/LF
- ENERGY STAR® Qualified
- 5 Year Warranty

Model number: HPIS, HPIL



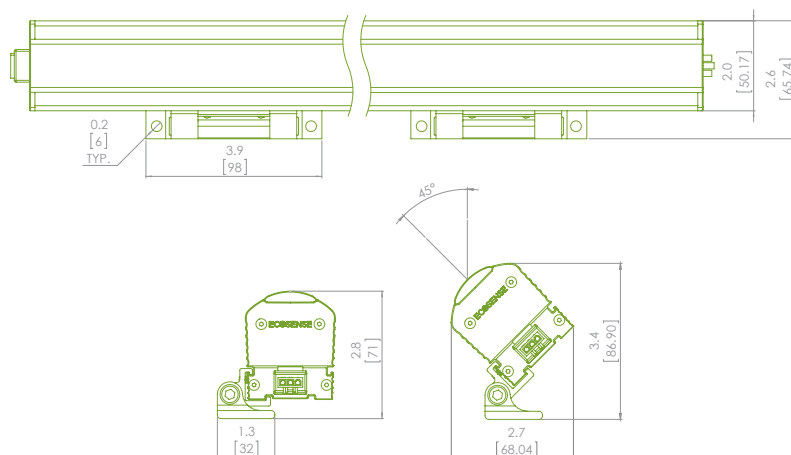
EcoSpec®

LINEAR HP INT WW LINEAR HP INT WW LOW POWER

EcoSpec® Linear HP INT WW and Linear HP INT WW Low Power are the brightest interior luminaires in the product family boasting 909 lumens per foot. These luminaires are available in a full range of beam angles including narrow, medium, wide and ellipsoidal for any wall grazing, backlighting or ceiling application.

- Patent-pending Dimming Technology: Dimmable Down to Zero
- Color Consistency within 2 McAdam Ellipse
- Power on Board
- 180° Vertical Rotation with Adjustable Bracket
- Available in 6° x 6°, 6° x 15°, 10° x 60°, 17° x 35°, 30° x 60° and 60° x 60° Beam Angles
- CCT: 2700K, 3000K, 3500K, 4000K
- 909 lm/LF @4000K 6° x 6° (Low Power 653 lm/LF @4000K)
- 78.5 lm/w @4000K 6° x 6° (Low Power 87.1 lm/w @4000K)
- CRI: 80+
- 120V, 220V, 277V
- Maximum Run Length: 50' @120V and 115' @277V
- Maximum Wattage Options: Low Power 8W/LF, Standard Power 12W/LF
- ENERGY STAR® Qualified
- 5 Year Warranty

Model number: WWIS, WWIL



NEW





BMW SHOWROOM - PARIS, FRANCE
LIGHTING DESIGN: Mindseye Architectural Lighting Design
AWARD: Lighting Design Award 2013
PRODUCTS: EcoSpec® Linear HP INT Wall Wash

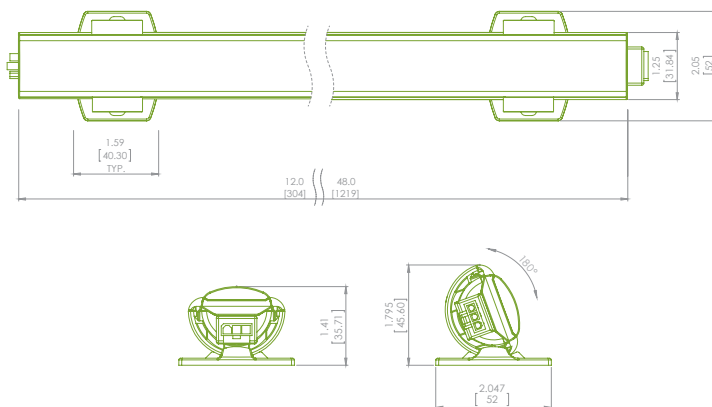
EcoSpec®

LINEAR WARM COVE SERIES (LCI, HPI & WWI)

All the benefits of the EcoSpec® Linear Series are now available in warmer color temperatures with our Warm Cove Series. Color Temperatures of 2300K and 2500K are created using an integral warming lens and are ideal for those spaces where a soft glow and warm atmosphere is desired. Smooth dimming down to zero output allows designers to have fun with this luminaire, especially in intimate spaces where a warm color will complement the environment such as hospitality, residential and architectural.

- Patent-pending Dimming Technology: Dimmable Down to Zero
- Power on Board
- CCT: 2300K, 2500K
- Linear INT Warm Cove (LCIS):
 - 187 lm/LF; Efficacy 43.5 lm/W @2300K
 - Maximum Wattage: 5W/LF
 - Maximum Run Length: 100' @120V and 200' @277V
- Linear HP INT (HPIS):
 - 513 lm/LF; Efficacy 56.9 lm/W @2300K
 - Maximum Wattage: 10W/LF
 - Maximum Run Length: 50' @120V and 105' @277V
- Linear HP INT WW (WWIS):
 - 633 lm/LF ; Efficacy 60 lm/W @2300K (6° x 6°)
 - Maximum Wattage: 12W/LF
 - Maximum Run Length: 50' @120V and 115' @277V
- 120V, 220V, 277V
- 5 Year Warranty
- Also available in Low Power options. See website for details.

Model Number: LCI, HPI, WWI



(Linear INT Warm Cove shown here. See website for HPI Warm Cove and WWI Warm Cove.)

Final specs may vary. Visit ecosenselighting.com for updated product information"



HEDONISM WINES - LONDON, ENGLAND
LIGHTING DESIGN: Speirs + Major
INTERIOR DESIGN: Universal Design Studio
SUPPLIER: Architainment Lighting
PRODUCTS: EcoSpec® Linear HP INT Wall Wash



816 CONGRESS - AUSTIN, TX

LIGHTING DESIGN: dwg.

LANDSCAPE ARCHITECT: dwg.

AWARD:

PRODUCTS:

P.I.A. Award 2014 - Best Use of White Light

EcoSpec® Linear HP EXT Wall Wash

LINEAR HP EXT
LINEAR HP EXT LOW POWER

NEW

-
- A vertical strip of a document, possibly a page from a book or a folder, with a yellow 'NEW' label at the top. The strip is white with a black border and contains a series of small, circular, gold-colored marks or stamps arranged vertically. The marks are slightly blurred and appear to be part of a larger, repeating pattern. The strip is shown at an angle, giving it a three-dimensional appearance.

Technical drawing of the 1000 Series Aluminum Extrusion, showing dimensions in inches and millimeters.

Top View Dimensions:

- Overall Length: 48.0 [1219]
- Section Length: 12.0 [304]
- End Flange Width: 1.93 [48.94]
- End Flange Thickness: 2.58 [65.48]
- End Flange Hole Diameter: 0.2 [6]
- End Flange Hole Spacing: 3.86 [98] TYP.

Side View Dimensions:

- Angle: 45°
- Height: 3.28 [83.17]

Bottom View Dimensions:

- Width: 1.3 [32]
- Height: 2.34 [59.43]

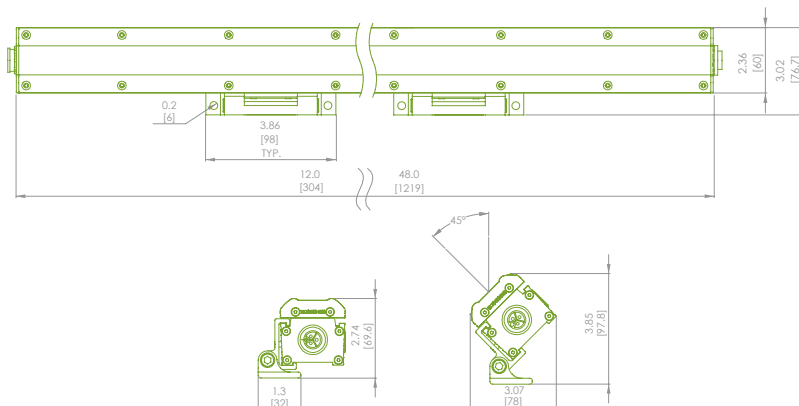
EcoSpec®

LINEAR HP EXT WW LINEAR HP EXT WW LOW POWER LINEAR HP EXT WW ASHRAE

The brightest member of our exterior linear family, the NEW EcoSpec® Linear HP EXT Wall Wash has an impressive array of narrow, medium, wide and ellipsoidal beam angles that provides brilliant results for exterior façade grazing, and wall washing applications. This product series features the unique GORE® Vent that protects the internal system from moisture and improves the overall lifetime of the fixture. The new glass lens provides better protection against harsh environments and chemicals. EcoSpec® Linear HP WW is now available in reduced wattage option including a 5W option that is ideal for projects with strict energy consumption requirements such as LEED and ASHRAE.

- Color Consistency within 2 MacAdam Ellipse
- Power on Board
- 180 degree rotation with Adjustable Bracket
- Available in 6° x 6°, 6° x 15°, 10° x 60°, 17° x 35°, 30° x 60° and 60° x 60° Beam Angles
- CCT: 2700K, 3000K, 3500K, 4000K
- 879 lm/LF @4000K
- 79.1 lm/w @4000K
- CRI: 80+
- IP66, UL Wet Location
- 120V, 220V, 277V
- Maximum Wattage Options:
 - Standard Power 12W/LF
 - Low Power 8W/LF
 - ASHRAE 5W/LF
- Featuring GORE® Vent for moisture control
- Maximum Run Length: 55' @120V and 125' @277V
- 5 Year Warranty

Model Number: WWES, WWEL, WWEA



NEW





LONG BEACH COURTHOUSE – LONG BEACH, CA, USA

LIGHTING DESIGN: Horton Lees Brogden Lighting Design

SUPPLIER: Performance Lighting Systems

PRODUCTS: EcoSpec® Linear INT, EcoSpec® Linear HP INT

EcoSpec® Linear HP INT Wall Wash, EcoSpec® Linear EXT Wall Wash

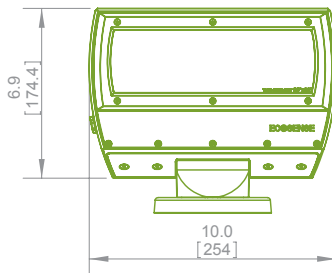
EcoSpec®

FLOODLIGHT WASH

The NEW EcoSpec® Floodlight Wash is a very powerful and versatile indoor/outdoor rated luminaire for any architectural application. This floodlight is highly efficient and features a GORE® Vent to protect the internal system from moisture, prolonging the product's life. Field-interchangeable beam spread lens are now easier than ever to install using common Philips-head screws. Lens are available in various beam spreads including narrow, medium, wide and ellipsoidal distributions.

- Dimmable with Incandescent, TRIAC and ELV dimmers
- Color Consistency within 2 McAdam Ellipse
- Power on Board
- 190° Vertical Aiming
- Beam Spread Options: 11°, 20°, 30°, 40°, 60°, 80°, 10° x 60° and 30° x 60°
- CCT: 2700K, 3000K, 3500K, 4000K
- 2617 lm @4000K
- 67 lm/w @4000K
- CRI: 80+
- IP66, UL Wet Location
- 120V, 220V, 277V
- Maximum Wattage: 45W
- GORE® Vent for moisture control
- 5 Year Warranty

Model number: WSH-M



NEW





LUX
Awards 2013
WINNER

SCIENCE MUSEUM - LONDON, UK
DESIGNER: dha Design
SUPPLIER: Architainment
PRODUCTS: EcoSpec® Linear HP EXT Wall Wash
EcoSpec® Floodlight Wash
AWARD: LUX Award 2013

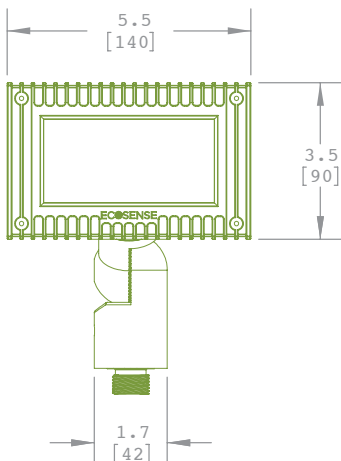
EcoSpec[®]

MINI FLOOD

EcoSpec Mini Flood is an indoor/outdoor, flexible luminaire with neutral white and warm white color temperatures. The compact size and beam angles of 45° and 90° offer flexibility for a wide variety of projects and bring focus and drama to any landscape or architectural point of interest. This luminaire is ideal for lighting pathways, stairways, halls and entrances.

- Non-Dimming
- Power on Board
- 180° Vertical Aiming
- Beam Spread Options: 45° and 90°
- CCT: 2700K, 3500K
- 491 lm (45°) / 565 lm (90°) @ 3500K
- 43 lm/w (45°) / 50 lm/w (90°) @ 3500K
- CRI: 80+
- IP66, UL Wet Location
- 120V, 220V
- Maximum Wattage: 12W
- 5 Year Warranty

Model number: ES06-MF



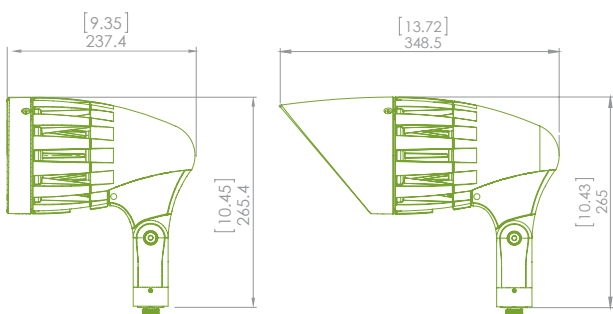
EcoSpec®

FLOODLIGHT BULLET

The EcoSpec® Floodlight Bullet is an award winning, highly efficient and powerful indoor/outdoor rated luminaire. It features a GORE® Vent to protect the internal system from moisture and prolong product life. Field interchangeable snoots and spread lens make it very simple to achieve narrow, medium, wide and ellipsoidal distributions. This luminaire, with 150° vertical aiming, is ideal for any architectural or landscape application.

- Dimmable with Incandescent, TRIAC and ELV dimmers
- Color Consistency within 2 McAdam Ellipse
- Power on Board
- 150° Vertical Aiming
- Available in 11° x 11°, 20° x 20°, 30° x 30°, 40° x 40°, 60° x 60°, 80° x 80°, 10° x 60° and 30° x 60° Beam Angles
- CCT: 2700K, 3000K, 3500K, 4000K
- CR: 80+
- IP66, UL Wet Location
- 2048 lm @4000K
- 72 lm/w @4000K
- 120V, 220V, 277V
- Maximum Wattage: 30W
- 45° Half Snoot Accessory
- GORE® Vent for moisture control
- ENERGY STAR® Qualified
- 5 Year Warranty

Model number: BUL-L





BLOOMINGDALE'S, NEWPORT BEACH, CA, USA
LIGHTING DESIGN: First Circle Design LLC
SUPPLIER: Performance Lighting Systems
PRODUCTS: EcoSpec® Linear HP EXT
EcoSpec® Linear HP EXT Wall
EcoSpec® Floodlight Bullet Mini

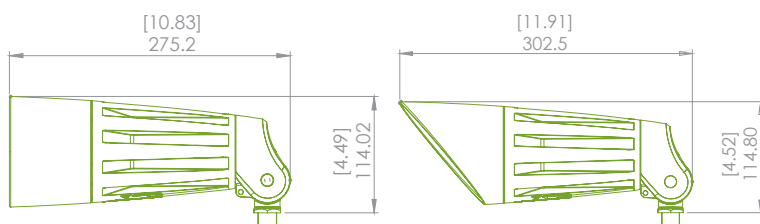
EcoSpec®

FLOODLIGHT BULLET MINI

The EcoSpec® Floodlight Bullet Mini is award winning and the most efficient indoor/outdoor rated luminaire in our product family. It features a GORE® Vent to protect the internal system from moisture and prolong product life. Field interchangeable snoots and spread lens make it very simple to achieve narrow, medium, wide and ellipsoidal distributions. This small and robust luminaire, with 130° vertical aiming, is ideal for any architectural or landscape application.

- Dimmable with Incandescent, TRIAC and ELV dimmers
- Color Consistency within 2 McAdam Ellipse
- Power on Board
- 130° Vertical Aiming
- Available in 11° x 11°, 20° x 20°, 30° x 30°, 40° x 40°, 60° x 60°, 80° x 80°, 30° x 60° and 10° x 60° Beam Angles
- CCT: 2700K, 3000K, 3500K, 4000K
- CR: 80+
- IP66, UL Wet Location
- 920 lm @4000
- 81 lm/w @4000K
- 120V, 220V, 277V
- Maximum Wattage: 12W
- Full and 45° Half Snoot Accessories
- GORE® Vent for moisture control and longer life
- ENERGY STAR® Qualified
- 5 Year Warranty

Model number: BUL-S

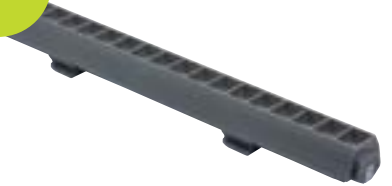


EcoSpec® & Slim Cove Ac

SLIM COVE INT LOUVER

The Slim Cove Louver maintains maximum light output while providing glare and sight line reductions. Each optic is centered in its own cell maximizing light output and providing beautiful results. Available in 6" and 12" lengths.

NEW



SLIM COVE INT SWITCHED JUNCTION BOX

The Slim Cove Switched Junction Box allows you to run conduit directly to the box, while the fixture connects directly to the other side. This solution provides on/off switching and is perfect for hard wired applications.

NEW



SLIM COVE INT INLINE SWITCH

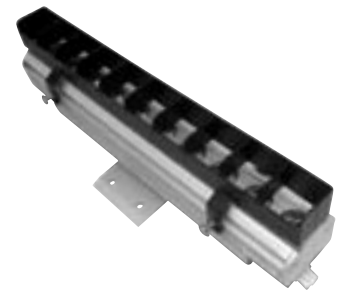
The Slim Cove Inline Switch is a simple on/off switch for portable applications of the Slim Cove product. Ideal where conduit connection is not available or necessary.

NEW



LINEAR HP INT WALL WASH SYMMETRICAL/ASYMMETRICAL LOUVER

The Symmetrical and Asymmetrical Louver delivers glare control and sight line reduction for your applications. The sheet metal is formed into lengths that match the luminaire and mounts directly to it for easy installation.



LINEAR WALL MOUNT SYSTEM

One of the most versatile accessories in our line, the EcoSpec® Linear Wall Mount System allows linear mounting in troublesome areas, creating the desired outcome and eliminating the need to install a shelf or cover.



cessories

FROSTED LENS

The Frosted Lens accessory is a snap-on diffused lens that provides a soft effect. It snaps easily onto the Slim Cove INT, Linear INT or Linear HP INT products, either before or after installation, for quick in-field design changes. The lens is ideal for applications where the fixture is visible and LED glare needs to be reduced.

NEW



LINEAR DIMMING CONTROL MODULE

The EcoSpec® Linear Dimming Control Module takes a 0-10V dimming signal and a fixed line voltage input and converts it to an ELV dimmed output for up to 1000W with a 277V load for up to 450W on a 120V load and 1000W with a 277V load. One LDCM can be used per run up to the maximum wattage.

NEW



LINEAR MASKING PLATE

The EcoSpec® Linear Masking Plate is the best solution for hiding fixtures and reducing sight lines. They are available for interior and exterior Linear HP Wall Wash fixtures.



FLOODLIGHT WASH WALL MOUNT ARM

The Wall Mount Arm allows for cantilever mounting of the Floodlight Wash in areas with difficult locations, or that require setbacks, ensuring you achieve stunning results. Available in 6", 12", 18" and 24" lengths.



FLOODLIGHT WASH SQUARE LOUVER

The EcoSpec® Floodlight Wash Square Louver maintains maximum light output while providing glare and sight line reductions. The Square Louver also provides 45° visual cutoff while each individual optic is centered in its own cell maximizing light output and providing beautiful results.



Visit www.ecosenselighting.com for a complete list of accessories including Snoots, Landscape Stakes, Tree Belts, Spread Lenses, and more.

Slim Cove & EcoSpec® Lu

		MODEL NUMBER	OUTDOOR	LENGTHS	BEAM ANGLES	CONTROL OPTIONS
Slim Cove	Slim Cove INT	SCIS		.5', 1', 4'	120°	Non-Dim
Linear INT Series	Linear INT 90 CRI Low Power	LCILH		1', 4'	120°	ELV; 0-10V*
	Linear INT 90 CRI	LCISH		1', 4'	120°	ELV; 0-10V*
	Linear INT Low Power	LCIL		1', 4'	120°	ELV; 0-10V*
	Linear INT	LCIS		1', 4'	120°	ELV; 0-10V*
	Linear INT Warm Cove Low Power	LCIL		1', 4'	120°	ELV; 0-10V*
	Linear INT Warm Cove	LCIS		1', 4'	120°	ELV; 0-10V*
Linear HP INT Series	Linear HP INT Low Power	HPIL		1', 4'	120°	ELV; 0-10V*
	Linear HP INT	HPIS		1', 4'	120°	ELV; 0-10V*
	Linear HP INT Warm Cove Low Power	HPIL		1', 4'	120°	ELV; 0-10V*
	Linear HP INT Warm Cove	HPIS		1', 4'	120°	ELV; 0-10V*
Linear HP INT WW Series	Linear HP INT WW Low Power	WWIL		1', 4'	6° x 6°, 6° x 15° 10° x 60°, 17° x 35° 30° x 60°, 60° x 60°	ELV; 0-10V*
	Linear HP INT WW	WWIS		1', 4'	6° x 6°, 6° x 15° 10° x 60°, 17° x 35° 30° x 60°, 60° x 60°	ELV; 0-10V*
	Linear HP INT WW Warm Cove Low Power	WWIL		1', 4'	6° x 6°	ELV; 0-10V*
	Linear HP INT WW Warm Cove	WWIS		1', 4'	6° x 6°	ELV; 0-10V*
Linear HP EXT Series	Linear HP EXT Low Power	HPEL	•	1', 4'	120°	ELV; 0-10V*
	Linear HP EXT	HPES	•	1', 4'	120°	ELV; 0-10V*
Linear EXT WW Series	Linear HP EXT WW ASHRAE	WWEA	•	1', 4'	6° x 6°, 6° x 15° 10° x 60°, 17° x 35° 30° x 60°, 60° x 60°	ELV; 0-10V*
	Linear HP EXT WW Low Power	WWEL	•	1', 4'	6° x 6°, 6° x 15° 10° x 60°, 17° x 35° 30° x 60°, 60° x 60°	ELV; 0-10V*
	Linear HP EXT WW	WWES	•	1', 4'	6° x 6°, 6° x 15° 10° x 60°, 17° x 35° 30° x 60°, 60° x 60°	ELV; 0-10V*
Floodlight Series	Floodlight Wash	WASH-M	•	10"	11° x 11°, 20° x 20° 30° x 30°, 40° x 40° 60° x 60°, 80° x 80° 30° x 60°, 10° x 60°	TRAIC / ELV, 0-10V*
	Mini Flood	ES06	•	5.5"	45° 90°	Non-Dim
	Floodlight Bullet	BUL-L	•	6" Diam.	11° x 11°, 20° x 20° 30° x 30°, 40° x 40° 60° x 60°, 80° x 80° 30° x 60°, 10° x 60°	TRAIC / ELV, 0-10V*
	Floodlight Bullet Mini	BUL-S	•	4" Diam.	11° x 11°, 20° x 20° 30° x 30°, 40° x 40° 60° x 60°, 80° x 80° 30° x 60°, 10° x 60°	TRAIC / ELV, 0-10V*

*0-10V Dimming is available using the EcoSpec® Linear Dimming Control Module

**Based on LM79 data and Typical Wattage

Product Specs may vary. Visit www.ecosenselighting.com for up to date product specification information.

All Products Available in 120V, 220V and 277V.

LUMENS @27K / @40K	MAXIMUM WATTAGE / LF	EFFICACY LM/W @4000K**	CCT	HOUSING COLORS	PAGE NUMBER
240 / 270	4W	77	2700K, 3000K, 3500K, 4000K	Grey Polycarbonate	8
146 / 168	3W	63.6	2700K, 3000K, 3500K, 4000K	Anodized Clear AL	9
227 / 248	5W	59.3	2700K, 3000K, 3500K, 4000K	Anodized Clear AL	9
150 / 182	3W	68.4	2700K, 3000K, 3500K, 4000K	Anodized Clear AL	11
223 / 306	5W	69.9	2700K, 3000K, 3500K, 4000K	Anodized Clear AL	11
125 @ 2300K	3W	47.8 @ 2300K	2300K, 2500K	Anodized Clear AL	16
187 @ 2300K	5W	43.5 @ 2300K	2300K, 2500K	Anodized Clear AL	16
500 / 569	8W	85.4	2700K, 3000K, 3500K, 4000K	Anodized Clear AL	13
639 / 744	10W	81.6	2700K, 3000K, 3500K, 4000K	Anodized Clear AL	13
398 @ 2300K	8W	57.2 @ 2300K	2300K, 2500K	Anodized Clear AL	16
513 @ 2300K	10W	57 @ 2300K	2300K, 2500K	Anodized Clear AL	16
567 / 653	8W	87.1	2700K, 3000K, 3500K, 4000K	Anodized Clear AL	14
822 / 909	12W	78.5	2700K, 3000K, 3500K, 4000K	Anodized Clear AL	14
473 @ 2300K	8W	63.5 @ 2300K	2300K, 2500K	Anodized Clear AL	16
633 @ 2300K	12W	60 @ 2300K	2300K, 2500K	Anodized Clear AL	16
	8W		2700K, 3000K, 3500K, 4000K	Anodized Clear AL	19
660 / 753	12W	60.2	2700K, 3000K, 3500K, 4000K	Anodized Clear AL	19
407 / 450	5W	90	2700K, 3000K, 3500K, 4000K	Anodized Clear AL	20
576 / 631	8W	84.1	2700K, 3000K, 3500K, 4000K	Anodized Clear AL	20
755 / 985	12W	57.9	2700K, 3000K, 3500K, 4000K	Anodized Clear AL	20
2321 / 2653	45W	66.6	2700K, 3000K, 3500K, 4000K	White, Black, Bronze	22
470/491 533/565	13W	49.6	2700K, 3500K	White, Black	24
1614 / 2048	30W	72	2700K, 3000K, 3500K, 4000K	White, Black, Bronze	25
746 / 920	12W	81	2700K, 3000K, 3500K, 4000K	White, Black, Bronze	27



At EcoSense we stand behind the quality of our products and want you to be completely satisfied. We offer a competitive 5 year warranty on all of our products. Our goal is to provide worry-free solutions, so you can focus on what you do best, creating beautiful illumination.

ECOSENSE®

CORPORATE HEADQUARTERS

EcoSense Lighting Inc
915 Wilshire Boulevard, Suite 2175
Los Angeles, CA 90017
PHONE: +1.310.496.6255
FAX: +1.310.496.6256
TOLL FREE 855.632.6736 / 855.6.ECOSEN

HONG KONG OFFICE

EcoSense Lighting Company Limited
10/F, Aitken Vanson Centre
61 Hoi Yuen Road
Kwun Tong, Kowloon
Hong Kong
PHONE +852.2304.0189
FAX +852.2304.0969



IALDLIRC



©2014 EcoSense Lighting Inc.
EcoSense, the EcoSense logo, and EcoSpec
are registered trademarks of EcoSense Lighting Inc.
BRO201405



BLOOMINGDALE'S, NEWPORT BEACH, CA, USA

LIGHTING DESIGN: First Circle Design LLC

SUPPLIER: Performance Lighting Systems

PRODUCTS:
EcoSpec® Linear HP EXT
EcoSpec® Linear HP EXT Wall Wash
EcoSpec® Floodlight Bullet Mini

