



2" LED Downlights and Adjustables

Energy-efficient, discreet aperture, high performance LED lighting



JUNO LIGHTING GROUP



2" LED IC-Rated Downlights and Adjustables... Big things come in small packages

The sophisticated aesthetics and smaller aperture of the Juno 2" LED downlights and adjustables offers the “designer-look” that perfectly complements many of today’s upscale residential and commercial interiors. These ultra-efficient fixtures produce over 600 lumens of brilliant white light, while consuming as little as 10 watts. Offered in round or square aperture, downlight or adjustable, and a wide variety of styles and finishes, Juno 2" LED fixtures are the perfect lighting solution for any décor.



Ultra-efficient LED lighting with extra style and flair

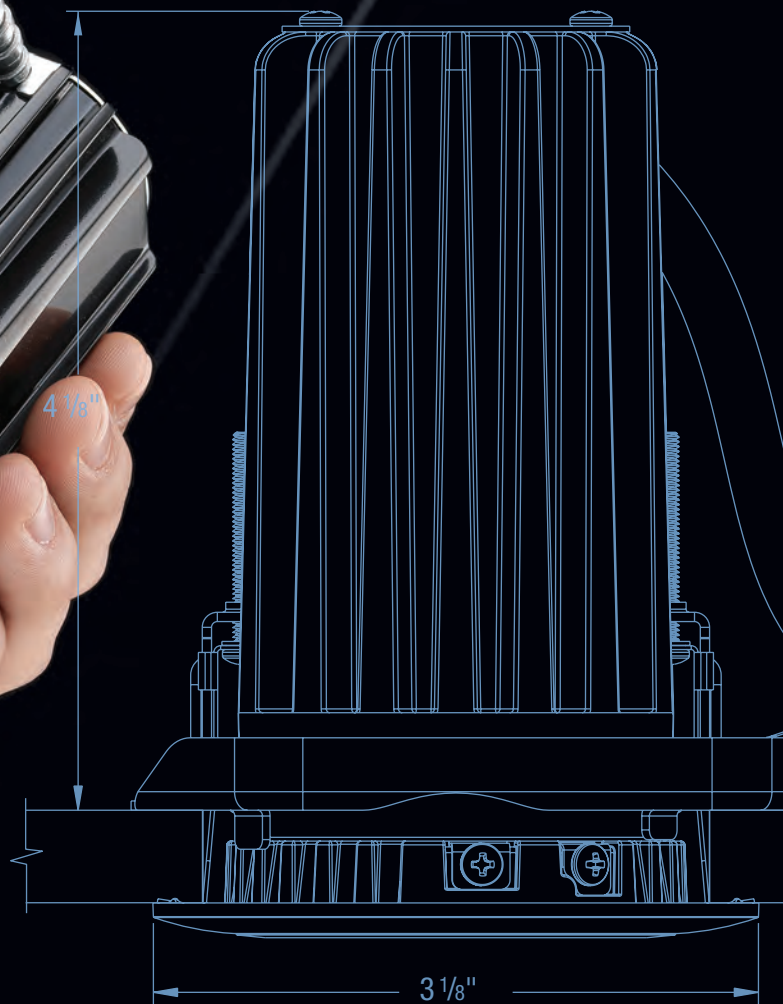
- Produces over 600 lumens of brilliant white light
- Very low profile form factor permits installation in a wide range of applications
- Wide range of trim styles and finishes available
- Approved for use in both insulated and non-insulated ceilings
- ENERGY STAR® Qualified

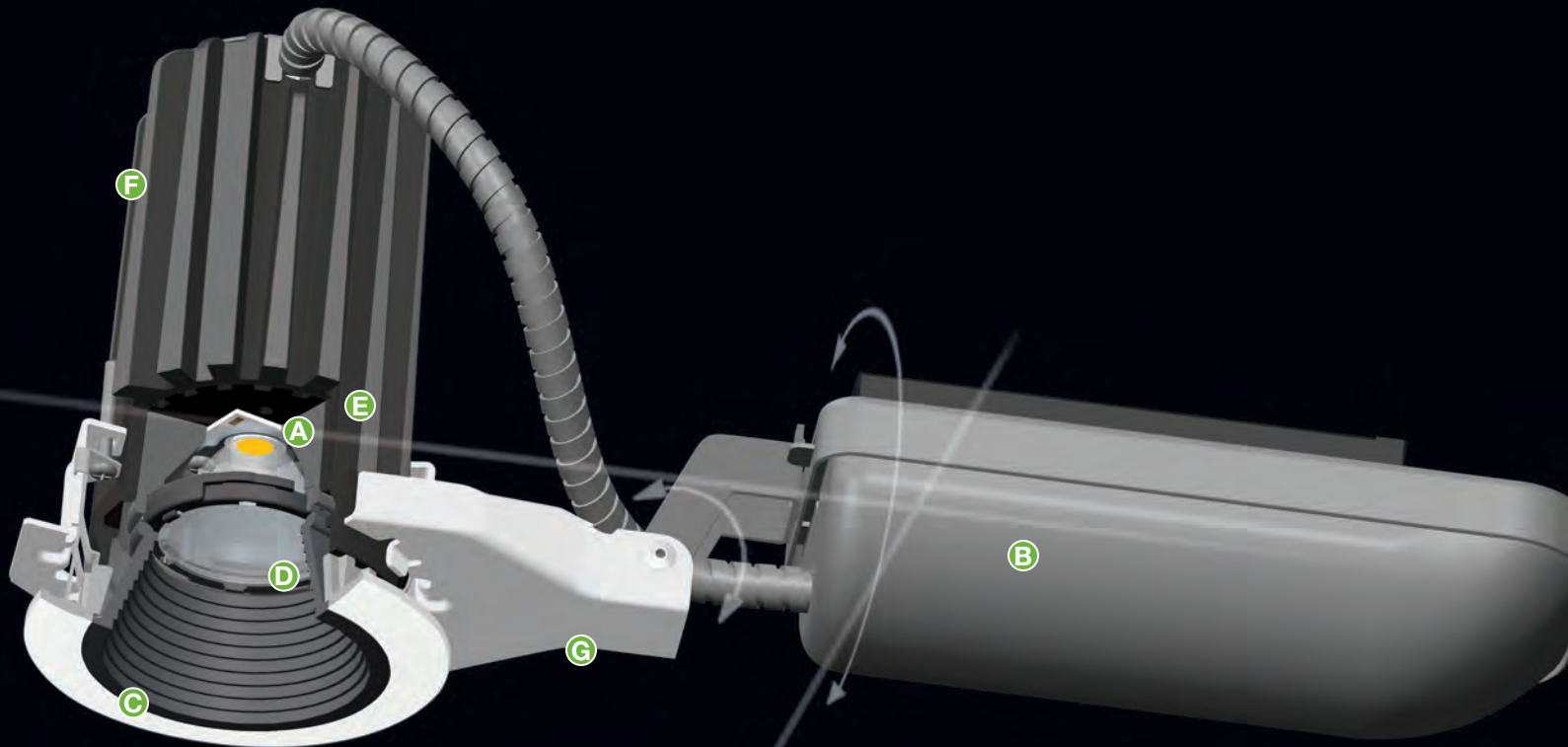




Ultra-efficient LED Lighting

Juno 2" LED downlights and adjustables feature the latest high lumen output LED array, binned to within 3-step MacAdam Ellipse, exceeding ENERGY STAR® requirements. They provide superior fixture-to-fixture color consistency and are available in color temperatures of 2700K, 3000K, 3500K, and 4100K with 80 CRI or 90 CRI minimum. Two dimmable LED drivers are available; one for 120-volt only operation compatible with most incandescent dimmers, the other for universal 120-277V operation compatible with most 0-10V protocol dimmers. Additionally, field-interchangeable optics are available to provide distributions ranging from 18° to 40°. Energy-efficient, stylish Juno 2" LED downlights and adjustables are the little something extra for today's residential and commercial lighting applications.





A. Advanced Light Engine: Advanced LED technology produces more than 600 lumens from as little as 10 watts input. LEDs are binned to within a 3-step MacAdam Ellipse for superior fixture to fixture color consistency. Color temperatures of 2700K, 3000K, 3500K and 4100K with 80 CRI or 90 CRI minimum.

B. LED Driver: Specify either the dedicated 120 volt driver compatible with incandescent, magnetic low voltage and ELV dimming or the universal 120V-277V driver with 0-10V dimming.

C. Downlight Trim: All metal trim is offered in cone and baffle styles. Round aperture downlight features shadow free knife edge trim ring to blend seamlessly into the ceiling.

Adjustable Trim (not shown): Die cast gimbal trim features 35° tilt adjustment. Round aperture adjustable features shadow free knife edge trim ring to blend seamlessly into the ceiling.

D. High Efficiency Optics: Three field interchangeable TIR optics available in 18°, 24° and 40° beam angles.

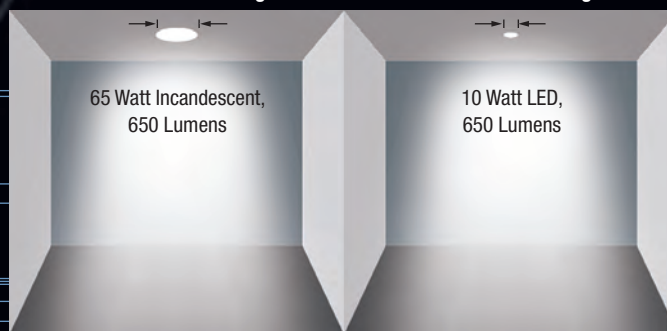
E. Superior Thermal Management: LED array is attached to die cast trim with integral heat sink to provide excellent heat transfer and ensure long life. At the end of their rated life, LEDs can be expected to produce 70% of their initial light output with no perceptible changes in color.

F. Low Profile Housing: Permits easy installation in a wide variety of applications and fits nicely within 2 x 6 ceiling joists for shallow applications.

G. Easy Installation: Fixture easily installs from below the ceiling through a small 2-5/8" ceiling cut out. Product ships with galvanized steel plaster frame that accommodates ceiling thicknesses from 1/2" to 1". New construction mounting frame with Real Nail 3° telescoping bar hangers to position fixture and locate wiring prior to ceiling installation is also available.

Traditional 6" Downlight

Juno 2" LED Downlight



Small aperture fixtures offering powerful illumination

Juno 2" LED downlights and adjustables deliver the same amount of bright illumination as Juno 6" LED downlights.



ENERGY STAR Qualified. 90CRI fixtures are certified to the high efficacy requirements of California T24. Meets energy code Air Leakage requirements per ASTM E283. Downlights are UL and cUL listed for wet locations.



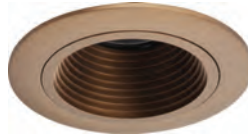
Juno 2" LED Round Downlights and Adjustables

Juno 2" LED round downlights and adjustables are offered in an extensive selection of trims. Downlights are available in cone and baffle styles, and downlights and adjustables are offered in white, black, satin nickel and brushed bronze with various combinations. You are certain to find the perfect fixture for any room in the home or office.

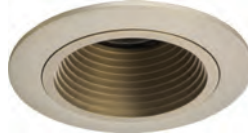
**2B Series
Downlight Baffle**



BBL: Black Baffle/ Black Trim



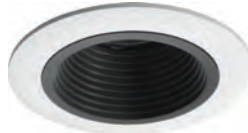
ZBZ: Brushed Bronze Baffle/
Brushed Bronze Trim



SSN: Satin Nickel Baffle/
Satin Nickel Trim



WWH: White Baffle/White Trim



BWH: Black Baffle/White Trim

**2C Series
Downlight Cone**



WZB: Wheat Haze Cone/
Brushed Bronze Trim



HZS: Haze Cone/
Satin Nickel Trim



CLW: Clear Cone /White Trim



WHW: White Cone/White Trim



HZW: Haze Cone/White Trim

**2A Series
Adjustable**



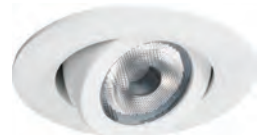
BL: Black



BZ: Brushed Bronze



SN: Satin Nickel



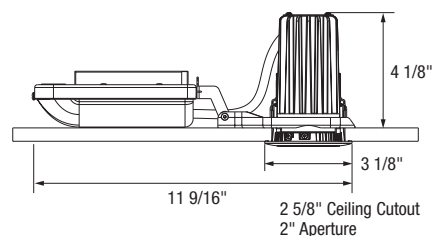
WH: White

2" LED Round Downlight



2B and 2C Series

2 inch aperture recessed downlight is IC rated for insulated or non-insulated applications. Luminaire produces over 600 lumens and is available with optical distributions ranging from 18° – 40°. Low profile form factor allows luminaire to fit in 2 x 6 construction. LED Light Engine provides exceptional fixture to fixture color consistency within a 3-step MacAdam ellipse. Air-Loc rated LED housings and UL Listed for wet location.



Example: 2B-927N1-WWH

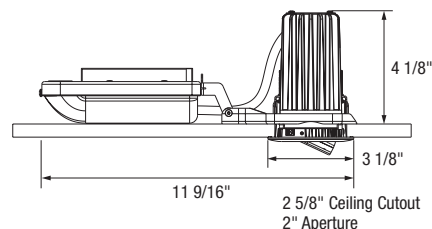
Series	CRI/Color Temperature		Beam Optics	Drivers	Finish	
2B Downlight Baffle	827 2700K, 80CRI	927 2700K, 90CRI	S 18° Spot	1 Dedicated 120V Only (Forward Phase + ELV Dimmable)	Downlight Baffle WWH White Baffle, White Trim Ring	Downlight Cone WHW White Cone, White Trim Ring
2C Downlight Cone	830 3000K, 80CRI	930 3000K, 90CRI	N 24° Narrow Flood	U Universal Voltage 120-277V (0-10V Dimmable)	BBL Black Baffle, Black Trim Ring	CLW Clear Cone, White Trim Ring
	835 3500K, 80CRI	935 3500K, 90CRI	F 40° Flood		BWH Black Baffle, White Trim Ring	HZW Haze Cone, White Trim Ring
	841 4100K, 80CRI	941 4100K, 90CRI			ZBZ Bronze Baffle, Bronze Trim Ring	HZS Haze Cone, Satin Nickel Trim Ring
					SSN Satin Nickel Baffle, Satin Nickel Trim Ring	WZB Wheat Haze Cone, Bronze Trim Ring

2" LED Round Adjustable



2A Series

2 inch aperture recessed adjustable is IC rated for insulated or non-insulated applications. Luminaire produces over 600 lumens and is available with optical distributions ranging from 18° – 40°. Low profile form factor allows luminaire to fit in 2 x 6 construction. LED Light Engine provides exceptional fixture to fixture color consistency within a 3-step MacAdam ellipse. Air-Loc rated LED housings and UL Listed for damp location.

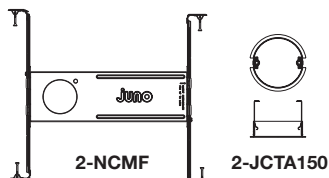


Example: 2A-927N1-WH

Series	CRI/Color Temperature		Beam Optics	Drivers	Finish
2A	827 2700K, 80CRI	927 2700K, 90CRI	S 18° Spot	1 Dedicated 120V Only (Forward Phase + ELV Dimmable)	Downlight Reflector Finish WH White
	830 3000K, 80CRI	930 3000K, 90CRI	N 24° Narrow Flood	U Universal Voltage 120-277V (0-10V Dimmable)	BL Black
	835 3500K, 80CRI	935 3500K, 90CRI	F 40° Flood		SN Satin Nickel
	841 4100K, 80CRI	941 4100K, 90CRI			BZ Bronze

Accessories

- 2-NCMF** New Construction Mounting Frame with Real Nail® 3 bar hangers
- 2-JCTA150** Thick Ceiling adapter for 1" - 1½" thick ceiling
- LEDOPTIC2-S** 18° Spot Optic
- LEDOPTIC2-N** 24° Narrow Flood Optic
- LEDOPTIC2-F** 40° Flood Optic



Regulatory Listings and Standards

- UL and C-UL Listed
- Listed for Direct Contact with Insulation
- ENERGY STAR® Qualified
- RoHS Compliant
- Juno LED Downlights are certified to meet the high efficacy requirements of California Title 24
- Air-Loc® rated to minimize air leakage and promote building energy efficiency.



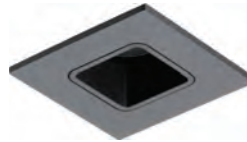
Qualified Dimmers

Choice of dimmable drivers includes dedicated 120 volt driver compatible with the use of most incandescent, magnetic low voltage and electronic low voltage dimmers, or universal voltage driver, dimmable with the use of most 0-10V protocol dimmers. Refer to the spec sheet on www.junolightinggroup.com for a list of compatible dimmers.

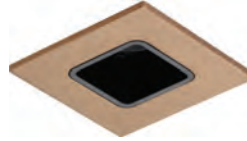
Juno 2" LED Square Downlights and Adjustables

Perfect for today's upscale interiors, Juno 2" LED square downlights and adjustables are offered with a wide selection of trim finishes. Downlights and adjustables are offered in white, black, satin nickel and brushed bronze with various combinations.

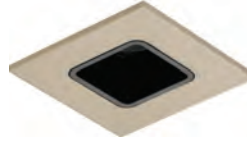
2SQ Series Downlight Reflectors



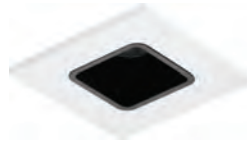
BBL: Black Reflector/
Black Trim



BBZ: Black Reflector/
Brushed Bronze Trim



BSN: Black Reflector/
Satin Nickel Trim

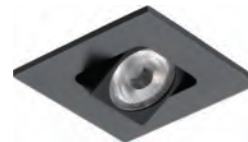


BWH: Black Reflector/
White Trim



WWH: White Reflector/
White Trim

2SQA Series Adjustable



BL: Black



BZ: Brushed Bronze



SN: Satin Nickel



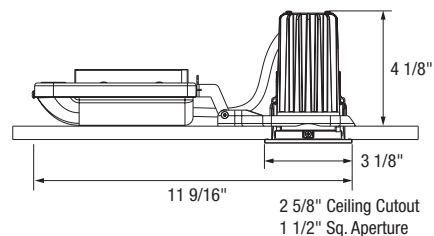
WH: White

2" LED Square Downlight



2SQ Series

2 inch square aperture recessed LED downlight is IC rated for insulated or non-insulated applications. Luminaire produces over 600 lumens and is available with optical distributions ranging from 18° – 40°. Low profile form factor allows luminaire to fit in 2 x 6 construction. LED Light Engine provides exceptional fixture to fixture color consistency within a 3-step MacAdam ellipse. Air-Loc rated LED housings and UL Listed for wet location.



Example: 2SQ-927S1-WWH

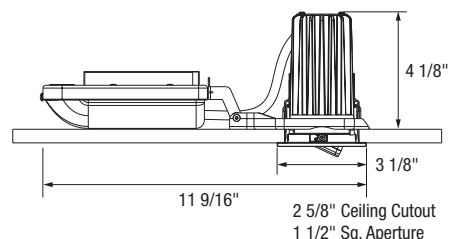
Series	CRI/Color Temperature	Beam Optics	Drivers	Finish
2SQ	827 2700K, 80CRI, 927 2700K, 90CRI 830 3000K, 80CRI, 930 3000K, 90CRI 835 3500K, 80CRI, 935 3500K, 90CRI 841 4100K, 80CRI, 941 4100K, 90CRI	S 18° Spot N 24° Narrow Flood" F 40° Flood	1 Dedicated 120V Only (Forward Phase + ELV Dimmable) U Universal Voltage 120-277V (0-10V Dimmable)	Downlight Reflector Finish WWH White, White Trim Ring BBL Black, Black Trim Ring BWH Black, White Trim Ring BBZ Black, Bronze Trim Ring BSN Black, Satin Nickel Trim Ring

2" LED Square Adjustable



2SQA Series

2 inch square aperture recessed LED adjustable is IC rated for insulated or non-insulated applications. Luminaire produces over 600 lumens and is available with optical distributions ranging from 18° – 40°. Low profile form factor allows luminaire to fit in 2 x 6 construction. LED Light Engine provides exceptional fixture to fixture color consistency within a 3-step MacAdam ellipse. Air-Loc rated LED housings and UL Listed for damp location.

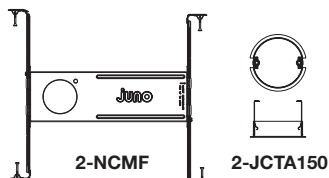


Example: 2SQ-927S1-WWH

Series	CRI/Color Temperature	Beam Optics	Drivers	Finish
2SQA	827 2700K, 80CRI, 927 2700K, 90CRI 830 3000K, 80CRI, 930 3000K, 90CRI 835 3500K, 80CRI, 935 3500K, 90CRI 841 4100K, 80CRI, 941 4100K, 90CRI	S 18° Spot N 24° Narrow Flood F 40° Flood	1 Dedicated 120V Only (Forward Phase + ELV Dimmable) U Universal Voltage 120-277V (0-10V Dimmable)	Downlight Reflector Finish WH White BL Black BZ Bronze SN Satin Nickel

Accessories

- 2-NCMF** New Construction Mounting Frame with Real Nail® 3 bar hangers
- 2-JCTA150** Thick Ceiling adapter for 1" - 1½" thick ceiling
- LEDOPTIC2-S** 18° Spot Optic
- LEDOPTIC2-N** 24° Narrow Flood Optic
- LEDOPTIC2-F** 40° Flood Optic



Regulatory Listings and Standards

- UL and C-UL Listed
- Listed for Direct Contact with Insulation
- ENERGY STAR® Qualified
- RoHS Compliant
- Juno LED Downlights are certified to meet the high efficacy requirements of California Title 24
- Air-Loc® rated to minimize air leakage and promote building energy efficiency.



Qualified Dimmers

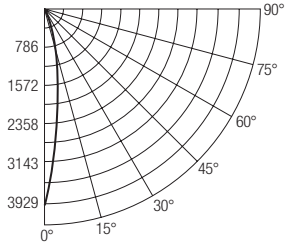
Choice of dimmable drivers includes dedicated 120 volt driver compatible with the use of most incandescent, magnetic low voltage and electronic low voltage dimmers, or universal voltage driver, dimmable with the use of most 0-10V protocol dimmers. Refer to the spec sheet on www.junolightinggroup.com for a list of compatible dimmers.

2" LED Round Downlight Photometric Information

Downlight with Spot Optic

Photometric Report

Test Report #: PT01142303R
Catalog No: 2B-835S1-WWH
 80 CRI, 3500K LED White Baffle with Spot Optic
Luminaire Spacing Criterion: 0.30
Luminaire LPW: 65



Candlepower Distribution (Candelas)

Degrees Vertical	0°
0	3929
5	3055
15	917
25	222
35	38
45	12
55	8
65	5
75	3
85	1
90	0

Average Initial Footcandles

Multiple Units (Square Array, 60'x60' room)
 Ceiling 80%, Wall 50%, Floor 20%

Spacing	RCR1	RCR3	RCR5
4'	46	42	38
5'	29	27	25
6'	20	19	17
7'	17	15	14
8'	13	12	11
9'	10	9	8
10'	7	7	6

Zonal Lumen Summary

Zone	Lumens	%Lamp	%Fixture
0-30°	603	N/A	92.1
0-40°	628	N/A	96.0
0-60°	646	N/A	98.7
0-90°	655	N/A	100.0

Initial Footcandles

(One Unit, 10.1W, 17° Beam)

Distance to Illuminated Plane (Feet)	Footcandles Beam Center	Beam Diameter
4'	245.6	1.2
6'	109.1	1.8
8'	61.4	2.4
10'	39.3	3.0
12'	27.3	3.6

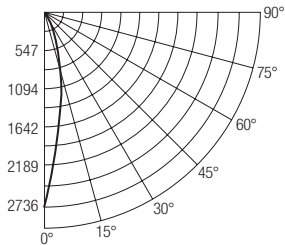
Luminance (Average cd/m²)

Degrees	Average Luminance
45°	7799
55°	6245
65°	5650
75°	5052
85°	3914

Downlight with Narrow Flood Optic

Photometric Report

Test Report #: PT01142307R
Catalog No: 2B-835N1-WWH
 80 CRI, 3500K LED White Baffle with Narrow Flood Optic
Luminaire Spacing Criterion: 0.40
Luminaire LPW: 62



Candlepower Distribution (Candelas)

Degrees Vertical	0°
0	2736
5	2376
15	910
25	245
35	37
45	12
55	8
65	5
75	3
85	1
90	0

Average Initial Footcandles

Multiple Units (Square Array, 60'x60' room)
 Ceiling 80%, Wall 50%, Floor 20%

Spacing	RCR1	RCR3	RCR5
4'	44	39	36
5'	28	25	23
6'	19	18	16
7'	16	14	13
8'	12	11	10
9'	10	9	8
10'	7	6	6

Zonal Lumen Summary

Zone	Lumens	%Lamp	%Fixture
0-30°	572	N/A	91.7
0-40°	599	N/A	96.0
0-60°	615	N/A	98.6
0-90°	624	N/A	100.0

Initial Footcandles

(One Unit, 10.1W, 23.3° Beam)

Distance to Illuminated Plane (Feet)	Footcandles Beam Center	Beam Diameter
4'	170.9	1.6
6'	76.0	2.5
8'	42.7	3.3
10'	27.4	4.1
12'	19.0	4.9

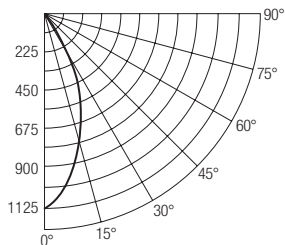
Luminance (Average cd/m²)

Degrees	Average Luminance
45°	7799
55°	6245
65°	5650
75°	5052
85°	3914

Downlight with Flood Optic

Photometric Report

Test Report #: PT01142303R
Catalog No: 2B-835F1-WWH
 80 CRI, 3500K LED White Baffle with Flood Optic
Luminaire Spacing Criterion: 0.68
Luminaire LPW: 61



Candlepower Distribution (Candelas)

Degrees Vertical	0°
0	1125
5	1072
15	786
25	412
35	111
45	24
55	9
65	6
75	4
85	1
90	0

Average Initial Footcandles

Multiple Units (Square Array, 60'x60' room)
 Ceiling 80%, Wall 50%, Floor 20%

Spacing	RCR1	RCR3	RCR5
4'	43	38	33
5'	27	24	21
6'	19	17	15
7'	15	14	12
8'	12	11	10
9'	9	8	7
10'	7	6	5

Zonal Lumen Summary

Zone	Lumens	%Lamp	%Fixture
0-30°	502	N/A	81.6
0-40°	575	N/A	93.4
0-60°	604	N/A	98.1
0-90°	616	N/A	100.0

Initial Footcandles

(One Unit, 10.1W, 42.2° Beam)

Distance to Illuminated Plane (Feet)	Footcandles Beam Center	Beam Diameter
4'	70.3	3.1
6'	31.3	4.6
8'	17.6	6.2
10'	11.3	7.7
12'	7.8	9.3

Luminance (Average cd/m²)

Degrees	Average Luminance
45°	16402
55°	7137
65°	7264
75°	7029
85°	5871

2" LED Square Downlight Photometric Information

Downlight with Spot Optic

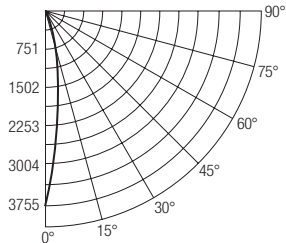
Photometric Report

Test Report #: PT01142104R

Catalog No: 2SQ-835S1-WWH
80 CRI, 3500K LED White Reflector with Spot Optic

Luminaire Spacing Criterion: 0.32

Luminaire LPW: 62



Candlepower Distribution (Candelas)

Degrees Vertical	0°
0	3755
5	2969
15	862
25	98
35	30
45	14
55	11
65	8
75	5
85	2
90	0

Average Initial Footcandles

Multiple Units (Square Array, 60'x60' room)

Ceiling 80%, Wall 50%, Floor 20%

Spacing	RCR1	RCR3	RCR5
4'	44	40	37
5'	28	26	24
6'	20	18	16
7'	16	14	13
8'	13	11	11
9'	10	9	8
10'	7	6	6

Zonal Lumen Summary

Zone	Lumens	%Lamp	%Fixture
0-30°	569	N/A	90.5
0-40°	591	N/A	94.0
0-60°	613	N/A	97.5
0-90°	629	N/A	100.0

Initial Footcandles

(One Unit, 10.1W, 17.7° Beam)

Distance to Illuminated Plane (Feet)	Footcandles Beam Center	Beam Diameter
4'	235.9	1.2
6'	104.9	1.9
8'	59.0	2.5
10'	37.8	3.1
12'	26.2	3.7

Luminance (Average cd/m²)

Degrees	Average Luminance
45°	14448
55°	13749
65°	13995
75°	14542
85°	15423

Downlight with Narrow Flood Optic

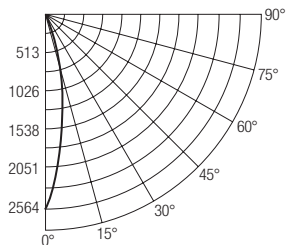
Photometric Report

Test Report #: PT01142202R

Catalog No: 2SQ-835N1-WWH
80 CRI, 3500K LED White Reflector with Narrow Flood Optic

Luminaire Spacing Criterion: 0.40

Luminaire LPW: 57



Candlepower Distribution (Candelas)

Degrees Vertical	0°
0	2564
5	2235
15	848
25	141
35	29
45	15
55	11
65	8
75	5
85	2
90	0

Average Initial Footcandles

Multiple Units (Square Array, 60'x60' room)

Ceiling 80%, Wall 50%, Floor 20%

Spacing	RCR1	RCR3	RCR5
4'	41	37	33
5'	26	23	21
6'	18	16	15
7'	15	13	12
8'	12	10	10
9'	9	8	7
10'	7	6	5

Zonal Lumen Summary

Zone	Lumens	%Lamp	%Fixture
0-30°	520	N/A	89.6
0-40°	543	N/A	93.6
0-60°	565	N/A	97.4
0-90°	581	N/A	100.0

Initial Footcandles

(One Unit, 10.1W, 23.40° Beam)

Distance to Illuminated Plane (Feet)	Footcandles Beam Center	Beam Diameter
4'	160.3	1.7
6'	71.2	2.5
8'	40.1	3.3
10'	25.6	4.1
12'	17.8	5.0

Luminance (Average cd/m²)

Degrees	Average Luminance
45°	15462
55°	14062
65°	13995
75°	14542
85°	14395

Downlight with Flood Optic

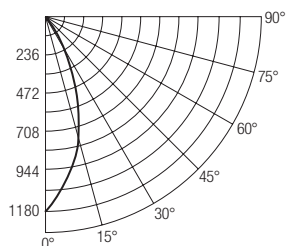
Photometric Report

Test Report #: PT01142105R

Catalog No: 2SQ-835F1-WWH
80 CRI, 3500K LED White Reflector with Flood Optic

Luminaire Spacing Criterion: 0.66

Luminaire LPW: 60



Candlepower Distribution (Candelas)

Degrees Vertical	0°
0	1180
5	1126
15	811
25	343
35	66
45	24
55	10
65	9
75	5
85	2
90	0

Average Initial Footcandles

Multiple Units (Square Array, 60'x60' room)

Ceiling 80%, Wall 50%, Floor 20%

Spacing	RCR1	RCR3	RCR5
4'	42	37	33
5'	27	24	21
6'	19	16	15
7'	16	13	12
8'	12	10	9
9'	9	8	7
10'	7	6	5

Zonal Lumen Summary

Zone	Lumens	%Lamp	%Fixture
0-30°	498	N/A	82.7
0-40°	554	N/A	92.0
0-60°	585	N/A	97.2
0-90°	602	N/A	100.0

Initial Footcandles

(One Unit, 10.1W, 39.8° Beam)

Distance to Illuminated Plane (Feet)	Footcandles Beam Center	Beam Diameter
4'	73.8	2.9
6'	32.8	4.3
8'	18.4	5.8
10'	11.8	7.2
12'	8.2	8.7

Luminance (Average cd/m²)

Degrees	Average Luminance
45°	25854
55°	13437
65°	15267
75°	15235
85°	14395

Energy efficient fixtures for standard ceilings, sloped ceilings and limited space applications



Juno 4" LED Recessed Adjustable Lighting



Juno Recessed LED Downlights



Juno Residential Recessed Lighting



Juno Retrofit LED Recessed Lighting



Juno Slope Ceiling Generation 3 LED Downlights



Juno Undercabinet Lighting



Juno Undercabinet Solo-Task LED Lighting



Juno Step Lighting

Juno[®]

Recessed and Trac Lighting

indy[™]

Architectural Recessed Lighting

AccuLite[™]

Commercial and Industrial Lighting

AcuLux[®]

Precision Recessed Lighting

Navilite[®]

Exit and Emergency Lighting

DanaLite

Architectural Linear Lighting



Juno Lighting Group

1300 South Wolf Road
Des Plaines, IL 60018
Ph: 847.827.9880
www.junolightinggroup.com

Regional Offices & Warehouses

California
Illinois
Indiana
Pennsylvania
Texas
Ontario, CN

©2014 JUNO LIGHTING, LLC. The marks appearing in this catalog are registered trademarks of Juno Lighting, LLC unless otherwise noted. Products shown in this brochure are covered by U.S. and international patents and patents pending. Specifications subject to change without notice.