



100 LINE LED

Performance Sconces

PHILIPS

 **GARDCO**



101L Trapezoidal Wedge

With its tapered rectilinear form, this family immediately impresses with styling that integrates comfortably with a wide range of architectural elements.

The lighting's on the wall.

In 1992 Gardco Lighting introduced a product that completely altered the shape and character of wall mounted illumination. No longer were glare-inducing wall packs the de facto choice for building façades, loading docks and walkways. By incorporating full cutoff performance, usable illumination patterns and powerful wattages into compact and architecturally pleasing designs, Gardco forever changed the lighting specifier's expectations. The fact that a great many manufacturers were quick to offer their own versions of this revolutionary approach proves that, once again, Philips Gardco leads the way. Now, with the addition of energy efficient LED sources the 100 LINE is poised to do it again.

With the 100 LINE LED luminaires, specifiers will find compact wall sconces that provide wide flexibility in high performance illumination and new opportunities to make a sustainable architectural statement. Available in two LED wattages and three distribution patterns, these luminaires continue the Philips Gardco tradition of beautifully advancing the art and science of illumination.



102L Rounded Wedge

The distinctive contoured wedge of the 102L establishes styling cues that prevail throughout the series – crisp, simple design and efficient scale.

With the addition of LED the industry's most diverse line of performance sconces continues to set the standard.



104L Half Cylinder

This half-round shape integrates naturally with architecture that features soft, rounded corners and forms. The 104L is the perfect companion for Philips Gardco's Round Form Ten cylindrical site lighting products.



106L Quarter Sphere

The classic shape of the 106L can add subtle styling to a variety of architectures. The 106L can also be used in tandem with the domed styles of the Gardco Round Form Ten family.



107L Gullwing Sconce

The Gullwing sconce is the streamlined companion to the popular Philips Gardco Gullwing series of area lighting luminaires. The scale of the 107L allows it to perfectly match with the larger G18 or the smaller G13 Gullwing.



108L Circa Sconce

The accent ring in the 108L can be painted to either match or complement the luminaire or finished in an elegant stainless steel. For even further dramatic impact, the ring can be specified with colorful self-illuminated LEDs that dramatically enhance a site as no other luminaire can.



108L Circa Sconce (Less Ring)

Specifying the 108L without the ring gives it a completely different look. The slim appearance of the luminaire can add an understated yet elegant look to an otherwise unremarkable building façade.

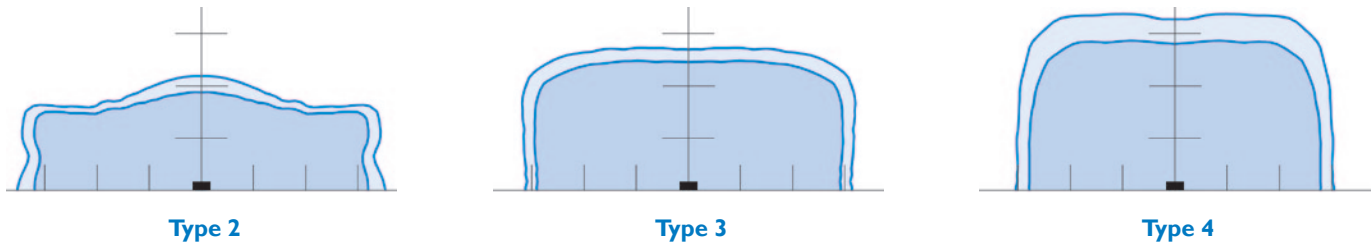


109L Contura Sconce

Like the Gullwing and Circa sconces, the 109L is part of an integrated series that includes pole and post top mounted area luminaires. This architecturally refined sconce mirrors the styling of the Philips Gardco Contura luminaire and is designed to naturally integrate with the surface of the wall.

Performance

Philips Gardco Sconces are available in a Type II (2) wide throw with maximized lateral spacing; a Type III (3) optimized wide throw that adds excellent forward contribution; and a Type IV (4) with maximized forward throw distribution for small parking areas. All carry an IP66 rating and are rated wet location for downlighting applications and are suitable for damp location uplighting in lobbies, atriums and beneath canopies.



High Light Levels and Uniform Distribution

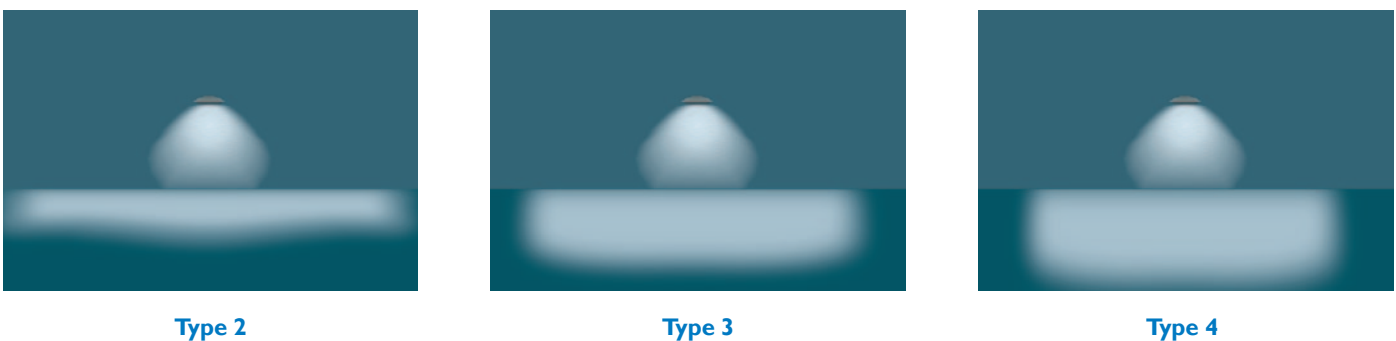
Optical systems feature advanced Class 1 LED arrays designed to efficiently direct light into very wide or forward projecting light patterns without hot spots, streaks or striations.

Spacings

Sconce spacings can be driven by aesthetics, economy, or a combination of both. For aesthetic purposes, the luminaire style and placement are selected first, followed by the selection of the optical system. In this scenario, the sconce may satisfy primary or supplemental lighting requirements. When economy rules and wide spacings are required, the Philips Gardco 100 LINE LED offers 5:1 spacing to mounting height ratios with Type 2 optics. At a 12' mounting height, sconces may be spaced as far as 60' apart. If critical light levels are required at the property line, Type 4 optics with the optional 5° up tilt project light in a more forward direction. For the best of both worlds, the Type 3 offers excellent lateral spacings and forward projection in a very usable rectangular pattern.

Control of Glare & Light Trespass

The factor most destructive to lighting performance is glare. The traditional refractor wall pack generates light at excessively high angles – creating glare within a driver's or pedestrian's field of view. In addition, light above 90° may result in distracting brightness into neighboring spaces. Philips Gardco performance sconces utilize precision LED optical systems which meet IES full cutoff criteria. This assures that light above 80° is minimized and light above 90° is eliminated – resulting in exceptional control of luminaire brightness and undesired illumination beyond the property line.



The three-dimensional interpretation of typical performance presented here demonstrates the asymmetric distributions available with Types 2, 3 and 4 optical systems. Enhancement of the building facade as well as reduced glare illumination are all part of the sconce standard offering. Note the cutoff of these optical systems at the edge of the distribution.

Further photometric information is available through your Philips Gardco representative or our Applications Engineering Department.



Energy usage that doesn't drive you up a wall

The use of LED technology allows for improved light output and a longer lifespan than traditional HID sources while consuming a mere fraction of the power. Each of the Philips Gardco 100 LINE LED performance sconces contains an advanced Class 1 LED array system that defines new standards for wall mounted illumination and efficiency. These systems use up to 50% less energy resulting in a reduction in operating costs of up to 40% when compared with most HID wall mounted systems in use today. This translates into real savings and reduced environmental impact in both the short and long term.



DynaDimmer

The 100 LINE LED luminaires are available with the Philips DynaDimmer module. This energy saving module allows for reducing the power and lamp output by 50%.

Cost savings and reduced energy usage is only the beginning. Further savings can be realized by utilizing one of the dimming configurations available with the 100 LINE LED. These configurations can reduce power usage by an additional 50% over using the LED source alone. Additional dimming options can be based on time of day, ambient light, or any other control parameters desired (actual dimming system supplied by others).

Automatic Profile Dimming

The 100 LINE LED with Automatic Profile Dimming (-APD) provides guaranteed savings by reducing power and light output by 50% during periods of low traffic. By calculating the night-time midpoint, power is reduced by 50% during the two hours prior to and the six hours after. This results in an automatic additional energy savings of 33% on average.



102L luminaires shown with bronze paint (BRP)



101L luminaire shown with bronze paint (BRP)

The 100 LINE LED performance sconces are equal parts engineering, design and performance. Sleek and stylish, they are clearly superior to obtrusive, glaring wall packs.

With tapered forms and subtle twin edge reveals, these compact sconces seamlessly integrate into every application and budget. The forms can be paired with matching Philips Gardco pole mounted luminaires to create an elegantly unified site lighting plan.

Applications

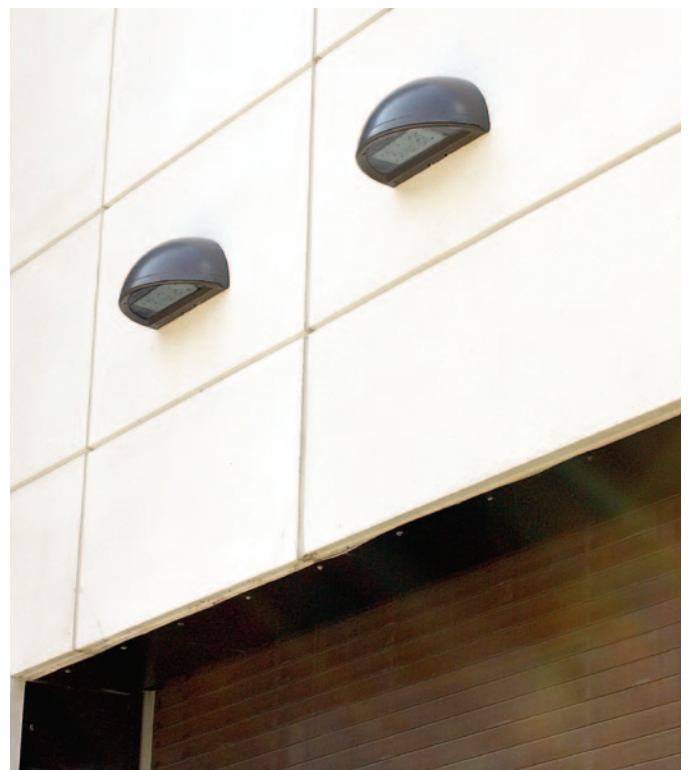
The broad choice in housing styles, optics and lamp combinations offers numerous options in balancing the illumination and aesthetic requirements of a project. Whether they are used on building entrances, over ATMs or on loading docks, there is no need to compromise appearance for performance.



107L Gullwing Sconces shown with natural aluminum paint (NP)

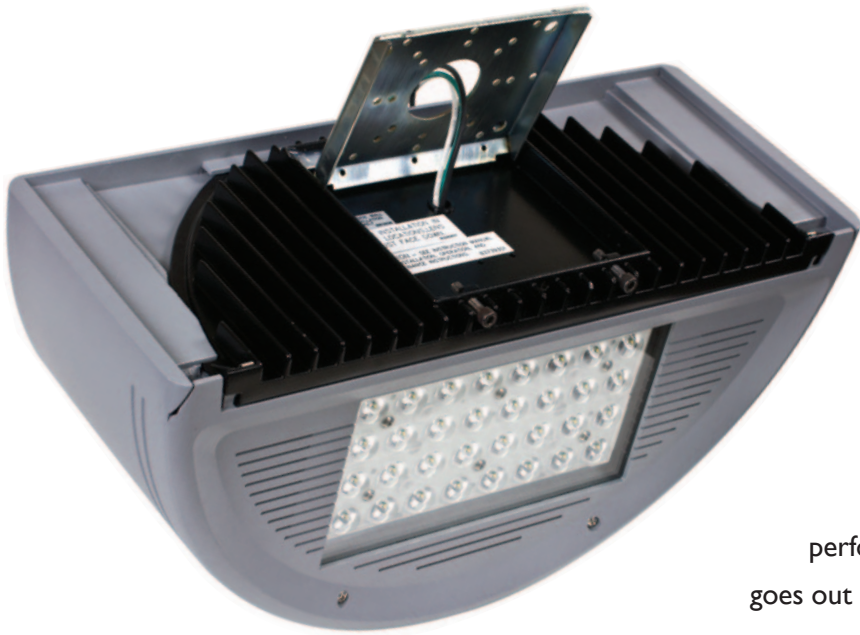


104L luminaires shown with natural aluminum paint (NP)



106L luminaires shown with bronze paint (BRP)

Intelligent design, rugged construction



While the architectural appeal of Philips Gardco sconces is self-evident, equal attention has been devoted to the construction and long term performance of the luminaires. It is a quality that never goes out of style.

Easy Mounting

The luminaire installs easily. The mounting plate is affixed to the wall, splices are made and the luminaire is secured to the plate.

At every level, simple details make these sconces the very best available. It is an attention to detail that encompasses not only innovative design, but every aspect of luminaire integrity and performance. In every luminaire, one finds seamless material transitions, true performance optics and thoughtful engineering considerate of installation, service and long term operation.

All Philips Gardco 100 LINE LED housings, door frames and back plates are precision die cast aluminum. The single-piece die cast door frame fits flush to the housing. Quality gaskets seal the tempered lens to the door frame and the door frame to the housing while two captive stainless fasteners provide easy access for servicing.

Every Philips Gardco sconce must pass a comprehensive battery of electrical tests prior to shipment.



Die Cast Ribbed Backplate

The die cast ribbed back plate dissipates heat from the electrical components, which are mounted to the plate within the housing. Proper thermal management is crucial to maintaining long LED life.



Ease of Maintenance

The die cast door frame is secured with two captive stainless steel fasteners and hinges open for easy access. Integral slots within the door allow for proper airflow and cooling.

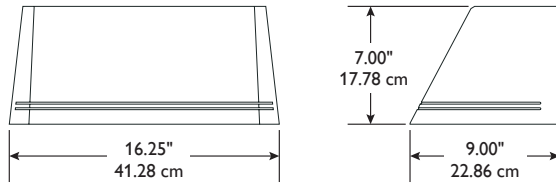


Durable Finishes

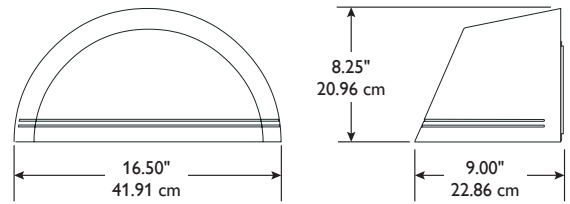
The housings are finished with a fade and abrasion resistant polyester powdercoat finish. The textured semi-gloss finish preserves the appearance of the luminaire through many years of service.

Dimensions

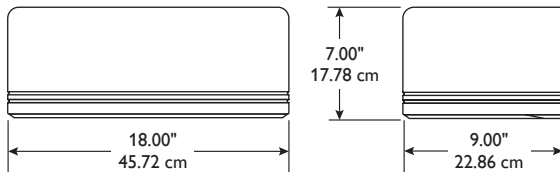
101L



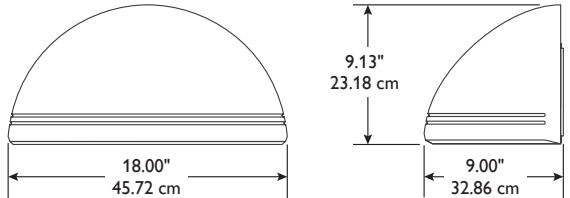
102L



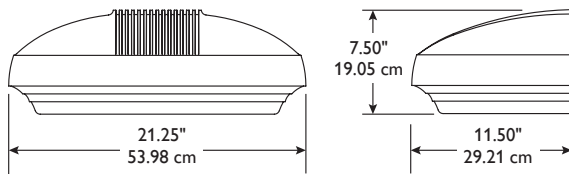
104L



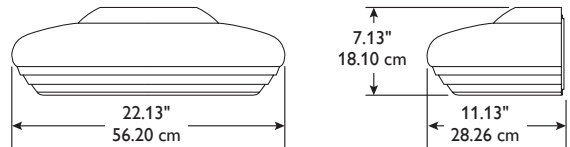
106L



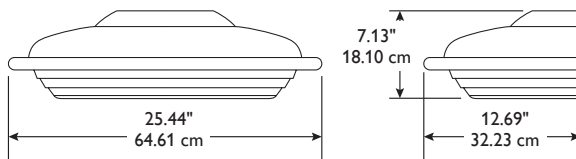
107L



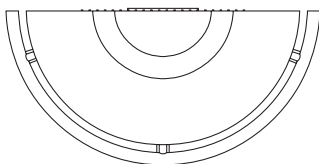
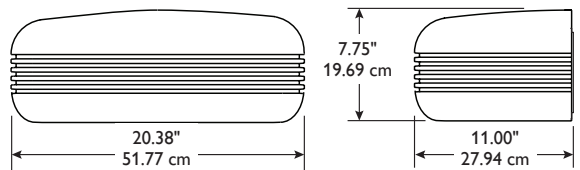
108L (Less Ring)



108L

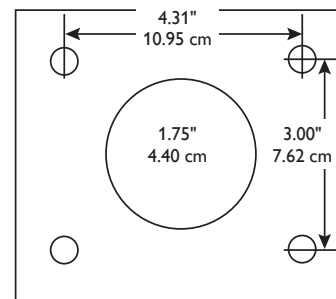


109L



Top View of 108L with Ring

Mounting Plate



Mounting Bolt Pattern

Philips Gardco reserves the right to change materials or modify the design of its product without notification as part of the company's continuing product improvement program.

Note: Mounting plate center is located in the center of the luminaire width and 3.5" (8.89cm) above the luminaire bottom (lens down position). Splices must be made in the J-box (by others). Mounting plate must be secured by max. 5/16" (.79cm) diameter bolts (by others) structurally to the wall.

100 LINE LED Specifications

GENERAL DESCRIPTION: The Philips Gardco 100 LINE LED high performance sconce luminaires are designed to integrate naturally to wall surfaces. 100 LINE LED luminaires are available with three (3) different distribution patterns, providing full cutoff performance (in the downlight position) and feature LED arrays. High performance Class 1 LED systems offer potential energy savings of 50 % or more when compared with HID systems.

HOUSING: Housings are die cast aluminum. A memory retentive gasket seals the housing to the door frame. A black, die cast ribbed backplate dissipates heat for longer system life.

DOOR/LENS ASSEMBLY: A single-piece die cast aluminum door frame integrates to the housing form. The door frame is hinged closed and secured to the housing with captive stainless steel fasteners. The heat and impact resistant 1/8" (.32cm) tempered glass lens and one-piece gasket are mechanically secured to the door frame with galvanized steel retainers.

IP RATING: 100 LINE LED luminaires are rated IP66.

LED THERMAL MANAGEMENT: Philips Gardco 100 LINE LED luminaires utilize extruded aluminum integral thermal radiation fins to provide the excellent thermal management so critical to long LED system life.

LED RELIABILITY:

PREDICTED LUMEN DEPRECIATION DATA		
Ambient Temperature °C	LED Wattages / Driver mA	L70 Hours
25 °C	35LA / 350 mA	150,000
	55LA / 530 mA	100,000
40 °C	35LA / 350 mA	100,000
	55LA / 530 mA	70,000

Predicted performance derived from LED manufacturer's data and engineering design estimates, based on IESNA LM-80 methodology. Actual experience may vary due to field application conditions. L70 is the predicted time when LED performance depreciates to 70% of initial lumen output.

OPTICAL SYSTEMS: Philips Gardco 100 LINE LED luminaires utilize lensed LED arrays set to achieve IES Type II, Type III, and Type IV distributions. Individual LED arrays are replaceable. Luminaires feature high performance Class 1 LED systems.

ELECTRICAL: Luminaires are equipped with an LED driver that accepts 120V through 277V, 50hz to 60hz, input. Driver output is based on the LED wattage selected. Component-to-component wiring within the luminaire will carry no more than 80% of the rated current and is listed by UL for use at 600 VAC at 302°F / 150°C or higher. Plug disconnects are listed by UL for use at 600 VAC, 15A or higher. Power factor is not less than 90%. The luminaire consumes 0.0 watts in the off state. Surge protection, when provided as an option, provides protection to 10kv.

FINISH: Each standard color luminaire receives a fade and abrasion resistant, electrostatically applied, thermally cured, triglycidic isocyanurate (TGIC) textured polyester powdercoat finish. Standard colors include bronze (BRP), black (BLP), white (WP), beige (BGP) and natural aluminum (NP). Consult factory for specifications on optional or custom colors.

LED RING (108L): The 108L luminaire with the LED Ring option is provided with a decorative acrylic rod shaped to follow the contour of luminaire and is illuminated at each end by light emitting diode (LED) illuminator assemblies.

The rod has a reflective coating causing an even brightness along its length resembling luminous tube lighting. There are no breaks, discrete spots, or other discontinuities visible at the intended viewing angles.

The method of rod attachment to the luminaire allows for thermal expansion and contraction from -70°F/-57°C to +120°F/49°C without causing damage to the assembly. Each end of the illuminator assembly consists of a polycarbonate thermoplastic housing which encloses the LEDs.

The illuminators are energized by a solid state constant current power supply. Primary wavelengths for the available colors are: Red - 626-635 nm; Orange - 605-609 nm; Amber - 590-592 nm; Green - 520-525 nm; Blue - 465-470 nm.

LABELS: All luminaires bear UL or CUL (where applicable) labels. Lens down application is Wet Location and lens up is Damp Location.

WARRANTY: Philips Gardco luminaires feature a 5 year limited warranty. Philips Gardco LED luminaires with LED arrays feature a 5 year limited warranty covering the LED arrays. Polycarbonate lenses carry a 1 year warranty only. See Warranty Information on sitelighting.com for complete details and exclusions.

Prior to ordering, consult Submittal Data Sheet on sitelighting.com for the most current information, notes and exclusions.

Philips Gardco reserves the right to change materials or modify the design of its product without notification as part of the company's continuing product improvement program.

100 LINE LED Ordering

Example	PREFIX	DISTRIBUTION	LED WATTAGE	LED SELECTION	VOLTAGE	PAINTED FINISH	RING (108L only)	OPTIONS
	108L	3	55LA	NW	UNIV	NP	AR	F
	101L	2 IES Type II	35LA	CW	UNIV	BRP Bronze	AR	F
	102L	3 IES Type III	55LA	Cool White	120V through	BLP Black	SR	PCB
	104L	4 IES Type IV		NW	277V	WP White	OR	DL
	106L	Quarter Sphere		Neutral White		NP Natural Aluminum	LR	PSO
	107L	Gullwing Sconce		WW		BGP Beige	<u>LED Rings</u>	UT
	108L	Circa Sconce		Warm White		OC Optional Color	LER	WS
	109L	Contura Sconce				SC Special Color	LEO	WS/UT
							LEA	WG
							LEG	SPRA
							LEB	

Prefix Options
 Add ordering code to end of prefix. ex. 101L-DCC
-DCC Dual Arrays with Dual Circuit Control
-DIM 0 - 10V Dimming
-APD Automatic Profile Dimming

LUMINAIRE CONFIGURATION INFORMATION

- Standard:** Philips Gardco performance LED sconce providing constant wattage and constant light output when power to the luminaire is energized.
- DCC:** Philips Gardco performance LED sconce provided with dual circuiting, and dual arrays, permitting separate switching of each led array.
- DIM:** Philips Gardco performance LED sconce provided with 0 -10V dimming for connection to a control system provided by others.
- APD:** Philips Gardco performance LED sconces with Automatic Profile Dimming are provided with the Philips DynaDimmer module included. The DynaDimmer module is programmed to go to 50% power, 50% light output two (2) hours prior to night time mid-point and remain at 50% for six (6) hours after night time mid-point. Mid-point is continuously calculated by the DynaDimmer module based on the average mid-point of the last two full night cycles. Short duration cycles, and power interruptions are ignored and do not affect the determination of mid-point.

RING (108L ONLY)

AR	Aluminum (painted to match housing)
SR	Stainless Steel
OR	Optional Color
LR	Less Ring
<u>LED Rings</u>	
LER	Red
LEO	Orange
LEA	Amber
LEG	Green
LEB	Blue

OPTIONS

F	Fusing
PCB	Button Type Photocontrol
DL	Diffusing Lens
PSO	Offset Polycarbonate Flat Shield
UT	5° Uptilt
WS	Wall Mounted Box for Surface Conduit
WS/UT	WS Option with 5° Uptilt
WG	Wire Guard
SPRA	Surge Protection - 120V through 277V Input meeting ANSI C62.41.2

Philips Gardco reserves the right to change materials or modify the design of its product without notification as part of the company's continuing product improvement program.

Prior to ordering, consult Submittal Data Sheet on sitelighting.com for complete and current information, specifications, notes and exclusions.



101L luminaires shown with bronze paint (BRP)

1611 Clovis Barker Road
San Marcos, TX 78666
512/753-1000
800/227-0758
Fax: 512/753-7855
sitelighting.com



Philips Gardco Warranty

Philips Gardco luminaires feature a 5 year limited warranty. Philips Gardco LED luminaires with LED arrays feature a 5 year limited warranty covering the LED arrays. Polycarbonate lenses carry a 1 year warranty only. See Warranty Information on sitelighting.com for complete details and exclusions.



© 2011 Koninklijke Philips Electronics N.V.
All Rights Reserved.

Document order number: G100-025/0811