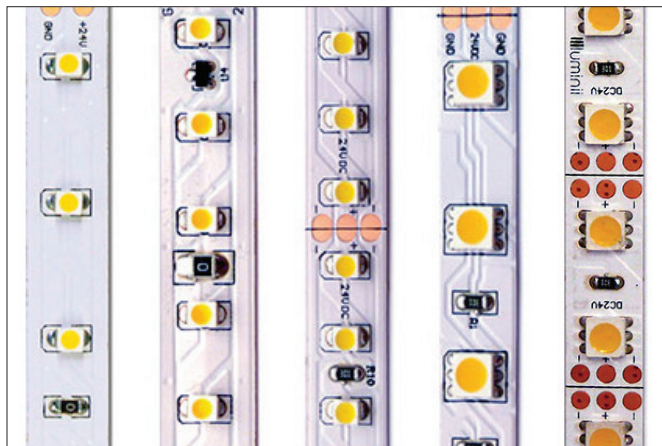


LineLED 24V Linear LED strip - 24 VDC



The LineLED is a small profile and energy efficient light strip. It is easily installed directly on to the mounting surface with double sided tape or within discrete mounting extrusions. The durable but flexible circuit board and multiple connector options enable the extension of the light strip and the perfect fit for every application.

Applications:

Indoor only - above and below cabinets, cove lighting, counter accent, architectural reveals, under banister, display and book cases, etc.

Operating voltage
24 VDC

Operating temperature
- 40°F to 140°F
(- 40°C to 60°C)

Average life
50,000 hours

Mounting
LLED strip is equipped with 3M self-adhesive tape. The strip must be adhered to either a Luminii aluminum profile or an unpainted aluminum surface. For other surfaces the HST Aluminum heat sink tape will be required to reach the rated 50,000 hours average life

Approvals
Class 2 damp listed

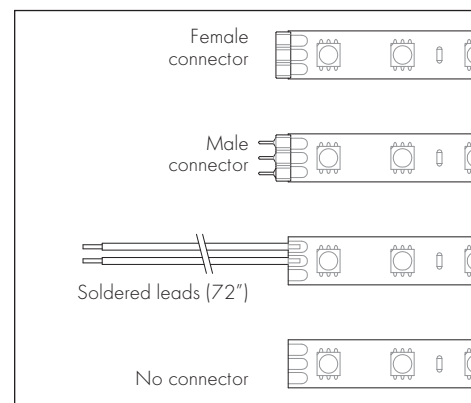


dimmable

Technical information

MODELS	LL18	LL30	LL36	LLX18	LLX22
LEDs/ft	18	30	36	18	22
Light output of 2900 K with high CRI	121 lum/ft	218 lum/ft	243 lum/ft	361 lum/ft	430 lum/ft
Average power consumption (for 15' section)	1.5 W/ft	2.5 W/ft	3.0 W/ft	4.3 W/ft	4.6 W/ft
Ordering increment	4.00"	2.50"	2.00"	4.00"	1.13"
Maximum run length	100 ft	48 ft	39 ft	25 ft	23 ft
Dimensions	0.38" W 0.05" H	0.44" W 0.09" H	0.38" W 0.06" H	0.38" W 0.09" H	0.39" W 0.13" H

SECTION START/END OPTIONS



Ordering code

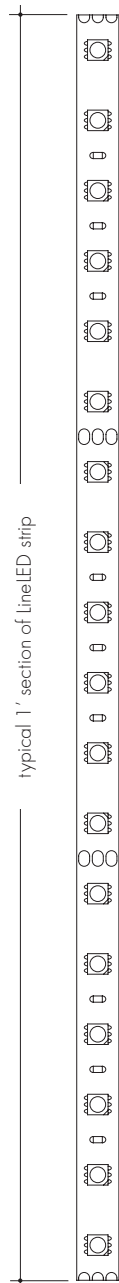
MODEL	CRI	COLOR TEMPERATURE	SECTION START	SECTION END	LENGTH
LL18	S	22K	F	M	
LL18	S - Standard	22K - 2200K*	F - Female connector	F - Female connector	view table above for increment options and maximum run limits
LL30	H - High	27K - 2700K	M - Male connector	M - Male connector	
LL36		29K - 2900K	SL - Soldered lead wires (72")	SL - Soldered lead wires (72")	
LLX18		30K - 3000K	NC - No connector	NC - No connector	
LLX22		34K - 3400K**			
		41K - 4100K			

* 2200 K only available with standard CRI (S)

** 3400 K only available with high CRI (H)

LineLED 24V Linear LED strip - 24 VDC

Power consumption per linear foot - loads tested with PSD series of power supplies (page3)



Length of strip (LF)	LL18		LL30		LL36		LLX18		LLX22	
	W/ft	Total wattage	W/ft	Total wattage	W/ft	Total wattage	W/ft	Total wattage	W/ft	Total wattage
1	1.65	1.65	2.70	2.70	3.25	3.25	5.00	5.00	5.60	5.60
2	1.65	3.30	2.70	5.40	3.25	6.50	4.95	9.90	5.55	11.10
3	1.65	4.95	2.70	8.10	3.25	9.75	4.90	14.70	5.50	16.50
4	1.63	6.58	2.65	10.60	3.20	12.80	4.85	19.40	5.45	21.80
5	1.63	8.21	2.65	13.25	3.20	16.00	4.80	24.00	5.40	27.00
6	1.62	9.83	2.65	15.90	3.15	18.90	4.75	28.50	5.35	32.10
7	1.62	11.45	2.60	18.20	3.15	22.05	4.70	32.90	5.25	36.70
8	1.62	13.07	2.60	20.80	3.10	24.80	4.65	37.20	5.20	41.60
9	1.60	14.67	2.60	23.40	3.10	27.90	4.60	41.40	5.10	45.90
10	1.60	16.50	2.55	25.50	3.05	30.50	4.55	45.50	5.00	50.00
11	1.57	18.07	2.55	28.05	3.05	33.50	4.50	49.50	4.95	54.45
12	1.57	19.64	2.55	30.60	3.00	36.00	4.45	53.40	4.85	58.20
13	1.57	21.21	2.50	32.50	3.00	39.00	4.40	57.20	4.80	62.40
14	1.55	22.76	2.50	35.00	3.00	42.00	4.35	60.90	4.70	65.80
15	1.55	24.31	2.50	37.50	3.00	45.00	4.30	64.50	4.60	69.00
16	1.55	25.86	2.45	39.20	2.95	47.20	4.25	68.00	4.50	72.00
17	1.52	27.38	2.45	41.65	2.95	50.15	4.20	71.40	4.45	75.65
18	1.52	28.90	2.45	44.10	2.90	52.50	4.15	74.70	4.40	79.20
19	1.52	30.42	2.40	45.60	2.90	55.10	4.10	77.90	4.35	82.65
20	1.50	31.20	2.40	48.00	2.85	57.00	4.05	81.00	4.30	86.00
21	1.50	32.70	2.40	50.40	2.85	59.85	4.00	84.00	4.25	89.25
22	1.50	34.20	2.35	51.70	2.80	61.60	3.95	86.90	4.20	92.40
23	1.48	35.68	2.35	54.05	2.80	64.60	3.90	89.70	4.15	95.45
24	1.47	37.15	2.35	56.40	2.75	66.00	3.85	92.40		
25	1.47	38.62	2.30	57.50	2.75	68.75	3.80	95.00		
26	1.45	40.07	2.30	59.80	2.70	70.20				
27	1.45	41.52	2.30	62.10	2.70	72.90				
28	1.43	42.20	2.25	63.00	2.65	74.20				
29	1.42	43.00	2.25	65.25	2.65	76.85				
30	1.40	43.70	2.25	67.50	2.60	78.00				
31	1.40	45.10	2.20	68.20	2.60	80.60				
32	1.38	46.50	2.20	70.40	2.55	81.60				
33	1.37	47.70	2.20	72.60	2.55	84.15				
34	1.37	49.00	2.15	73.10	2.50	85.00				
35	1.36	50.45	2.15	75.25	2.50	87.50				
36	1.36	51.70	2.15	77.40	2.45	88.20				
37	1.36	52.50	2.10	77.70	2.45	90.65				
38	1.36	53.00	2.10	79.80	2.40	91.20				
39	1.35	53.90	2.10	81.90	2.40	93.60				
40	1.35	54.40	2.05	82.00						
41	1.35	55.75	2.05	84.05						
42	1.34	57.09	2.05	86.10						
43	1.34	58.43	2.02	86.90						
44	1.33	59.76	2.00	88.00						
45	1.33	61.07	2.00	90.00						
46	1.32	61.97	1.96	90.20						
47	1.32	62.70	1.95	91.65						
48	1.31	63.50	1.95	93.60						
49	1.31	64.05								
50	1.30	64.80								
51-60	1.30 - 1.25	65.20 - 70.80								
61-70	1.25 - 1.20	71.00 - 76.20								
71-80	1.20 - 1.10	77.00 - 81.60								
81-90	1.10 - 1.00	82.00 - 86.20								
91-100	1.00 - 0.95	87.00 - 91.40								

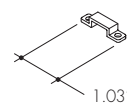
LineLED 24V Linear LED strip - 24 VDC

Typical Color Rendering Index values

Color temperature	CRI OPTIONS	
	Standard [+/- 200 K]	High [+/- 75 K and single bin]
2200 K	70	N/A
2700 K	72	80
2900 K	80	85
3000 K	80	93
3400 K	N/A	91
4100 K	67	93

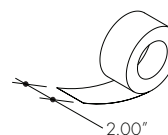
Mounting accessories

Mounting clip
Part # CL-1



(recommended at every 12" when LineLED strip is facing down)

Heat sink tape
Part # HST



(included with LineLED strip when no extrusions are ordered)

Power supply

See fixture and power supply instructions for wiring information. Dimming possible in select models - view Luminii website for list of compatible dimmers.

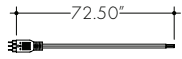
Series	Models	Height/Length	Width	Depth	VAC Input	Maximum wattage	Outdoor rated	Dimming
PSD (add -240 or -277 at the end of part number to order with higher input)	PSD-48-24	11.25"	3.37"	3.25"	120, 240, 277	48 W	Yes	Forward phase
	PSD-96-24	11.25"	3.37"	3.25"	120, 240, 277	96 W	Yes	Forward phase
	PSD-288-24	14.25"	8.43"	2.20"	120, 240, 277	3x 96 W	Yes	Forward phase
PSV* (at the end of part number, add DIM1-10 for 1-10 V dimming or -ND for non dimming)	PSV7P-25-24V-U2	5.83"	1.57"	1.26"	90-305	25 W	Yes	1-10 V or N/A
	PSV7P-40-24V-U2	6.40"	1.70"	1.26"	90-305	40 W	Yes	1-10 V or N/A
	PSV7P-60-24V-U2	6.40"	1.70"	1.26"	90-305	60 W	Yes	1-10 V or N/A
	PSV7P-90-24V-U2	6.34"	2.40"	1.42"	90-305	90 W	Yes	1-10 V or N/A
Lutron* Hi-Lume A-series LTE	LTEA4U1UKL-CV240	4.89"	4"	2.62"	120	40 W	No	Forward Phase
Lutron* Hi-Lume A-series L3D	L3DA4U1UKL-CV240	4.89"	4"	2.62"	120-277	40 W	No	Eco System
Plug-in	PI-130-24	3.40"	2.00"	1.21"	100-240	30 W	No	N/A
	PI-160-24	4.69"	2.04"	1.24"	100-240	60 W	No	N/A
	PI-196-24	5.69"	2.31"	1.31"	100-240	96 W	No	N/A

*Electrical enclosure required by others.

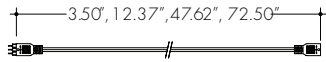
LineLED 24V Linear LED strip - 24 VDC

3-pin connectors

A 72" power feed
Part # PF-FC-72-BK (black) or -WH (white)



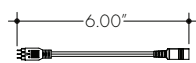
B 3", 12", 48", 72" flexible connector
Part # FC-3-BK (black) or -WH (white)
Part # FC-12-BK (black) or -WH (white)
Part # FC-48-BK (black) or -WH (white)
Part # FC-72-BK (black) or -WH (white)



"L" connector
Part # IL-CL

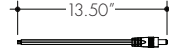
DC to 3-pin connector

C DC to 3-Pin converter
Part # DC3

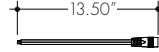


DC connectors

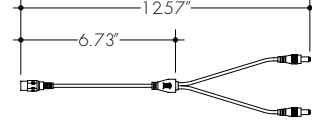
D Male quick-connect
Part # LMC and LMC-70



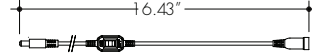
Female quick-connect
Part # LFC



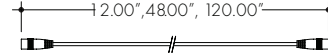
E Y-Splitter
Part # LYC



F On/Off switch
Part # IS-DC



Extension cable 12", 48", 120"
Part # EC-12
Part # EC-48
Part # EC-120

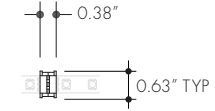


Female/male adapter
Part # FMA

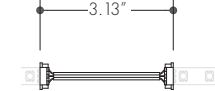


Field-cut connectors

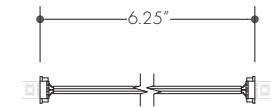
G Rigid connector
Part # RC-3P



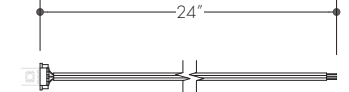
H Flexible 3"
Part # FCF-3P-3



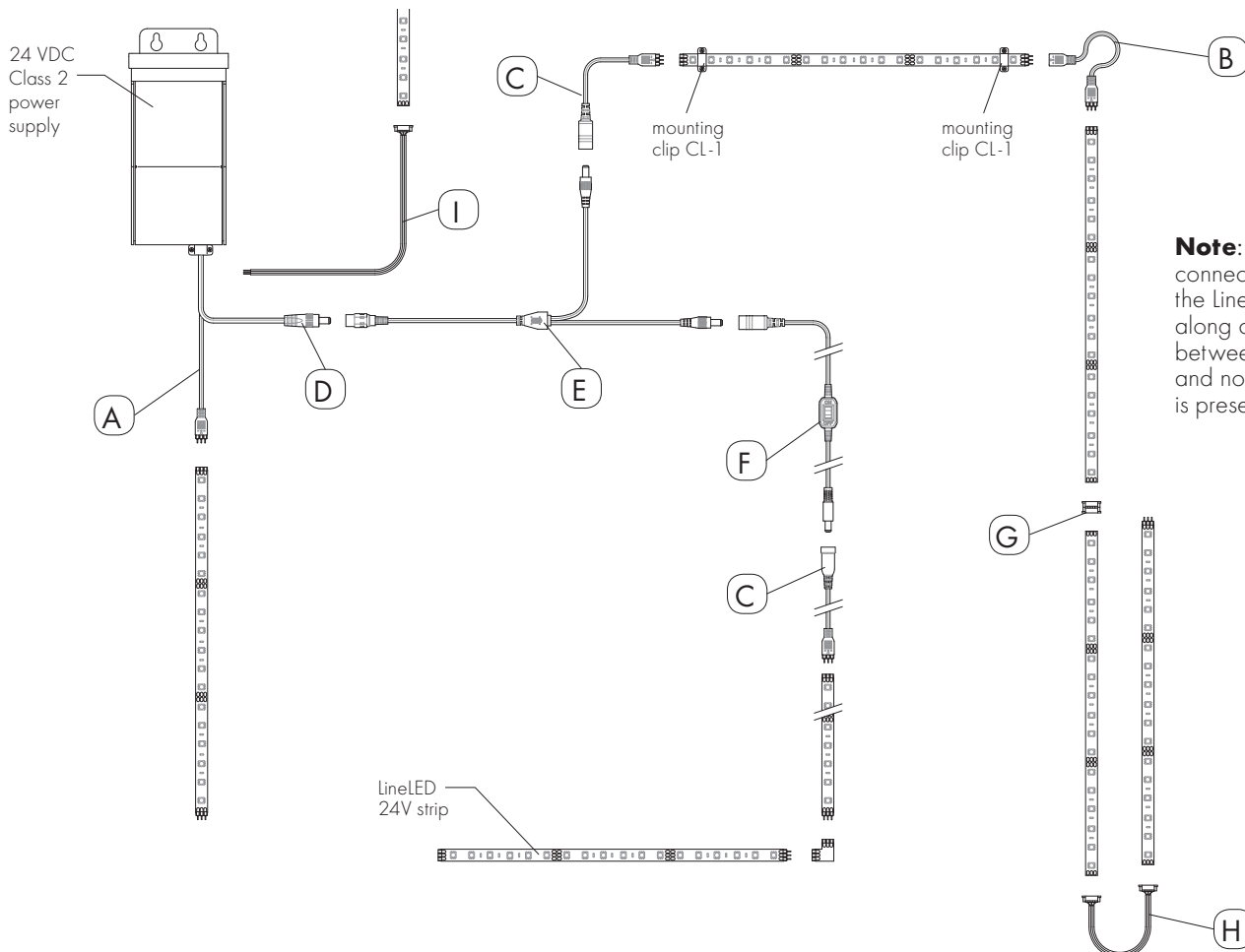
Flexible 6"
Part # FCF-3P-6



I Flexible power feed
Part # FCP-3P-24



Sample layout with connectors



Note: Use field-cut connectors (G,H,I) when the LineLED strip is cut along cutting lines in between solder pads and no other connector is present.

LineLED 24V Linear LED strip - 24 VDC

Optional mounting channels - Single row LEDs

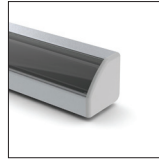
Alu-Round



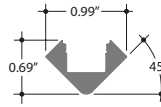
CL F N



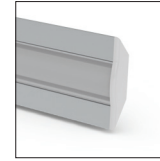
Alu-45



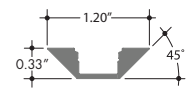
CL HF F



Alu-Corner



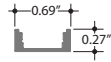
CL HF F



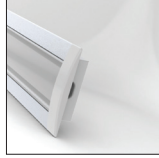
Slim Line 7 *



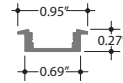
CL HF F N M



Recessed Slim Line 7 *



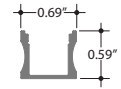
CL HF F N M



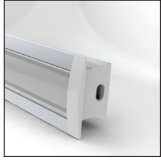
Slim Line 1.5



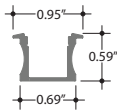
CL HF F N M



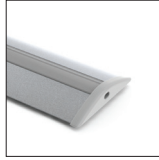
Recessed Slim Line 1.5



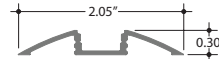
CL HF F N M



Alu-Flat



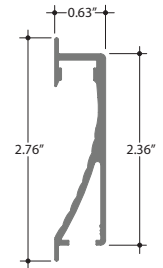
CL HF F



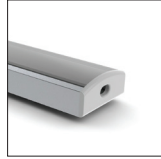
Alu-Wall



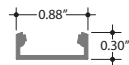
CL F



Slim Wide 8



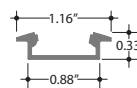
CL HF F



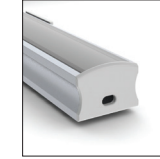
Recessed Slim Wide 8



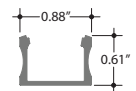
CL HF F



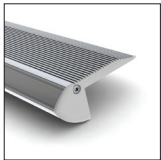
Slim Wide 1.5



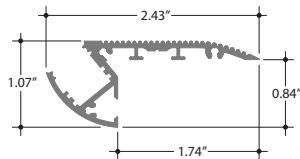
CL HF F



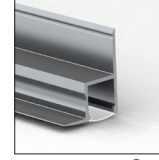
Alu-Stair



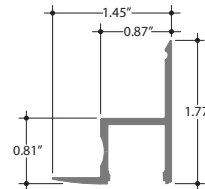
CL F



Alu-ETC



CL F

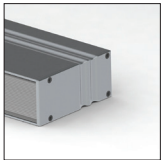


Lens options

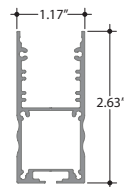
- CL Clear
- F Frosted
- HF Half (50%) frosted
- N Narrow beam frosted
- M Medium beam frosted

Optional mounting channels - Double row LEDs

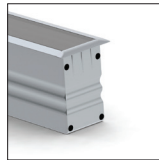
Power Line 30



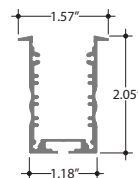
CL F



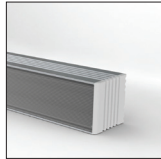
Recessed Power Line 30



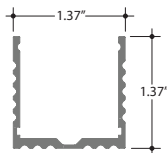
CL F



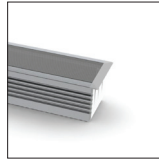
Power Line 35



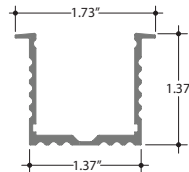
CL F



Recessed Power Line 35



CL F



Installation

All mounting channels are field cuttable using miter saw with circular blade suitable for cutting aluminum.

Ordering

Extrusions are sold separately. View respective spec sheets for details on ordering extrusions and their accessories (endcaps, mounting brackets, etc).

* NOTE

SlimLine 7 and Recessed SlimLine 7 extrusions are not suitable to be used with the LLX22 LED strip.