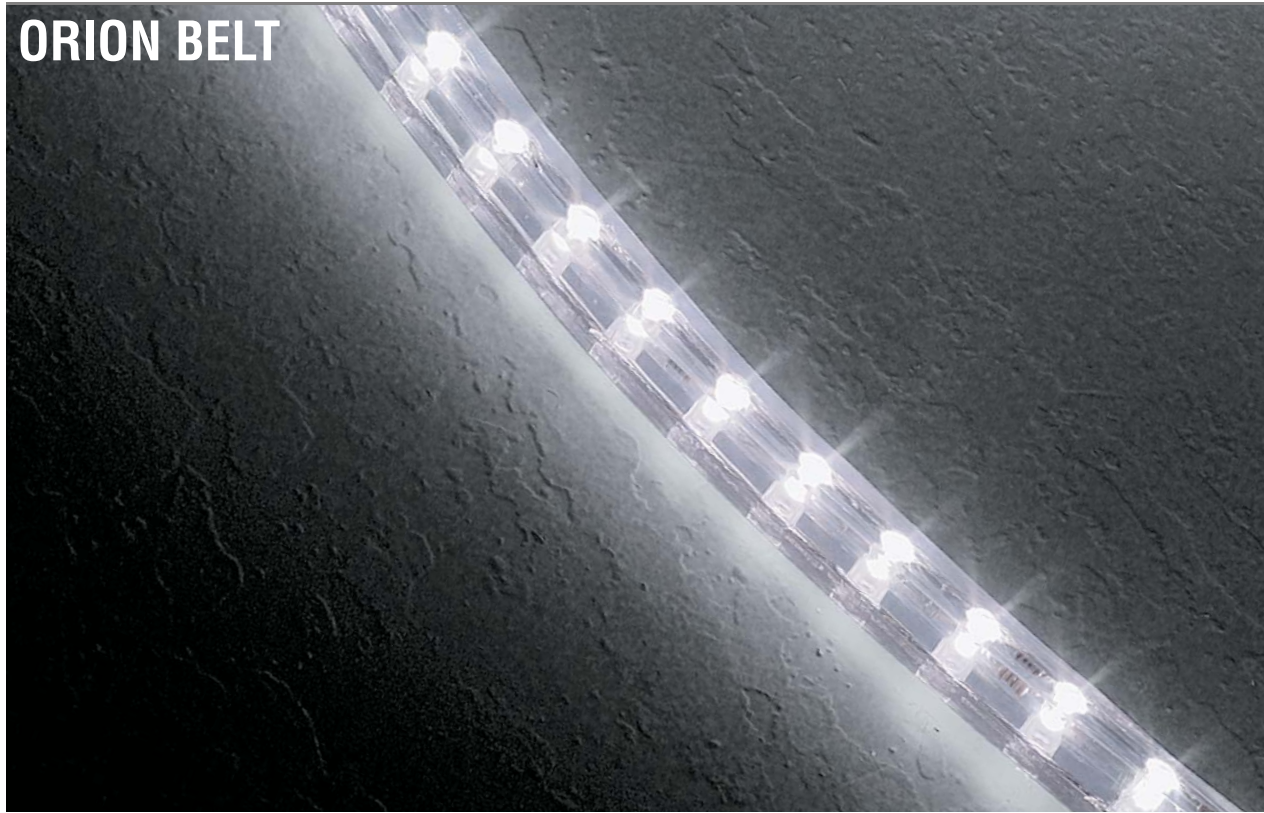
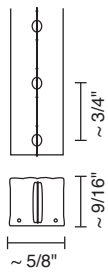


ORION BELT



The Orion Belt provides the benefits of LED lighting in a unique, fully encapsulated and flexible design. Narrow beam spread LED's are mounted 3/4" on center to achieve maximum luminous intensity. The encapsulation is transparent UV stabilized PVC, suitable for outdoor use. Orion Belt is flexible down to a 10" radius allowing mounting in any configuration. The solid-state light source and extended operating life allows for little or no maintenance in difficult to access environments. Orion belt ships factory cut to specified length based on cut intervals.



Part Number

- LED 135401
- 135401-1
- 135402
- 135403
- 135404
- 135405

Description

- LED white
- LED white warm
- LED blue
- LED green
- LED red
- LED amber

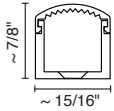
Technical

(White, Warm White, Blue and Green)
 1.25 Watt per foot
 75ft max length
 4.5" cut intervals
 (Red and Amber)
 0.75 Watt per foot
 126ft max length
 9" cut intervals
 24V DC constant voltage input
 Operating temperature between -4F through 140F
 Class II rated
 Suitable for outdoor use
 Dimmable (with dimming driver)

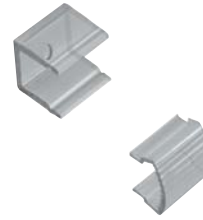


ORION MOUNTING CHANNEL

UV stabilized polycarbonite

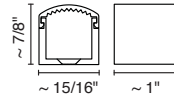


Part Number	Description
135912	■ translucent, 8'
135912-1	■ translucent, 4'



ORION BELT CLIP

UV stabilized polycarbonite

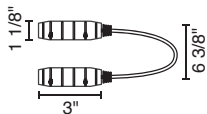


Part Number	Description
135914	■ translucent



ORION FLEXIBLE CONNECTOR

UV stabilized polycarbonite



Part Number	Description
135915	■ translucent

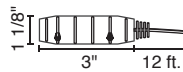
Technical

24V DC rated
96 Watt maximum thru-put
Class II rated
Suitable for outdoor use



ORION POWER FEED I

UV stabilized polycarbonite



Part Number	Description
135910	■ translucent

Technical

24V DC rated
96 Watt maximum thru-put
Class II rated
Suitable for outdoor use