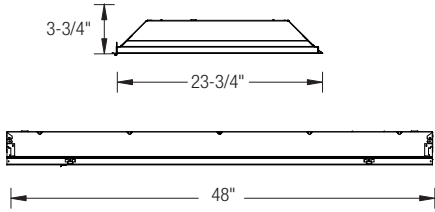
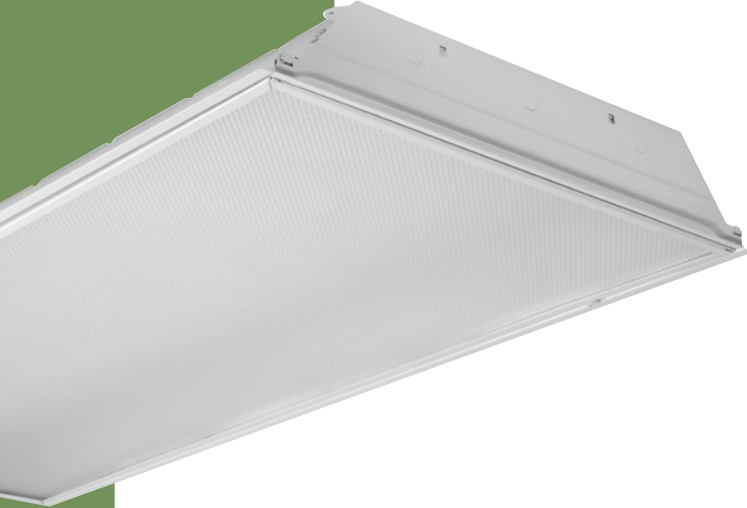


# T8/T5, 2' X 4' FLUORESCENT RECESSED SPECIFICATION GRADE TROFFER

OT  
Series



**APPLICATION:**  
General illumination for most commercial applications including schools, offices & retail spaces.

- PRODUCT FEATURES:**
- Up to 80% efficiency.
  - Mitered door frame prevents light leaks, and minimizes dust from entering fixture.
  - Constructed of one-piece ribbed unitized housing and corners that inter-lock, preventing aesthetic damage to luminaire.
  - Door frame is designed with cam latches and T hinges to secure frame to housing and allows for easy lamp maintenance.
  - Gasketed door frame prevents light leakage.
  - Clear 0.100" thick #12 pattern acrylic lens, standard.
  - Housing and door frame interface provides a superior mechanical light seal and hinges down for easy lamp replacement. Ballast can be accessed from below the ceiling.
  - Post Painted high gloss white powder coat finish maximizes distribution and efficiency while providing visual comfort.
  - All sides and corners are turned in and hemmed removing sharp edges for safe handling and installation.
  - Four corner tie points are standard for safety wire support when required. Built in earthquake clips standard.
  - Same day shipping on most options. Consult Factory.
  - Supplied standard with Philips Advance, GE or Universal ballast.
  - Wide Variety of dimming and daylight harvesting options available.
  - CEE qualified ballast found standard on most fixture options (Consult factory for details).
  - NEC required ballast disconnect is standard.
  - LISTING - UL/ C-UL listed to US and Canadian Standards.
  - WARRANTY - Guaranteed for one year against mechanical defects.

## Ordering Information EXAMPLE: 24-OT-3-32-T8-A12

<b>24</b>	<b>OT</b>								
<b>FIXTURE SIZE</b> 24 - 2' X 4'	<b>TRIM TYPE</b> (Blank)-Grid <i>(Consult factory for Slot T mounting option)</i>								
<b>SERIES</b> OT-Oracle Troffer	<b># LAMPS/LAMP TYPE</b>								
	<b>2-32-T8</b> (2 lamps/32W/T8) <b>3-32-T8</b> (3 lamps/32W/T8) <b>4-32-T8</b> (4 lamps/32W/T8)	<b>2-28-T5</b> (2 lamps/28W/T5) <b>3-28-T5</b> (3 lamps/28W/T5) <b>4-28-T5</b> (4 lamps/28W/T5) <b>2-54-T5HO</b> (2 lamps/54W/T5HO) <b>3-54-T5HO</b> (3 lamps/54W/T5HO) <b>4-54-T5HO</b> (4 lamps/54W/T5HO)							
	<i>(For other lamp type, please consult factory)</i>								
			<b>VOLTAGE<sup>3</sup></b>	<b># OF BALLAST</b>	<b>BALLAST FACTOR</b>			<b>LAMPS INSTALLED</b>	
			(Blank) - MVOLT (120/277) 120 277 347	(Blank) - 1 Ballast 2 - 2 Ballasts	(Blank) - Normal BF HBF - High BF LBF - Low BF			(Blank) - No lamps L30K - 30K L41K - 41K L35K - 35K L50K - 50K	
				<b>*MASTER/SATELLITE</b>				<b>DIFFUSER TYPE</b>	
				MAS1-Master fixture w/ 1 ballast & 11 ft. flex MAS2-Master fixture w/ 2 ballast & 11 ft. flex SAT-Satellite fixture w/o ballast <i>*must be ordered separately</i> EX: 24-OT-3-32-T8-MAS2 and 24-OT-3-32-T8-SAT				<b>A12</b> #12 pattern acrylic .10" thick <b>A125</b> #12 pattern acrylic .125" thick <b>A19</b> #19 pattern acrylic .156" thick <b>A15</b> #15 pattern acrylic .20" thick <b>ASW</b> Acrylic smooth .080" thick <b>PCL1</b> 5/8"X5/8"X3/8"plastic louvers <b>PCL2</b> 1-1/2"X1-1/2"X1" plastic louver <b>PCL3</b> 3/4"X3/4"X1/2" plastic louver <b>PCL4</b> 3"X3"X1-1/2" plastic louver	

BALLAST CONFIGURATION & CODE			
32W/T8	28W/T5	54W/T5HO	DESCRIPTION
(Blank)	-	-	Electronic Instant Start
EPS	(Blank) <sup>1</sup>	(Blank)	Electronic Program Start
ADV-7	-	ADV-7 <sup>1</sup>	Advance Mark-7 <sup>3</sup>
ADV-10 <sup>2</sup>	-	ADV-10 <sup>1</sup>	Advance Mark-10 <sup>3</sup>
-	ADV-OPT	-	Advance Optanium <sup>3</sup>
ADV-ESS <sup>2</sup>	-	-	Advance Essential <sup>3</sup>
ADV-ROVR	-	ADV-ROVR <sup>2</sup>	Advance Rover <sup>3</sup>
LUT-EHD <sup>2</sup>	LUT-EHD <sup>1</sup>	LUT-EHD <sup>1</sup>	Lutron Ecosystem H-Series <sup>3</sup>
LUT-2W <sup>1</sup>	-	-	Lutron Tu-Wire <sup>3</sup>
LUT-EC5 <sup>2</sup>	LUT-EC5 <sup>1</sup>	-	Lutron Ecosystem <sup>3</sup>
LUT-EC3 <sup>2</sup>	LUT-EC3 <sup>1</sup>	LUT-EC3 <sup>1</sup>	Lutron Eco-10 <sup>3</sup>
LUT-TVE <sup>1</sup>	-	-	Lutron Tve <sup>3</sup>
LUT-H3D <sup>2</sup>	LUT-H3D <sup>1</sup>	LUT-H3D <sup>1</sup>	Lutron Hi-Lume 3D <sup>3</sup>
-	-	LUT-ECD <sup>1</sup>	Lutron Ecosystem (347V Only) <sup>3</sup>

1- Requires 2 Ballasts for 3 or 4 lamps.  
2- Requires 2 Ballasts for 4 lamps.  
3- Voltage must be specified for dimming ballast.

EMERGENCY BATTERY PACK OPTIONS (L. = LUMENS)	
ORDER CODE	DESCRIPTION
EMG-T8-BX-450	Up to 450 L. for T8 or BX
EMG-T8-BX-600	Up to 600 L. for T8 or BX
EMG-T8-BX-700	Up to 700 L. for T8 or BX
EMG-T8-BX-1400	Up to 1400 L. for T8 or BX
EMG-T5-520	Up to 520 L. for T5
EMG-T5-T5HO-700	Up to 700 L. for T5 or T5HO
EMG-T5-T5HO-1300	Up to 1300 L. for T5 or T5HO
EMG-T8-BX-T5-T5HO-3200	Up to 3200 L. for T8, BX, T5 or T5HO
EMG-SD-T8-BX-T5-T5HO-1400	Self-Diagnostic 1400 L. for T8, BX, T5 or T5HO
EMG-ICE-T8-BX-T5-T5HO-1400	ICE Pack 1400 L. for T8, BX, T5 or T5HO

OTHER OPTIONS		
24FK	- Flange Kit for 2' X 4' Fixture	SBF - Internal Slow-Blow Fuse
C3	- 6' 3-wire Flex Cable (Single Circuit)	RIS - Radio Interference Suppressor
C4	- 6' 4-wire Flex Cable (Double Circuit)	USA - Made in America Compliance
FBF	- Internal Fast Blow Fuse	GDF - Gasketed Door Frame
24ALDF	- Aluminum Door frame	Special options are available

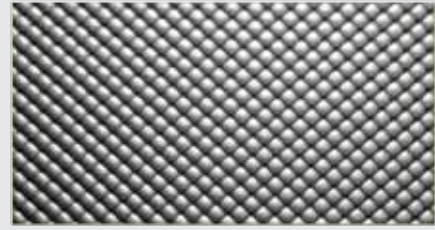
Fluorescent Recessed Specification Grade Troffer

## LENS AND DIFFUSER OPTIONS

### A-12/ FEMALE CONICAL PRISMATIC LENS

This quality extruded acrylic lens provides very good low brightness control with excellent light output. The lens utilizes a diagonally oriented prism pattern with square inversed prisms that are optically designed to provide excellent light control. The A12 pattern has become a standard in the industry offering economy with quality.

Thickness .100 (Part# A12) .125 (Part# A125)



### ASW-SMOOTH WHITE- STIPPLE FINISH

Smooth White Flat Sheet provides improved glare control and reduced lamp image. These extruded smooth and crepe diffusing panels are available in acrylic providing evenly illuminated lighting enclosures while reducing shadows and reflected glare.

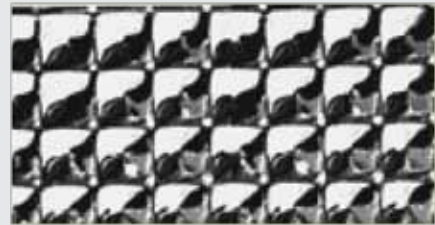
Thickness .080 (Part# ASW)



### A-15-FEMALE CONICAL PRISMATIC LENS

The 15 is an extruded acrylic lens with a large 3/8 square pattern design that renders a bold, well ordered look that hides the lamps from direct view. The recessed female conical pattern provides maximum strength to weight ratios for oversized areas up to 48" square. The lens is an ideal prismatic lens where the bolder prism pattern is desired.

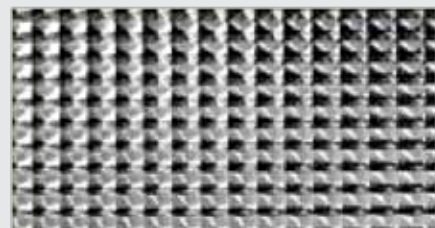
Thickness .200 (Part# A15)



### A-19- MALE CONICAL PRISMATIC LENS

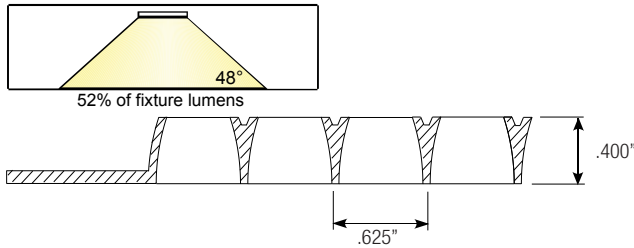
This is the finest in extruded acrylic lenses offering superior lamp obscuration and excellence source brightness control. The small square base male prisms are organized in a parallel pattern providing a discrete and tailored appearance. The 19 lens offers the crisp appearance and the optical precision often associated with injection molded lenses with the economies of the extruded lens.

Thickness .156 (Part# A19)

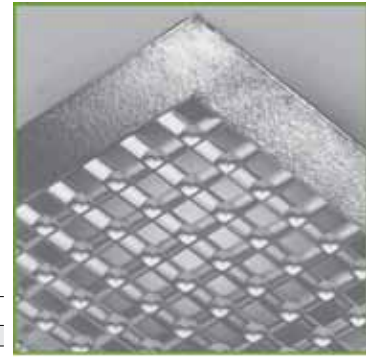


# PLASTIC LOUVER OPTIONS SILVER SPECULAR

**PCL1** is the internationally recognized industry standard small cell injection molded plastic parabolic louver. The fixture style parts include an integral flange that may be used full size or trimmed to achieve lesser overall dimensions. The style 4X is molded to a generic size that fits many fixtures without trimming.

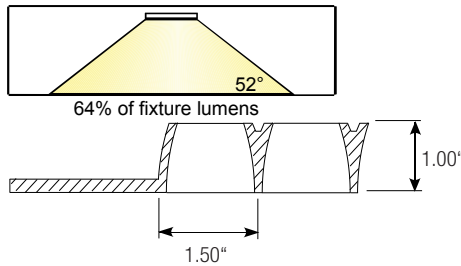


VCP-Ceiling		
HEIGHT	MEAN	MODE
8.5'	.99	.99
10'	.98	.98

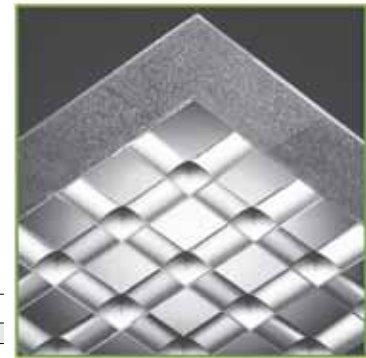


5/8"X5/8"X3/8" plastic louvers

**PCL2** is the industry standard 1-1/2" x 1-1/2" x 1" (38 x 38 x 25,4mm) injection molded plastic parabolic louver. This internationally accepted product satisfies the demands of both efficiency and luminance control. Molded in a number of configurations PCL2 is adaptable to a wide range applications. Style 5 louvers have smaller body dimensions and are designed to accommodate smaller overall sizes and some difficult to fit fixtures.

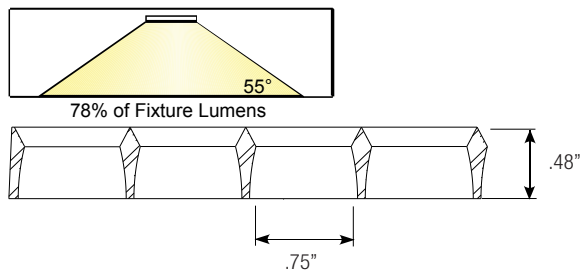


VCP-Ceiling		
HEIGHT	MEAN	MODE
8.5'	.98	.99
10'	.99	.99

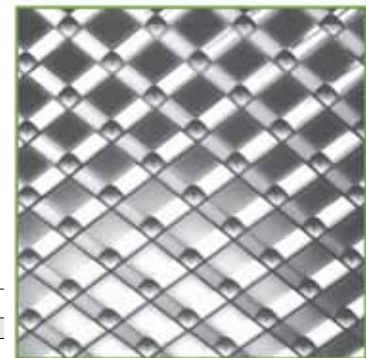


1-1/2"X1-1/2"X1" plastic louver

**PCL3** with mid-sized 3/4" x 3/4" x 1/2" (19 x 19 x 12,2mm) cells provide 35 degree shielding and maintains energy saving efficiencies. PCL3 reflects our commitment to high efficiency louvers by offering not only an unsurpassed optically engineered wedge back design but also the molded louver configurations that will maximize energy budgeted applications. For the world market PCL3 is molded in a versatile unflanged metric panel



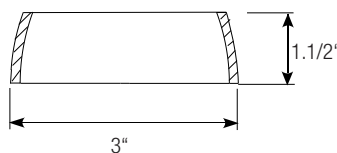
VCP-Ceiling		
HEIGHT	MEAN	MODE
8.5'	.95	.97
10'	.91	.93



3/4"X3/4"X1/2" plastic louver

**PCL4** combines superior beauty, light control and the highest light transmission in a plastic louver. This larger cell louver offers the highest efficiency and coefficient of utilization of any member of the PCL4 family. The PCL4 is ideal in high ceiling applications, offices with greater spacing between light fixtures, corridors, public and general offices, and retail merchandising applications where "light for selling" is critical.

- Outstanding for use where broader Light distribution is desired
- Luminaire Efficiency to 67.8%
- Coefficient of Utilization to .74
- Visual Comfort Probability to 88



3"X3"X1-1/2" plastic louver