

# ARCHITECTURAL CHANNEL LS LOW VOLTAGE SERIES

Lightweight, aluminum channel using  
Litesphere LED strand lights.

CAT:	FEET:
TYPE:	PROJECT:

## FEATURES

- Lightweight, aluminum alloy extruded channel in four standard finishes: Polished Aluminum, Satin Aluminum, Powder Coated White or Powder Coated Black; Custom paint or anodizing available, consult factory
- 2 1/8" x 2 1/8" Standard or 2 1/8" x 1 1/4" Medium Profile extrusions available in 12' max lengths with 6", 12", 18" and 24" OC standard spacing
- Energy-efficient, low voltage LED strand lighting using wedge-base LED lamps protected by clear, frosted or colored polycarbonate globes
- Smooth full range dimming capability with commercially available ELV (electronic low voltage), MLV (magnetic low voltage) or 0V to 10V Dimming Controls

## SPECIFICATIONS

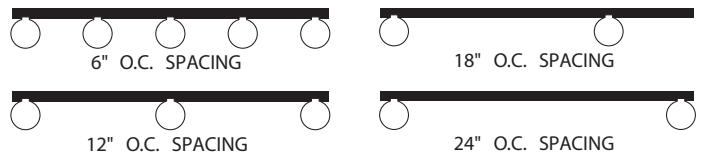
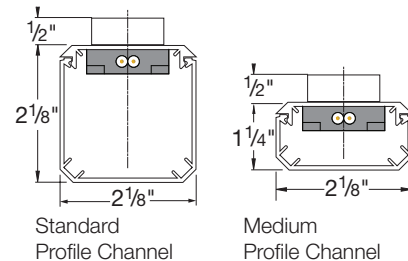
LED DATA	WATTAGE	LED LIFE / COLOR TEMP	VIEWING ANGLE
Architectural Channel LS Series LED	0.48W per LED*	<b>40,000 hrs.</b> Green or Blue  <b>100,000 hrs.</b> Red, Orange or Yellow  <b>40,000 hrs.</b> White or Warm White	180°

\*Ultra Bright Triple Chip LEDs operate at 52% of LED manufacturers maximum current spec rating.



1. **Spacing** - Lamp spacing: 6", 12", 18", 24" OC Custom lamp spacing available - Consult factory
2. **LEDs** - Uses 0.48W Triple Chip wedge-base LEDs lamps
3. **LED Colors** - Red, Yellow, Green, Blue, White, Warm White
4. **Globes** - Shatterproof polycarbonate O-ring fitted globes, protect lamps with clarity and seamless appearance available in Clear, Frosted, Yellow, Red, Orange, Green, Blue and Purple
5. **Socket** - Socket is parallel wired and permanently fixed to cable
6. **Installation** - May not be suited for high salt air environments - Consult Factory
7. **Power Supply** - Listed Class I or Class II 12V DC power supply required
8. **Listing** - cULus listed for indoor or outdoor Class I or Class II applications
9. **Warranty** - 3 Year Warranty

## PROFILES



## ARCHITECTURAL CHANNEL LS SERIES LED

### ORDER SPECIFICATION GUIDE

Example: AC-LS-B-06-WH-WW-F

PRODUCT CODE	WIRE	SOCKET	LAMP SPACING	FINISH	LED COLOR	GLOBE COLOR	REQUIRED POWER SUPPLY
-	LS	-	-	-	-	-	+ PSU
AC = Standard Architectural Channel	LS = Litesphere Socket	B = Black W = White	06 = 6" OC 12 = 12" OC 18 = 18" OC 24 = 24" OC	PA = Polished Aluminum SA = Satin Aluminum BK = Black Powder Coat WH = White Powder Coat	BL = Blue GR = Green RD = Red YL = Yellow WH = White WW = Warm White	C = Clear F = Frosted Y = Yellow R = Red O = Orange G = Green B = Blue P = Purple Z = Varied Colors*	See power supply specsheets

### REQUIRED POWER SUPPLY OPTIONS

- ADNM-80-1-5-12-D
- ADNM-150-2-5-12-D
- ADNM-240-3-5-12-D
- ADNM-320-4-5-12-D
- ADNM-240-1-15-12-D
- JT-60-1-5-12-D
- JTH-60-1-5-12-D
- JT-240-4-5-12-D
- JTH-240-4-5-12-D
- MW-80-1-5-12-D
- MW-150-1-10-12-D
- MW-240-1-15-12-D
- MW-320-1-20-12-D

### OPTIONAL DIMMERS

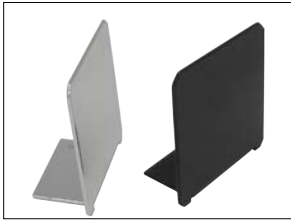
- N-600
  - NH-600
  - N-1000
  - NH-1000
  - N-1500
  - DIM-OT-1-5-D
- See dimming specification sheet for more information

See power supply specifications for more information



# ARCHITECTURAL CHANNEL LS LOW VOLTAGE SERIES

## MOUNTING ACCESSORIES

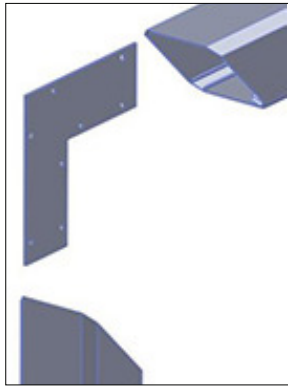


### END CAPS - STANDARD PROFILE

**AC-EC-SA** Satin Aluminum  
**AC-EC-PA** Polished Aluminum  
**AC-EC-PW** Powder Coated White  
**AC-EC-PB** Powder Coated Black

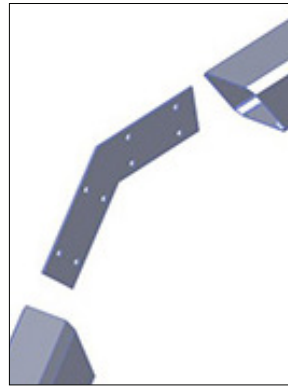
### END CAPS - MEDIUM PROFILE

**AM-EC-SA** Satin Aluminum  
**AM-EC-PA** Polished Aluminum  
**AM-EC-PW** Powder Coated White  
**AM-EC-PB** Powder Coated Black



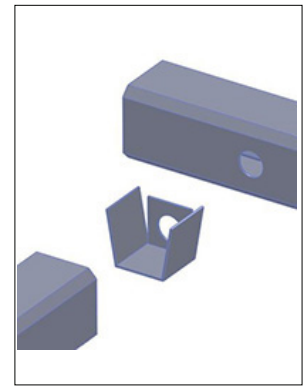
### INTERNAL 90° BRACKET

**AC-90** Flat 90 (Standard)  
**AM-90** flat 90 (Low Profile)

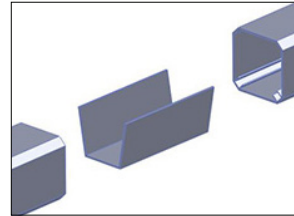


### INTERNAL 45° BRACKET

**AC-45** 45° Bracket (Standard)  
**AM-45** 45° Bracket (Low Profile)

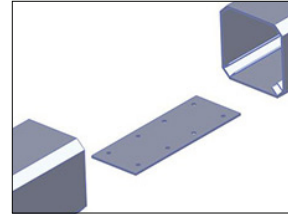


**INTERNAL T-BRACKET**  
**AC-T** T Bracket (Standard)



### INTERNAL BUTT CONNECTOR

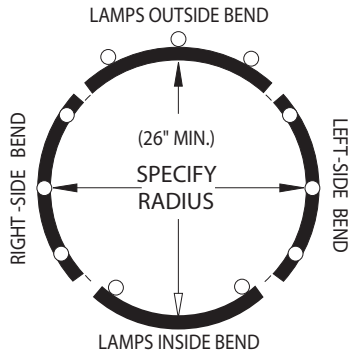
**AC-IBC** Butt Connector (Standard)  
*Note: Medium Profile uses same Bracket*



### INTERNAL CONNECTOR

**AC-180** Internal Connector (Standard)  
**AM-180** Internal connector (Low Profile)

## RADIUS CONFIGURATIONS

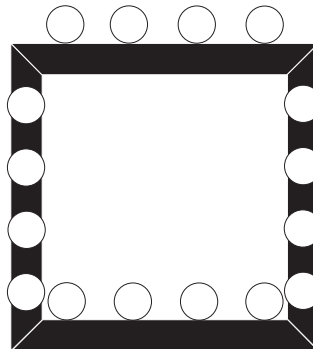


Consult factory for radius options

### RADIUS CHARGES

**RADIUS** Radius bend set up charge (Over 3' Radius)  
**RADIUS-3** Radius bend set up charge (Under 3' Radius)  
**R-UNITS** Radius unit charge, Per 8' Max length  
**AC-RADIUS** Internal Bracket (Standard Channel)  
**AM-RADIUS** Internal Bracket (Medium Channel)

## FACTORY MITERS



NOTE: Dimensional drawings with lamp orientation required.

**AC-MITER** Factory Miter Cut  
 Standard Profile  
**AL-MITER** Factory Miter Cut  
 Low Profile

## ACCESSORIES & REPLACEMENTS



### REPLACEMENT GLOBES

**LS-CG** Clear  
**LS-FG** Frosted  
**LS-YG** Yellow  
**LS-RG** Red  
**LS-OG** Orange  
**LS-GG** Green  
**LS-BG** Blue  
**LS-PG** Purple



0.48W  
 Triple Chip LED

### REPLACEMENT LEDS

**LSL-BL-F-12** 0.48W, 12V Wedge base  
 Frosted LED - Blue  
**LSL-GR-F-12** 0.48W, 12V Wedge base  
 Frosted LED - Green  
**LSL-RD-F-12** 0.48W, 12V Wedge base  
 Frosted LED - Red  
**LSL-YL-F-12** 0.48W, 12V Wedge base  
 Frosted LED - Yellow  
**LSL-WH-F-12** 0.48W, 12V Wedge base  
 Frosted LED - White  
**LSL-WW-F-12** 0.48W, 12V Wedge base  
 Frosted LED - Warm White



# ARCHITECTURAL CHANNEL LS LOW VOLTAGE SERIES

## RECOMMENDED POWER SUPPLIES

CAT NO	PRIMARY AND SECONDARY	TOTAL WATTAGE / AMPERAGE PER BREAKER	LISTING	DIMENSIONS	ELECTRONIC OR AC MAGNETIC	DIMMABLE (Y OR N)
ADNM-80-1-5-12-D	90-305V AC / 12V DC	60W / 1X5A	cULus	12"W X 12"L X 4"D	Electronic	Y: F
ADNM-150-2-5-12-D	90-305V AC / 12V DC	120W / 2X5A	cULus	12"W X 12"L X 4"D	Electronic	Y: F
ADNM-240-3-5-12-D	90-305V AC / 12V DC	180W / 3X5A	cULus	12"W X 12"L X 4"D	Electronic	Y: F
ADNM-320-4-5-12-D	90-305V AC / 12V DC	240W / 4X5A	cULus	12"W X 12"L X 4"D	Electronic	Y: F
ADNM-240-1-15-12-D	90-305V AC / 12V DC	180W / 1X15A	cULus	12"W X 12"L X 4"D	Electronic	Y: F
JT-60-1-5-12-D	120V AC / 12V DC	60W / 1X5A	cETLus	4.25"W X 8.50"L X 3.25"D	Magnetic	Y: A, C, E & F
JTH-60-1-5-12-D	277V AC / 12V DC	60W / 1X5A	cETLus	4.25"W X 8.50"L X 3.25"D	Magnetic	Y: B, D & F
JT-240-4-5-12-D	120V AC / 12V DC	240W / 4X5A	cETLus	8.50"W X 16.00"L X 4.50"D	Magnetic	Y: A, C, E & F
JTH-240-4-5-12-D	277V AC / 12V DC	240W / 4X5A	cETLus	8.50"W X 16.00"L X 4.50"D	Magnetic	Y: B, D & F
MW-80-1-5-12-D	90-305V AC / 12V DC	60W / 1X5A	UL/CE	7.75"W X 2.50"L X 1.63"D	Electronic	Y: F
MW-150-1-10-12-D	90-305V AC / 12V DC	120W / 1X10A	UL/CE	9.00"W X 2.75"L X 1.63"D	Electronic	Y: F
MW-240-1-15-12-D	90-305V AC / 12V DC	180W / 1X15A	UL/CE	9.75"W X 2.75"L X 1.63"D	Electronic	Y: F
MW-320-1-20-12-D	90-305V AC / 12V DC	240W / 1X20A	UL/CE	10.00"W X 3.63"L X 1.75"D	Electronic	Y: F

## DIMMERS

SELECTOR	DIMMER	TYPE	CONTROL SIGNAL	INPUT VOLTAGE	OUTPUT VOLTAGE	MAX LOAD	BREAKER RATING	DIMENSIONS
A	N-600	AC Magnetic	N/A	120V AC	120V AC	450W	N/A	Recessed Single Gang Box
B	NH-600	AC Magnetic	N/A	277V AC	277V AC	450W	N/A	Recessed Single Gang Box
C	N-1000	AC Magnetic	N/A	120V AC	120V AC	800W	N/A	Recessed Dual Gang Box
D	NH-1000	AC Magnetic	N/A	277V AC	277V AC	800W	N/A	Recessed Dual Gang Box
E	N-1500	AC Magnetic	N/A	120V AC	120V AC	1200W	N/A	Recessed DUal Gang Box
F	DIM-OT-1-5-D	Control Interface	0-10V DC	12V DC	12V DC	60W	5A*	7"L X 1½"W X ¾"H

DIM-OT is a full range control interface that receives dimming signal from various controllers (0-10V DC). Consult factory for more information.

\*DIM-OT applications require 1 each DIM-OT per 5 amp circuit

## PRODUCT SPECIFICATION GUIDE

SPACING	WATTS PER FOOT	PRODUCT MAX CIRCUIT LIMITATIONS (Ft/LED's PER SECONDARY CIRCUIT)	MAX INTERCONNECTABLE RUN LENGTHS
6" O.C.	.96W/ft	150' 300 LEDs per 15A Class I circuit 65' 135 LEDs per 5A Class II circuit	90' 65'
12" O.C.	.48W/ft	300' 300 LEDs per 15A Class I circuit 135' 135 LEDs per 5A Class II circuit	150' 135'
18" O.C.	.36W/ft	450' 300 LEDs per 15A Class I circuit 200' 135 LEDs per 5A Class II circuit	150' 150'
24" O.C.	.24W/ft	600' 300 LEDs per 15A Class I circuit 270' 135 LEDs per 5A Class II circuit	150' 150'

