

# Vanity Light VL Series

Page 1 of 2

4-3/4" Wide , 24", 36" or 48" Lengths  
1 Lamp T8

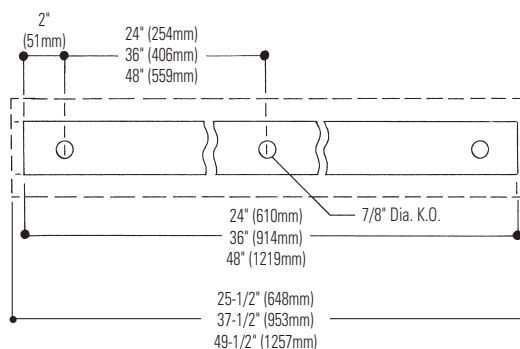
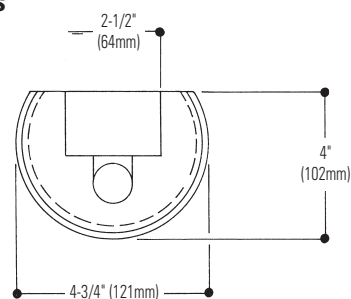
- Can be horizontally or vertically mounted.
- 4-3/4" diameters opal white acrylic lens.
- Positive stainless steel lens retainers.
- Permanently installed milk white opaque diffuser ends with decorative trim.
- Efficiency 76.6% (T8).
- Quarter turn latch secures channel cover for easy wireway access.
- Heavy duty channel of code gauge die formed steel.
- Fully enclosed wireway.
- UL Listed snap-on end caps (body).
- Green grounding screw installed in channel.



## Features



## Dimensions



## Job Information Type:

**Job Name:**

**Cat. No.:**

**Lamp(s):**

**Volts/Ballast:**

# Vanity Light VL Series

4-3/4" Wide, 24", 36" or 48" Lengths  
1 Lamp T8

Page 2 of 2

## Chassis

### Model No. N132-UNV-1/1-EB

with shielding VLW4X48

LER = FP - 68.2 IW - 29.6 BF - 0.92  
Comparative yearly lighting energy cost per  
1000 lumens = \$3.52

Report Number: G2005214  
Lamp: F32/T8 TL841  
Luminaire: 4" Vanity Light, with 4-3/4" wide  
milk white acrylic lens  
Ballast: 1X32/T8  
Report is based on 2850 Lumens per lamp.  
Efficiency: 76.6%  
CIE Type: Direct-Indirect  
Plane: 0-Deg 90-Deg  
Spacing Criteria: 1.2 1.4  
Shielding Angles: 90 90

### CANDELA DISTRIBUTION

	0.0	45.0	90.0	FLUX
0	475	475	475	
5	470	474	478	45
15	452	459	467	130
25	418	432	446	200
35	370	394	418	247
45	310	349	385	269
55	239	299	347	265
65	160	246	307	238
75	78	196	265	196
85	13	151	224	151
90	4	132	204	
95	4	118	188	119
105	6	91	153	92
115	18	73	122	71
125	24	61	97	53
135	28	49	77	40
145	36	37	55	27
155	44	55	42	21
165	51	35	54	12
175	55	35	39	4
180	53	53	53	

### COEFFICIENTS OF UTILIZATION – ZONAL CAVITY METHOD. EFFECTIVE FLOOR CAVITY REFLECTANCE 0.20

RC	80	30	50	10	30	10
1	78	69	64	61	58	58
2	70	63	57	55	50	46
3	63	54	48	47	42	38
4	58	48	41	42	36	32
5	53	42	35	37	32	27
6	49	38	31	33	28	24
7	45	34	27	30	25	21
8	42	31	25	28	22	18
9	39	28	22	25	20	16
10	36	26	20	23	18	14

### ZONAL LUMEN SUMMARY

ZONE	LUMENS	% LAMP	% FIXT
0- 30	375	13.2	17.2
0- 40	622	21.8	28.5
0- 60	1157	40.6	53.0
0- 90	1743	61.2	79.9
90-120	282	9.9	12.9
90-130	335	11.7	15.3
90-150	403	14.1	18.4
90-180	440	15.4	20.1
0-180	2183	76.6	100.0

### LUMINANCE DATA IN CANDELA/SQ. METER

AVERAGE IN DEG.	AVERAGE 0-DEG.	AVERAGE 45-DEG.	AVERAGE 90-DEG.
45	2586.	2180.	1922.
55	2382.	2035.	1793.
65	2058.	1903.	1697.
75	1478.	1819.	1629.
85	496.	1822.	1605.

## Ordering Information

**NOTE:** Chassis and shielding are packed in separate cartons. When ordering, enter as separate line items.

Length	Shielding	Chassis	Lamp	Ballast
2'	VLW4X24	N117-UNV-1/1EB	1-T8	1 Lamp Elec. T8
3'	VLW4X36	N125-UNV-1/1EB	1-T8	1 Lamp Elec. T8
4'	VLW4X48	N132-UNV-1/1EB	1-T8	1 Lamp Elec. T8

**NOTE:** Chassis and shielding shown are stock items.

**NOTE:** UNV =120-277.

## Specifications

**Materials: Chassis parts** are die-formed heavy gauge code cold rolled steel, 1-13/16" deep, 2-1/2" wide.

**Ballast Cover:** Code gauge steel secured with 1/4 turn fasteners, for easy wireway access.

**Finish: Chassis exterior**—exterior phosphate undercoating, baked white polyester enamel.

**Lens:** 4-3/4" diameter opal white acrylic with permanently installed opal white opaque diffuser ends with decorative trim.

**Electrical:** Thermally protected class "P" ballast, <10% THD non PCB. If K.O. is within 3" of ballast, use wire suitable for at least 90°.

**Labels:** I.B.E.W./UL and ULc Listed.

This product may have a mercury containing lamp.

Manage in accord with Disposal Laws. See: [www.lamprecycle.org](http://www.lamprecycle.org)

## Job Information

## Type:



© 2014 Koninklijke Philips N.V. All rights reserved.  
Specifications are subject to change without notice.  
[www.philips.com/luminaires](http://www.philips.com/luminaires)

VLW\_VANITY\_LIGHT 04/14

Philips Lighting  
North America Corporation  
200 Franklin Square Drive  
Somerset, NJ 08873  
Phone: 855-486-2216

Philips Lighting Company  
281 Hillmount Road  
Markham ON, Canada L6C 2S3  
Phone: 800-668-9008