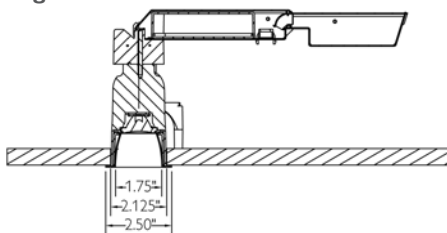




Calculate LED 1 3/4" aperture

Round downlight



How to specify

Light engine/Frame-in kit	CCT	Beam spread	Installation/input voltage	Reflector
C2L04DL	30K	12	R1	C2LDLWHW (Downlight) C2LLWWHW (Wall washer)

Beam spread options		Reflector finish options			Ordering guide: installation accessories	
Beam spread	Code	Reflector finish	Aperture - matching flange	Flangeless	Accessories-installation	Lumen package (nominal)
12 Degree	12	Comfort clear diffuse	CCDP	CCDFT	CA2FMR	Round aperture flush-mount mud-in ring*
17 Degree	17	White	WHW	WHFT	CA2X2FMR	Square aperture flush-mount mud-in ring*
25 Degree	25	Champagne bronze	CCZP	CCZFT	C2LIC	IC frame (new construction)*
38 Degree	38	Black	BKP	BKFT	C2LMP	New construction mounting pan*
* Recommended for specific applications						

Trim/frame compatibility

Aperture	Light engine /Frame-in kit	Description	Ceiling cutout		Input voltage	Technology	Wattage	Length	Width	Height
			Type	Type						

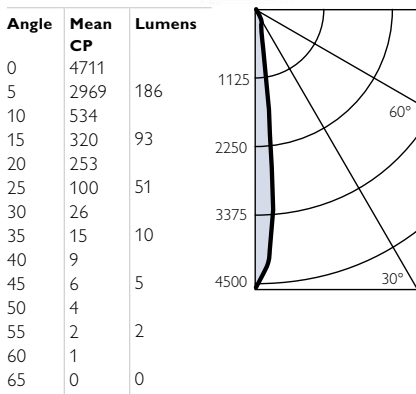
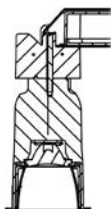
1.75" Flanged										
	C2L04DL30K12R1	400 Lumen downlight, 3000K, 12 Degree beam	2 1/8"	Non-IC	120V	White Light LED	See specification sheet	10.25"	4.25"	5.25"
	C2L04DL30K17R1	400 Lumen downlight, 3000K, 17 Degree beam	2 1/8"	Non-IC	120V	White Light LED	See specification sheet	10.25"	4.25"	5.25"
	C2L04DL30K25R1	400 Lumen downlight, 3000K, 25 Degree beam	2 1/8"	Non-IC	120V	White Light LED	See specification sheet	10.25"	4.25"	5.25"
	C2L04DL30K38R1	400 Lumen downlight, 3000K, 38 Degree beam	2 1/8"	Non-IC	120V	White Light LED	See specification sheet	10.25"	4.25"	5.25"

* For flangeless, add "FT". Example: C2L04DLFT30K12R1. CA2FMR flangeless accessory ring recommended for gypsum installations.

**** As Calculate LED fixture efficiency is continuously improving, please see product specification sheet for updated, accurate performance data.**

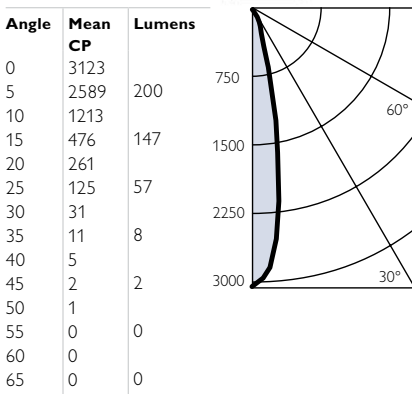
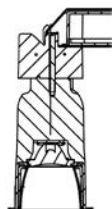
1 3/4", 400 Lumen, round, 12°

Reflector trim: C2L04DL30K11R1/C2LDLCCDW
Output lumens: 347
Center beam candlepower: 4711
Correlated color temp: 3000K



1 3/4", 400 Lumen, round, 17°

Reflector trim: C2L04DL30K17R1/C2LDLCCDW
Output lumens: 414
Center beam candlepower: 3123
Correlated color temp: 3000K



1 3/4", 400 Lumen, round, 25°

Reflector trim: C2L04DL30K25R17R1/C2LDLCCDW
Output lumens: 348
Center beam candlepower: 1517
Correlated color temp: 3000K

