



## QuickShip

*Expedited production of commonly used Williams products – ready to ship within 48 hours.*



H.E. WILLIAMS, INC.

# QuickShip Products

## QuickShip Program

- ◆ QuickShip orders must consist of QuickShip items ONLY to ship in 48 hours from time of order entry at factory.
- ◆ "QuickShip" MUST be referenced in the subject line on all requests.
- ◆ Standard freight terms apply.

### RECESSED FLUORESCENT



#### DI 2' x 2'

- **DIG-S22-240TT-WPR-QS-EB2-UNV**  
Direct/Indirect, White Perf. Round Diffuser, 2'x2', 2-Lamp, T8 Elec. Ballast, Univ. Volt



#### DI 2' x 4'

- **DIG-S24-232-WPR-QS-EB2\*AD-BD-UNV**  
Direct/Indirect, White Perf. Round Diffuser, 2'x4', 2-Lamp, T8 Elec. Ballast, Univ. Volt
- **DIG-S24-332-WPR-QS-EB3\*AD-BD-UNV**  
Direct/Indirect, White Perf. Round Diffuser, 2'x4', 3-Lamp, T8 Elec. Ballast, Univ. Volt



#### LPT 2' x 2'

- **LPT-22-232U-SA12100-QS-EB2\*AD-BD-UNV**  
Lensed Troffer, 2'x2', 2 U-Lamps, Acrylic Lens, T8 Elec. Ballast, Univ. Volt



#### LPT 2' x 4'

- **LPT-24-232-SA12100-QS-EB2\*AD-BD-UNV**  
Lensed Troffer, 2'x4', 2-Lamp, Acrylic Lens, T8 Elec. Ballast, Univ. Volt
- **LPT-24-332-SA12100-QS-EB3\*AD-BD-UNV**  
Lensed Troffer, 2'x4', 3-Lamp, Acrylic Lens, T8 Elec. Ballast, Univ. Volt
- **LPT-24-332-SA12100-(3)F032/835/ECO F&I-QS-EB3\*AD-BD-UNV**  
Lensed Troffer, 2'x4', 3-Lamp, Acrylic Lens, Lamped, T8 Elec. Ballast, Univ. Volt
- **LPT-24-332-SA12100-QS-EB2/1\*AD-BD-UNV**  
Lensed Troffer, 2'x4', 3-Lamp, Acrylic Lens, (2) T8 Elec. Ballast, Univ. Volt
- **LPT-24-332-SA12100-(3)F032/835/ECO F&I-QS-EB2/1\*AD-BD-UNV**  
Lensed Troffer, 2'x4', 3-Lamp, Acrylic Lens, Lamped, (2) T8 Elec. Ballast, Univ. Volt
- **LPT-24-432-SA12100-QS-EB4\*AD-BD-UNV**  
Lensed Troffer, 2'x4', 4-Lamp, Acrylic Lens, T8 Elec. Ballast, Univ. Volt
- **LPT-24-432-SA12100-(4)F032/835/ECO F&I-QS-EB4\*AD-BD-UNV**  
Lensed Troffer, 2'x4', 4-Lamp, Acrylic Lens, Lamped, T8 Elec. Ballast, Univ. Volt
- **LPT-24-432-SA12100-QS-EB2/2\*AD-BD-UNV**  
Lensed Troffer, 2'x4', 4-Lamp, Acrylic Lens, (2) T8 Elec. Ballast, Univ. Volt
- **LPT-24-432-SA12100-(4)F032/835/ECO F&I-QS-EB2/2\*AD-BD-UNV**  
Lensed Troffer, 2'x4', 4-Lamp, Acrylic Lens, Lamped, (2) T8 Elec. Ballast, Univ. Volt

# QuickShip Products

## PARABOLIC | WALL MOUNT | WRAP AROUND



### HE3 2' x 4'

- **HE3G-D24-332-36S-L/WWC-QS-EB3\*AD-BD-UNV**  
Parabolic, 2'x4', 3-Lamp, 18-Cell, T8 Elec. Ballast, Univ. Volt



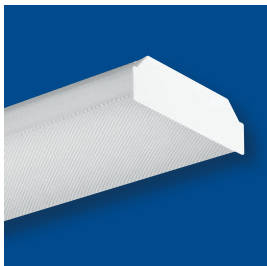
### HE3 2' x 2'

- **HE3G-D22-232U-33S-QS-EB2\*AD-BD-UNV**  
Parabolic, 2'x2', 2 U-Lamps, 9-Cell, T8 Elec. Ballast, Univ. Volt



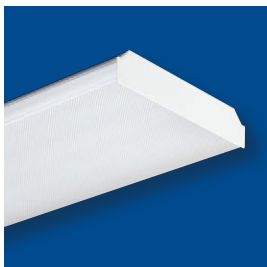
### 29

- **29-4-232-A-QS-EB2\*AD-BD-UNV**  
Wall Mount, Up/Down, 4', 2-Lamp, Acrylic Lens, T8 Elec. Ballast, Univ. Volt



### 17

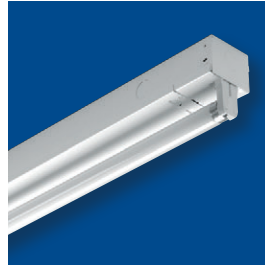
- **17-4-232-A-QS-EB2\*AD-BD-UNV**  
Wrap Around, 4', 2-Lamp, Acrylic Lens, T8 Elec. Ballast, Univ. Volt



### 18

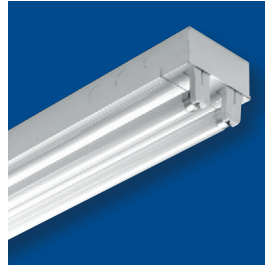
- **18-4-432-A-QS-EB4\*AD-BD-UNV**  
Wrap Around, 4', 4-Lamp, Acrylic Lens, T8 Elec. Ballast, Univ. Volt

## STRIPS | INDUSTRIALS



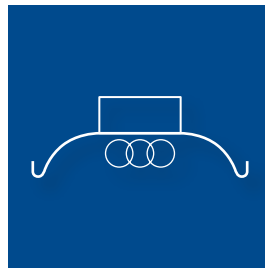
### 75

- **75-4-132-QS-EB1\*AD-BD-UNV**  
Strip, 4', 1-Lamp, T8 Elec. Ballast, Univ. Volt



### 76

- **76-4-232-QS-EB2\*AD-BD-UNV**  
Strip, 4', 2-Lamp, T8 Elec. Ballast, Univ. Volt
- **76-8-259-QS-EB2\*AD-BD-UNV**  
Strip, 8', 2-Lamp, T8 Elec. Ballast, Univ. Volt
- **76-8-432-QS-EB4\*AD-BD-UNV**  
Strip, 8', 4-Lamp, T8 Elec. Ballast, Univ. Volt



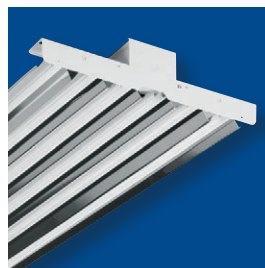
## R1240 REFLECTOR

- **R1240-4 REFLECTOR**  
Symmetric Reflector for Strips



## GL

- **GL-4-454T5H-(4)F54/41K F&I-(2)VBY-QS-EB4\*AD-BD-UNV**  
Industrial, Fluor. Hi-Bay, 4', 4-Lamp, Lamped, T5 Elec. Ballast, Univ. Volt
- **GL-4-454T5H-(2)VBY-QS-EB4-BD-UNV**  
Industrial, Fluor. Hi-Bay, 4', 4-Lamp, T5 Elec. Ballast, Univ. Volt
- **GL-4-654T5H-(6)F54/41K F&I-(2)VBY-QS-EB4/2\*AD-BD-UNV**  
Industrial, Fluor. Hi-Bay, 4', 6-Lamp, Lamped, (2) T5 Elec. Ballast, Univ. Volt
- **GL-4-654T5H-(2)VBY-QS-EB4/2-BD-UNV**  
Industrial, Fluor. Hi-Bay, 4', 6-Lamp, (2) T5 Elec. Ballast, Univ. Volt
- **GL-4-632-(6)F032/841/ECO F&I-(2)VBY-QS-EBHW3/3\*AD-BD-UNV**  
Industrial, Fluor. Hi-Bay, 4', 6-Lamp, Lamped, (2) T8 High Wattage Elec. Ballast, Univ. Volt
- **GL-4-632-(2)VBY-QS-EBHW3/3-BD-UNV**  
Industrial, Fluor. Hi-Bay, 4', 6-Lamp, (2) T8 High Wattage Elec. Ballast, Univ. Volt

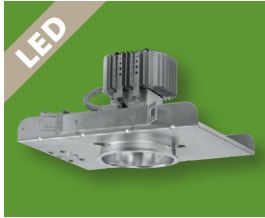


## HL

- **HL-4-454T5H-MD-(2)VBY-QS-EB4\*AD-BD-UNV**  
Industrial, Channel Hi-Bay, 4', 4-Lamp, T5 Elec. Ballast, Univ. Volt
- **HL-4-654T5H-MD-(2)VBY-QS-EB4/2\*AD-BD-UNV**  
Industrial, Channel Hi-Bay, 4', 6-Lamp, T5 Elec. Ballast, Univ. Volt
- **HL-4-632-MD-(2)VBY-QS-EB4/2\*AD-BD-UNV**  
Industrial, Channel Hi-Bay, 4', 6-Lamp, (2) T8 Elec. Ballast, Univ. Volt

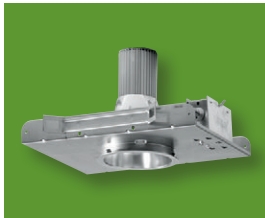
# QuickShip Products

## DOWNLIGHTING



### LED60

- **LED60-OS11/835-CS-QS-EDD\*OS-120**  
Recessed LED Downlight, 6" Round, 1100 Lumen, Clear Semi-specular Reflector, 0-10V Dimming, 120-Volt
- **LED60-OS11/835-CS-QS-EDD\*OS-277**  
Recessed LED Downlight, 6" Round, 1100 Lumen, Clear Semi-specular Reflector, 0-10V Dimming, 277-Volt
- **LED60-OS20/835-CS-QS-EDD\*OS-120**  
Recessed LED Downlight, 6" Round, 2000 Lumen, Clear Semi-specular Reflector, 0-10V Dimming, 120-Volt
- **LED60-OS20/835-CS-QS-EDD\*OS-277**  
Recessed LED Downlight, 6" Round, 2000 Lumen, Clear Semi-specular Reflector, 0-10V Dimming, 277-Volt



### PV60

- **PV60-1-26/32/42T-CS-QS-EB1-UNV**  
Recessed Fluorescent Vertical Downlight, 6" Round, Clear Semi-specular Reflector, (1)26/32/42T Elec. Ballast, Univ. Volt
- **PV60-1-26/32/42T-EB-CS-EM94CGU/1-QS-EB1-UNV**  
Recessed Fluorescent Vertical Downlight, 6" Round, Clear Semi-specular Reflector, EM-(1)26/32/42T Elec. Ballast, Univ. Volt



### PH60

- **PH60-226Q-CS-QS-EB2-UNV**  
Recessed Fluorescent Horizontal Downlight, 6" Round, Clear Semi-specular Reflector, (2)26Q Elec. Ballast, Univ. Volt
- **PH60-226Q-CS-EM94CGU/1-QS-EB2-UNV**  
Recessed Fluorescent Horizontal Downlight, 6" Round, Clear Semi-specular Reflector, EM-(2)26Q Elec. Ballast, Univ. Volt



### PV75

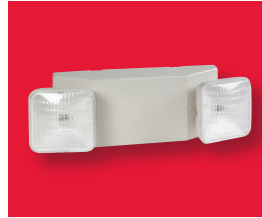
- **PV75-1-26/32/42T-CS-QS-EB1-UNV**  
Recessed Fluorescent Vertical Downlight, 7.5" Round, Clear Semi-specular Reflector, (1)26/32/42T Elec. Ballast, Univ. Volt
- **PV75-1-26/32/42T-CS-EM94CGU/1-QS-EB1-UNV**  
Recessed Fluorescent Vertical Downlight, 7.5" Round, Clear Semi-specular Reflector, EM-(1)26/32/42T Elec. Ballast, Univ. Volt



### PH75

- **PH75-226Q-CS-QS-EB2-UNV**  
Recessed Fluorescent Horizontal Downlight, 7.5" Round, Clear Semi-specular Reflector, (2)26Q Elec. Ballast, Univ. Volt
- **PH75-226Q-CS-EM94CGU/1-QS-EB2-UNV**  
Recessed Fluorescent Horizontal Downlight, 7.5" Round, Clear Semi-specular Reflector, EM-(2)26Q Elec. Ballast, Univ. Volt

## EMERGENCY & EXIT



### EMER

- **EMER-WHT-QS-D**  
Emergency Lighting Unit, Industry-standard White, Dual Voltage



### EXIT (GREEN)

- **EXIT-G-AC-WHT-QS-D**  
LED Exit Sign, Green, AC Dual Voltage, Industry-standard White
- **EXIT-G-EM-WHT-QS-D**  
LED Exit Sign, Green, EM Dual Voltage, Industry-standard White



### EXIT (RED)

- **EXIT-R-AC-WHT-QS-D**  
LED Exit Sign, Red, AC Dual Voltage, Industry-standard White
- **EXIT-R-EM-WHT-QS-D**  
LED Exit Sign, Red, EM Dual Voltage, Industry-standard White



### EXIT/EM

- **EXIT/EM-SF-R-WHT-QS-D**  
Combo LED Exit/Emergency Unit, Single Face, Red, Industry-standard White, Dual Voltage

## OUTDOOR



### VWMH

- **VWMH-LED10/840-DBZ-QS-EDD\*IN-UNV**  
Voltaire Architectural Mini Wall Pack – Horizontal, 1,000 lumen, 4,000K CCT, Dark bronze, 0-10V dimming driver, Universal volt
- **VWMH-LED17/840-DBZ-QS-EDD\*IN-UNV**  
Voltaire Architectural Mini Wall Pack – Horizontal, 1,700 lumen, 4,000K CCT, Dark bronze, 0-10V dimming driver, Universal volt



### VWMV

- **VWMV-LED10/840-DBZ-QS-EDD\*IN-UNV**  
Voltaire Architectural Mini Wall Pack – Vertical, 1,000 lumen, 4,000K CCT, Dark bronze, 0-10V dimming driver, Universal volt
- **VWMV-LED17/840-DBZ-QS-EDD\*IN-UNV**  
Voltaire Architectural Mini Wall Pack – Vertical, 1,700 lumen, 4,000K CCT, Dark bronze, 0-10V dimming driver, Universal volt



H. E. WILLIAMS, INC.