

LITESPHERE™

LED

Energy-efficient, low voltage LED strand using wedge base LED lamps protected by clear, frosted or colored polycarbonate globes.

CAT:	FEET:
TYPE:	PROJECT:

FEATURES

- Flexible 16ga cord available in Black or White with matching socket
- Socket is parallel wired and permanently fixed to cable
- Smooth 0% to 100% range dimming capability with commercially available 0V-10V dimming protocol or magnetic and electronic low voltage dimmers (see page 4)

SPECIFICATIONS

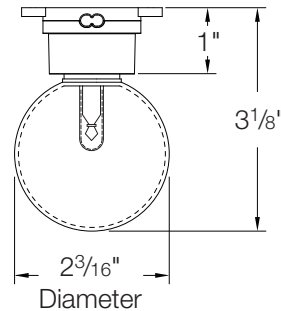
LED DATA	WATTAGE	LED LIFE / COLOR TEMP	VIEWING ANGLE
Litesphere LED	0.48W per LED*	40,000 hrs. Green or Blue 100,000 hrs. Red, or Yellow 40,000 hrs. Warm White or White	180°

*Ultra Bright Triple Chip LEDs operate at 52% of LED manufacturers maximum current spec rating.



1. **Spacing** - Lamp spacing: 6", 12", 18", 24" OC or Custom lamp spacing available - consult factory
2. **LEDs** - Uses 0.48W Triple Chip wedge-base LEDs lamps
3. **LED Colors** - Red, Yellow, Green, Blue, White and Warm White
4. **Globes** - Shatterproof polycarbonate O-ring fitted globes, protect lamps with clarity and seamless appearance available in Clear, Frosted, Yellow, Red, Orange, Green, Blue and Purple
5. **Socket** - Socket is parallel wired and permanently fixed to cable
6. **Socket Mounting** - Socket has mounting holes for screw attachment in under-eye applications
7. **Cable Mounting** - 1/8" stainless steel wire cable (by others) and hanger clips for festoon applications
8. **Channel Mounting*** - Architectural Channel available for linear or radius cut mounting (See next page)
*Outdoor building facade or upright socket mounting requires Architectural Channel
9. **Power Supply** - Listed Class I or Class II 12V DC power supply required
10. **Listing** - cULus listed for indoor or outdoor Class I or Class II applications
11. **Weight** - Litesphere product weighs 1.25 oz/ft (24" OC), 1.33 oz/ft (18" OC), 1.58 oz/ft (12" OC) & 2.05 oz/ft (6" OC)
12. **Rating** - IP65 Rated for outdoor use
13. **Warranty** - 3 Year Warranty

PROFILE



LITESPHERE LED ORDER SPECIFICATION GUIDE

Example: LSL-W-12-WW-F-12

PRODUCT CODE	WIRE	LAMP SPACING	LED COLOR	GLOBE COLOR	VOLTAGE	REQUIRED POWER SUPPLY
LSL	-	-	-	-	12	PSU
Litesphere LED™	B = Black W = White	06 = 6" OC 12 = 12" OC 18 = 18" OC 24 = 24" OC	BL = Blue GR = Green RD = Red YL = Yellow WH = White WW = Warm White	C = Clear F = Frosted Y = Yellow R = Red O = Orange G = Green B = Blue P = Purple Z = Varied Colors*	12 = 12V DC	See power supply specsheets

REQUIRED POWER SUPPLY OPTIONS

- ADNM-80-1-5-12-D
 - ADNM-150-2-5-12-D
 - ADNM-240-3-5-12-D
 - ADNM-320-4-5-12-D
 - ADNM-240-1-15-12-D
 - JT-60-1-5-12-D
 - JTH-60-1-5-12-D
 - JT-240-4-5-12-D
 - JTH-240-4-5-12-D
 - MW-80-1-5-12-D
 - MW-150-1-10-12-D
 - MW-240-1-15-12-D
 - MW-320-1-20-12-D
- See power supply specifications for more information

OPTIONAL DIMMERS

- N-600
 - NH-600
 - N-1000
 - NH-1000
 - N-1500
 - DIM-OT-1-5-D
- See dimming specification sheet for more information



LITESPHERE™

LED

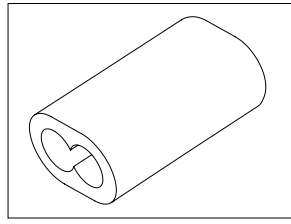
ACCESSORIES

WIRING ACCESSORIES

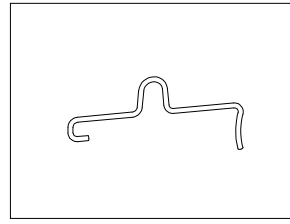


REPLACEMENT GLOBES

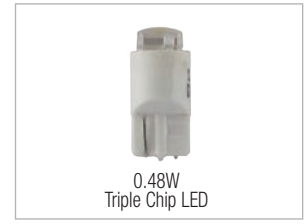
- LS-CG Clear
- LS-FG Frosted
- LS-YG Yellow
- LS-RG Red
- LS-OG Orange
- LS-GG Green
- LS-BG Blue
- LS-PG Purple



- LS-EC-BK Black end cap
- LS-EC-WH White end cap



LS-HANG-CLIP Hanger clip for installation from 8 gauge stainless steel aircraft cable



- ##### REPLACEMENT LEDS
- LSL-BL-F-12** 0.48W, 12V Wedge base Frosted LED - Blue
 - LSL-GR-F-12** 0.48W, 12V Wedge base Frosted LED - Green
 - LSL-RD-F-12** 0.48W, 12V Wedge base Frosted LED - Red
 - LSL-YL-F-12** 0.48W, 12V Wedge base Frosted LED - Yellow
 - LSL-WH-F-12** 0.48W, 12V Wedge base Frosted LED - White
 - LSL-WW-F-12** 0.48W, 12V Wedge base Frosted LED - Warm White

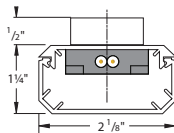
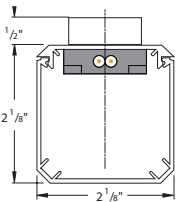
LITESPHERE ARCHITECTURAL CHANNEL SERIES FOR OUTDOOR UPRIGHT INSTALLATIONS

Example: AC-LS-B-06-WH-WW-F

PRODUCT CODE	WIRE	SOCKET	LAMP SPACING	FINISH	LED COLOR	GLOBE COLOR	REQUIRED POWER SUPPLY
AC	LS	B	06	PA	BL	C	PSU
AM		W	12	SA	GR	F	
			18	BK	RD	Y	
			24	WH	YL	R	
				WH	WH	O	
					WW	G	
						B	
						P	
						Z	

See power supply specsheets

PROFILES



STANDARD PROFILE CHANNEL **MEDIUM PROFILE CHANNEL**

For more detail, please see AC-LS Series specification sheet.



ACLS SERIES ARCHITECTURAL CHANNEL: Required for outdoor building facade or borderline upright mounting applications. Shown with 2" x 2" channel, 2" x 1" channel also available.

RECOMMENDED POWER SUPPLIES

CAT NO	PRIMARY AND SECONDARY	TOTAL WATTAGE / AMPERAGE PER BREAKER	LISTING	DIMENSIONS	ELECTRONIC OR AC MAGNETIC	DIMMABLE (Y OR N)
ADNM-80-1-5-12-D	120-277V AC / 12V DC	60W / 1X5A	cULus	12"W X 12"L X 4"D	Electronic	Y: F
ADNM-150-2-5-12-D	120-277V AC / 12V DC	120W / 2X5A	cULus	12"W X 12"L X 4"D	Electronic	Y: F
ADNM-240-3-5-12-D	120-277V AC / 12V DC	180W / 3X5A	cULus	12"W X 12"L X 4"D	Electronic	Y: F
ADNM-320-4-5-12-D	120-277V AC / 12V DC	240W / 4X5A	cULus	12"W X 12"L X 4"D	Electronic	Y: F
ADNM-240-1-15-12-D	120-277V AC / 12V DC	180W / 1X15A	cULus	12"W X 12"L X 4"D	Electronic	Y: F
JT-60-1-5-12-D	120V AC / 12V DC	60W / 1X5A	cETLus	4.25"W X 8.50"L X 3.25"D	Magnetic	Y: A, C & E
JTH-60-1-5-12-D	277V AC / 12V DC	60W / 1X5A	cETLus	4.25"W X 8.50"L X 3.25"D	Magnetic	Y: B & D
JT-240-4-5-12-D	120V AC / 12V DC	240W / 4X5A	cETLus	8.50"W X 16.00"L X 4.50"D	Magnetic	Y: A, C & E
JTH-240-4-5-12-D	277V AC / 12V DC	240W / 4X5A	cETLus	8.50"W X 16.00"L X 4.50"D	Magnetic	Y: B & D
MW-80-1-5-12-D	120-277V AC / 12V DC	60W / 1X5A	UL/CE	7.75"W X 2.50"L X 1.63"D	Electronic	Y: F
MW-150-1-10-12-D	120-277V AC / 12V DC	120W / 1X10A	UL/CE	9.00"W X 2.75"L X 1.63"D	Electronic	Y: F
MW-240-1-15-12-D	120-277V AC / 12V DC	180W / 1X15A	UL/CE	9.75"W X 2.75"L X 1.63"D	Electronic	Y: F
MW-320-1-20-12-D	120-277V AC / 12V DC	240W / 1X20A	UL/CE	10.00"W X 3.63"L X 1.75"D	Electronic	Y: F

DIMMERS

SELECTOR	DIMMER	TYPE	CONTROL SIGNAL	INPUT VOLTAGE	OUTPUT VOLTAGE	MAX LOAD	BREAKER RATING	DIMENSIONS
A	N-600	AC Magnetic	N/A	120V AC	120V AC	450W	N/A	Recessed Single Gang Box
B	NH-600	AC Magnetic	N/A	277V AC	277V AC	450W	N/A	Recessed Single Gang Box
C	N-1000	AC Magnetic	N/A	120V AC	120V AC	800W	N/A	Recessed Dual Gang Box
D	NH-1000	AC Magnetic	N/A	277V AC	277V AC	800W	N/A	Recessed Dual Gang Box
E	N-1500	AC Magnetic	N/A	120V AC	120V AC	1200W	N/A	Recessed Dual Gang Box
F	DIM-OT-1-5-D	Control Interface	0-10V DC	12V DC	12V DC	60W	5A*	7"L X 1½"W X ¾"H

DIM-OT is a full range control interface that receives dimming signal from various controllers (0-10V DC). Consult factory for more information.

*DIM-OT applications require 1 each DIM-OT per 5 amp circuit

PRODUCT SPECIFICATION GUIDE

SPACING	WATTS PER FOOT	PRODUCT MAX CIRCUIT LIMITATIONS (FT/LED'S PER SECONDARY CIRCUIT)	MAX INTERCONNECTABLE RUN LENGTHS
6" O.C.	.96W/ft	150' 300 LEDs per 15A Class I circuit 57' 115 LEDs per 5A Class II circuit	90' 57'
12" O.C.	.48W/ft	300' 300 LEDs per 15A Class I circuit 115' 115 LEDs per 5A Class II circuit	150' 115'
18" O.C.	.36W/ft	450' 300 LEDs per 15A Class I circuit 150' 115 LEDs per 5A Class II circuit	150' 150'
24" O.C.	.24W/ft	600' 300 LEDs per 15A Class I circuit 220' 115 LEDs per 5A Class II circuit	150' 150'

