

CAPSYLITE® SPL™ PAR20 AND PAR30



- Totally new halogen lens/reflector system
- Superior beam control and sharp cutoff
- Improved optical system provides consistent, uniform performance from lamp to lamp
- Up to 3000-hour lamp life
- Innovative technology for high performance
- Energy efficient halogen sources
- Lens stamped with beam pattern for easy identification

ECOLOGIC® is a comprehensive program of OSRAM SYLVANIA focused on addressing environmental issues at all stages of lamp life.



SYLVANIA CAPSYLITE SPL PAR20 and PAR30 lamps achieve their extraordinary performance by combining a tungsten halogen capsule with a unique lens/reflector system.

CAPSYLITE SPL PAR20 and PAR30 products deliver beam patterns unlike anything else available. The smooth beam performance and compact size of these lamps result in a new level of flexibility in lighting design. They are available in 35, 50 and 75 watts and in beam angles ranging from 8° to 50°. There is a CAPSYLITE SPL PAR20 or PAR30 available to meet virtually any lighting need.

Product Availability

Product	Wattage	Beam Angle
PAR20 SPL	35	NSP 8°, NFL 30°, WFL 40°
PAR20 SPL	50	NSP 10°, NFL 30°, WFL 40°
PAR30 SPL	50	NSP 9°, NFL 25°, WFL 40°
PAR30 SPL	60	NSP 9°, NFL 25°
PAR30 SPL	75	NSP 8°, NFL 25°, WFL 40°
PAR30 Long Neck SPL	35	NSP 9°, WFL 50°
PAR30 Long Neck SPL	50	NSP 9°, NFL 30°, WFL 50°
PAR30 Long Neck SPL	75	NSP 9°, NFL 30°, WFL 50°

Application Information

Applications	Application Notes
Highlight merchandise Accent / display lighting Floor lighting General lighting Indoor / Outdoor Retail Art galleries Hotels, restaurants Offices Residential	1. Lens stamped with beam pattern 2. Better cutoff – maximum lumens in the beam 3. Eliminates stray light at the edges of the beam pattern 4. Superior candlepower rating 5. New distinctive appearance and superior performance due to SPL optics which combines new spiral reflector and lens

SYLVANIA

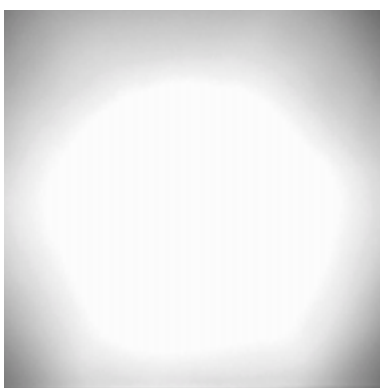
Sample Specification

Lamp shall be CAPSYLITE SPL halogen (PAR20, PAR30 or PAR30LN) lamp with a (2500 or 3000) – hour average rated life, shall be diode free and employ stabilized coils. Lamp shall be energy efficient and produced to EPACT standards. Lamp base shall contain no lead solder to make the disposal of used CAPSYLITE SPL lamp easier for the end user.

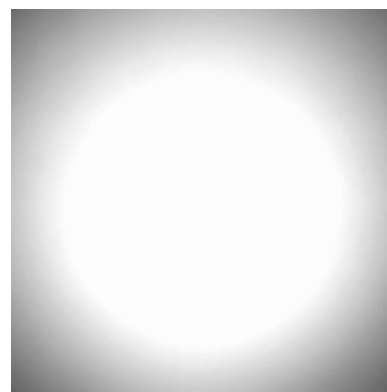
Lamp Comparison

Item No.	Lamp Type	Beam Angle	Color Temperature (K)	CBCP (cd)	Lumen (lm)	Life (hours)
14332	SYLVANIA 60PAR30/CAP/SPL/NSP9 Brand X 60PAR30/H/SP10	9	2950	12,000	830	3000
		10	2800	10,000	800	3000
14333	SYLVANIA 60PAR30/CAP/SPL/NFL25 Brand X 60PAR/H/FL25	25	2950	3500	830	3000
		25	2800	2400	800	3000
14467	SYLVANIA 35PAR20/CAP/SPL/NSP8 No competitive product available	8	2950	3000	400	2500
14464	SYLVANIA 35PAR20/CAP/SPL/NFL30 No competitive product available	30	2950	900	400	2500
14506	SYLVANIA 35PAR20/CAP/SPL/WFL40 No competitive product available	40	2950	600	400	2500

Optical Performance



Standard Halogen PAR



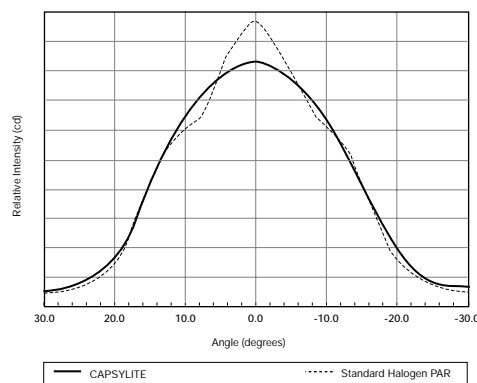
New CAPSYLITE SPL

CAPSYLITE SPL Optical System

PAR20, PAR30 and PAR30 Long Neck CAPSYLITE lamps employ a patented spiral lenticule layout on their lenses. These patterns were computer designed to deliver a smooth, round beam pattern that is free from hot spots and stray light. The new lenses, however, are only half of the story. The new spiral flat reflectors were also computer designed to work in concert with the lenses. The spiral flats on the inner surface of the reflector begin to shape and contour the light rays before they reach the lens. The reflector and the lens, therefore, share the job of controlling the light so that the resultant beam pattern is as smooth as possible. The optical system maximizes the lumens in the beam angle, while providing consistent lamp-to-lamp performance.

Beam Performance

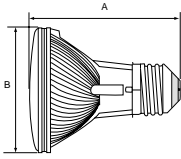
Comparison of Standard Halogen PAR to New CAPSYLITE with SPL Optics



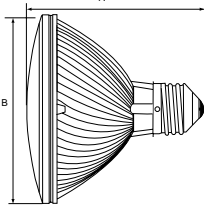
The beam performance of the CAPSYLITE product line with SPL optics will change the way PAR lamps are specified. Traditionally, PAR lamps were designed to provide peak intensity in the center of the beam and the light level dropped rapidly from that point. In contrast, the CAPSYLITE product line is designed to give a more even distribution of high level light across as broad an area as possible with no hot spots. The result is a uniform light level on the target that maximizes the impact of the halogen source.

Dimensions

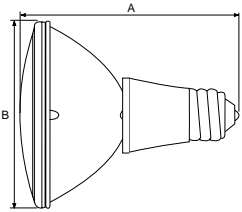
Bulb	(A)	(B)
	MOL	Bulb Diameter
PAR20	3 1/4	2 1/2
PAR30	3 5/8	3 3/4
PAR30LN	4 11/16	3 3/4



PAR20



PAR30



PAR30 LN

Footcandle

35PAR20/CAP/SPL/NSP			35PAR20/CAP/SPL/NFL			35PAR20/CAP/SPL/WFL			50PAR20/CAP/SPL/NSP			50PAR20/CAP/SPL/NFL		
Distance from Source (in ft.)	Diameter (in ft.)	FC*	Diameter (in ft.)	FC*	Diameter (in ft.)	FC*	Diameter (in ft.)	FC*	Diameter (in ft.)	FC*	Diameter (in ft.)	FC*	Diameter (in ft.)	FC*
3'	0.4'	335	1.6'	100	2.2'	65	0.5'	555	1.6'	140				
6'	0.8'	85	3.2'	25	4.4'	15	1.0'	140	3.2'	35				
9'	1.3'	35	4.8'	10	6.6'	7	1.6'	60	4.8'	15				

50PAR20/CAP/SPL/WFL			35PAR30LN/CAP/NSP			35PAR30LN/CAP/WFL			50PAR30/CAP/SPL/NSP			50PAR30/CAP/SPL/NFL		
Distance from Source (in ft.)	Diameter (in ft.)	FC*	Diameter (in ft.)	FC*	Diameter (in ft.)	FC*	Diameter (in ft.)	FC*	Diameter (in ft.)	FC*	Diameter (in ft.)	FC*	Diameter (in ft.)	FC*
3'	2.2'	89	0.5'	665	2.8'	40	0.5'	890	1.3'	289				
6'	4.4'	22	0.9'	165	5.6'	10	0.9'	220	2.7'	78				
9'	6.6'	10	1.4'	75	8.4'	4	1.4'	100	4.0'	35				

50PAR30/CAP/SPL/FL			50PAR30LN/CAP/WFL			60PAR30/CAP/SPL/NSP			60PAR30/CAP/SPL/NFL			
Distance from Source (in ft.)	Diameter (in ft.)	FC*	Diameter (in ft.)	FC*	Diameter (in ft.)	FC*	Diameter (in ft.)	FC*	Diameter (in ft.)	FC*	Diameter (in ft.)	FC*
3'	2.2'	145	2.8'	56	0.5'	1333	1.3'	389				
6'	4.4'	35	5.6'	15	0.9'	333	2.7'	97				
9'	6.6'	15	8.4'	6	1.4'	148	4.0'	43				

75PAR30/CAP/SPL/NSP			75PAR30/CAP/SPL/NFL			75PAR30/CAP/SPL/FL			75PAR30LN/CAP/WFL			
Distance from Source (in ft.)	Diameter (in ft.)	FC*	Diameter (in ft.)	FC*	Diameter (in ft.)	FC*	Diameter (in ft.)	FC*	Diameter (in ft.)	FC*	Diameter (in ft.)	FC*
3'	0.5'	1555	1.3'	489	2.2'	220	2.8'	85				
6'	0.9'	390	2.7'	122	4.4'	55	5.6'	20				
9'	1.4'	175	4.0'	54	6.6'	25	8.4'	9				

SYLVANIA CAPSYLITE PAR lamps are available in a full range of beam angles to meet the demands of virtually any display or accent lighting application. For each available CAPSYLITE PAR lamp, this table shows how lamp output in footcandles varies as a function of distance.

Ordering and Specification Information

Item Number	Ordering Abbreviation	Watts	Base	Avg. Rated Life (hrs)	Volts	CBCP	Beam Angle	Lumens	MOL
14467	35PAR20/CAP/SPL/NSP8	35	Medium	2500	120	3000	8°	400	3 1/4
14460	35PAR20/CAP/SPL/NSP8	35	Medium	2500	130	3000	8°	400	3 1/4
14464	35PAR20/CAP/SPL/NFL30	35	Medium	2500	120	900	30°	400	3 1/4
14459	35PAR20/CAP/SPL/NFL30	35	Medium	2500	130	900	30°	400	3 1/4
14506	35PAR20/CAP/SPL/WFL40	35	Medium	2500	120	600	40°	400	3 1/4
14461	35PAR20/CAP/SPL/WFL40	35	Medium	2500	130	600	40°	400	3 1/4
14500	50PAR20/CAP/SPL/NSP10	50	Medium	2500	120	5000	10°	530	3 1/4
14528	50PAR20/CAP/SPL/NSP10	50	Medium	2500	130	5000	10°	530	3 1/4
14502	50PAR20/CAP/SPL/NFL30	50	Medium	2500	120	1450	30°	530	3 1/4
14529	50PAR20/CAP/SPL/NFL30	50	Medium	2500	130	1450	30°	530	3 1/4
14700	50PAR20/CAP/SPL/WFL40	50	Medium	2500	120	800	40°	530	3 1/4
14526	50PAR30/CAP/SPL/NSP9	50	Medium	2500	120	8000	9°	600	3 5/8
14530	50PAR30/CAP/SPL/NSP9	50	Medium	2500	130	8000	9°	600	3 5/8
14527	50PAR30/CAP/SPL/NFL25	50	Medium	2500	120	2600	25°	600	3 5/8
14531	50PAR30/CAP/SPL/NFL25	50	Medium	2500	130	2600	25°	600	3 5/8
14710	50PAR30/CAP/SPL/FL40	50	Medium	2500	120	1300	40°	600	3 5/8
14533	50PAR30/CAP/SPL/FL40	50	Medium	2500	130	1300	40°	600	3 5/8
14332	60PAR30/CAP/SPL/NSP9	60	Medium	3000	120	12,000	9°	830	3 5/8
14333	60PAR30/CAP/SPL/NFL25	60	Medium	3000	120	3500	25°	830	3 5/8
14604	75PAR30/CAP/SPL/NSP9	75	Medium	2500	120	14,000	9°	1100	3 5/8
14628	75PAR30/CAP/SPL/NSP9	75	Medium	2500	130	14,000	9°	1100	3 5/8
14603	75PAR30/CAP/SPL/NFL25	75	Medium	2500	120	4400	25°	1100	3 5/8
14627	75PAR30/CAP/SPL/NFL25	75	Medium	2500	130	4400	25°	1100	3 5/8
14606	75PAR30/CAP/SPL/FL40	75	Medium	2500	120	2000	40°	1100	3 5/8
14629	75PAR30/CAP/SPL/FL40	75	Medium	2500	130	2000	40°	1100	3 5/8
14759	35PAR30LN/CAP/NSP9	35	Medium	2500	120	6000	9°	450	4 11/16
14764	35PAR30LN/CAP/WFL50	35	Medium	2500	120	350	50°	450	4 11/16
14509	50PAR30LN/CAP/NSP9	50	Medium	2500	120	8000	9°	600	4 11/16
14482	50PAR30LN/CAP/NSP9	50	Medium	2500	130	8000	9°	600	4 11/16
14520	50PAR30LN/CAP/NFL30	50	Medium	2500	120	1850	30°	600	4 11/16
14478	50PAR30LN/CAP/NFL30	50	Medium	2500	130	1850	30°	600	4 11/16
14537	50PAR30LN/CAP/WFL50	50	Medium	2500	120	500	50°	600	4 11/16
14536	50PAR30LN/CAP/WFL/FP	50	Medium	2500	120	500	50°	600	4 11/16
14486	50PAR30LN/CAP/WFL50	50	Medium	2500	130	500	50°	600	4 11/16
14786	75PAR30LN/CAP/NSP9	75	Medium	2500	120	14,000	9°	1100	4 11/16
14777	75PAR30LN/CAP/NSP9	75	Medium	2500	130	14,000	9°	1100	4 11/16
14769	75PAR30LN/CAP/NFL30	75	Medium	2500	120	3200	30°	1100	4 11/16
14778	75PAR30LN/CAP/NFL30	75	Medium	2500	130	3200	30°	1100	4 11/16
14768	75PAR30LN/CAP/WFL50	75	Medium	2500	120	750	50°	1100	4 11/16
14785	75PAR30LN/CAP/WFL50	75	Medium	2500	130	750	50°	1100	4 11/16

Ordering Guide

50	PAR30	LN	/	CAP	/	SPL	/	NSP	10
Wattage:	Parabolic	Long Neck		CAPSYLITE				Beam Spread:	9°
50	Reflector							NSP=Narrow Spot	10°
	Diameter							NFL=Narrow Flood	25°
	30=30/8							FL=Flood	30°
	20=20/8							WFL=Wide Flood	40°

OSRAM SYLVANIA
National Customer
Support Center
18725 N. Union Street
Westfield, IN 46074

Industrial & Commercial

Phone: 1-800-255-5042
Fax: 1-800-255-5043

National Accounts

Phone: 1-800-562-4671
Fax: 1-800-562-4674

Special Markets

Phone: 1-800-762-7191
Fax: 1-800-762-7192

In Canada
OSRAM SYLVANIA LTD.
Headquarters
2001 Drew Road
Mississauga, ON L5S 1S4

Industrial & Commercial

Phone: 1-800-263-2852
Fax: 1-800-667-6772

Special Markets

Phone: 1-800-265-2852
Fax: 1-800-667-6772

