

# Indy™ Architectural Recessed Lighting

LED Commercial Downlights



Hyperbolic



Parabolic



JUNO LIGHTING GROUP  
by Schneider Electric

# Indy™ LED Downlights

Leading the way in  
commercial lighting



Engineered for high performance

# Indy™ LED Commercial Downlights

## Quality, Performance, Innovation ...

It's why Indy LED Downlights are today's most compelling offering in commercial lighting.



> **Indy Designer Series LED** luminaires already occupy the top tier of architectural-grade commercial lighting with their remote-phosphor technology and sophisticated optics\* ...



> Now, with the latest generation of **Indy LED Commercial Downlights**, we can offer commercial-grade quality and exceptional performance with never-before-possible affordability. Downlight or wall wash; new construction or remodel; 4", 6" or 8" housings ... Indy LED Downlights have you covered.

---

## Table of Contents

Where advanced LED technology meets affordability	5
Innovative design is the key to superior performance	6
Silent Ceiling™ Hyperbolic Reflectors	8 -11
Lumen Depreciation Indicator	12 -13
Luminaire Features	14 -15
Energy Savings and Payback	16 -17
4", 6", 8" Hyperbolic - New construction and remodel luminaires	18
4", 6", 8" Parabolic - New construction and remodel luminaires	26
4", 6", 8" Wall Washers - New construction and remodel luminaires	34
Index	43

\* For more information on Indy Designer Series LED, visit [www.junolightinggroup.com](http://www.junolightinggroup.com)

Broad Lumen Range



Innovative Lumen Depreciation Indicator



Unique Aesthetics



Superior Efficacy & Payback





# Indy™ LED Commercial Downlights

Where advanced LED technology meets innovation



## Very Broad Lumen Range: p. 6-7

From 800 to 2,700 **delivered** lumens, the Indy LED Commercial Downlights offer one of the broadest ranges of lumen packages in the industry. And no other LED downlights cover the range of applications ... 8-foot office ceilings, 20-foot lobbies and more ... commercial offices, retail, grocery, medical, hospitality.



## Unique Aesthetics: p. 8-11

Unique Hyperbolic reflectors eliminate lamp image in the reflector resulting in what we like to call a “silent” ceiling. Multiple beam spreads offer uniform light distribution on illuminated surfaces that feather smoothly along the beam edges. Dazzling finishes and trims enhance any interior.



## Innovative Lumen Depreciation Indicator: p. 12-13

A common concern with LED technology is that LEDs do not actually “burn out”, they continue to decrease in light output over a very long period of time. As a result, customers may not know when the light levels have dropped below an acceptable level. The exclusive Indy “Lumen Depreciation Indicator” informs maintenance when it is time to replace the light engine in order to prevent the delivered lumens from dropping below 70% of initial lumens.



## Super Efficacy and Payback: p. 16-17

Clever engineering and breakthrough manufacturing efficiencies result in a commercial-grade LED downlight with superior efficacy and payback. With efficacies ranging from 45-70 lm/W, as well as a more efficient chip-on-board manufacturing approach, the payback on Indy LED Downlights now approaches that of equivalent CFL lighting. And virtually maintenance-free LED operation adds to the savings.



## ENERGY STAR® Qualified



Indy LED Downlights have earned the ENERGY STAR Qualified label for commercial downlight installations. Look for the ENERGY STAR label on the 4", 6", 8" downlight product pages.



# Indy™ LED Commercial Downlights

Innovative design is the key to superior performance

## > On-board with the industry's most powerful light engine

Chip-on-board (COB) light engine technology is at the heart of Indy LED's advanced design. COB allows a more streamlined manufacturing process, greatly reducing the steps involved and making high-quality LED illumination more affordable than ever before. It also enables us to employ significantly more LEDs in our array; then under-drive them for greater efficiency and higher light output of up to 2,700 delivered lumens with efficacies approaching 70 lm/W depending on color temperature. The LEDs are covered with a single homogeneous phosphor layer, providing consistent fixture-to-fixture color temperature within three MacAdam ellipses.



Indy LED Commercial Downlights  
are made in the USA.  
BAA / ARRA Compliant





## > Brilliant performance ... comprehensive selection

Indy LED Commercial Downlights feature the most extensive selection of lumen packages in the industry, ranging from 800 to 2,700 delivered lumens. Depending on the model, efficacy can range from 45 to 70 lumens per watt.

Available color temperatures are 2700, 3000, 3500 and 4100K with an excellent CRI of 80 minimum. Multiple beam patterns lay down smooth, even illumination with very soft edges.

No matter the application or ceiling height, there's a luminaire perfectly suited for the job.

# Indy™ LED Commercial Downlights

Introducing the Silent Ceiling™

## Hyperbolic



Indy LED Downlight Hyperbolic reflectors are available in a variety of finishes.



White



Black



Bronze



Pewter



Wheat



Gold



Clear

# New Approach for a Directional Source



Engineering research revealed that the hyperbola is the optimum reflector shape for a small, directional light source like LEDs.

It brings the reflector closer to the beam, providing superior control of the light distribution. This allows for multiple distribution patterns to accommodate various ceiling heights as well as a smoother beam pattern on the floor without incurring the light loss that occurs with the use of lenses.

Due to the geometry of the hyperbolic curve, there is no source image in the reflector, which dramatically reduces the aperture brightness. The hyperbolic reflector shape also reduces the amount of light-source regression required for glare control by increasing the shielding angle, thereby reducing the profile of the downlight housing and permitting it to fit in a wide variety of construction applications.

## **Hyperbolic benefits:**

- ↑ Increased lumens
- ↑ Increased efficacy
- ↑ Increased application flexibility
- ↑ Unique aesthetics

# Indy™ LED Commercial Downlights

## >> New Hyperbolic ... Unique Silent Ceiling™



The innovative Indy LED Downlights have taken the “quiet” ceiling effect to a whole new level. Their hyperbolic reflector design is so effective at reducing glare that, instead of “quiet,” we now refer to ceilings as “silent.”

# >> Standard Parabolic ... for the traditionalist



In addition to hyperbolic reflectors, Indy LED Commercial Downlights are also available with parabolic reflectors. They feature a regressed lens that optimizes light distribution and shields the light source from view when off. They produce high-quality, brilliant white light that is ideal for commercial applications where a traditional look is desired. Parabolic reflectors are available with all the same trim options featured on the hyperbolic reflector line.

# Indy™ LED Commercial Downlights

The day will come when even LEDs  
need to be replaced ...  
**but how do you know when?**



LEDs don't burn out ...  
they just degrade  
over time.

Indy LED Commercial Downlights are designed to provide a remarkable 50,000 hours of operation while maintaining at least 70% of their initial luminance. But, how do you know when that service life threshold has been reached?

Our engineers have devised an innovative **Lumen Depreciation Indicator** System concealed beneath the fixture trim. It features proprietary electronic circuitry that alerts maintenance personnel that the downlight requires attention. Upon removal of the trim, a red indicator light signifies that the service limit has been reached.

The optional Lumen Depreciation Indicator enables building management to maintain light levels in accordance with the original lighting design, assuring optimum illumination for productivity and safety. Indy LED modular light engines can be easily changed out for replacement or future upgrades.

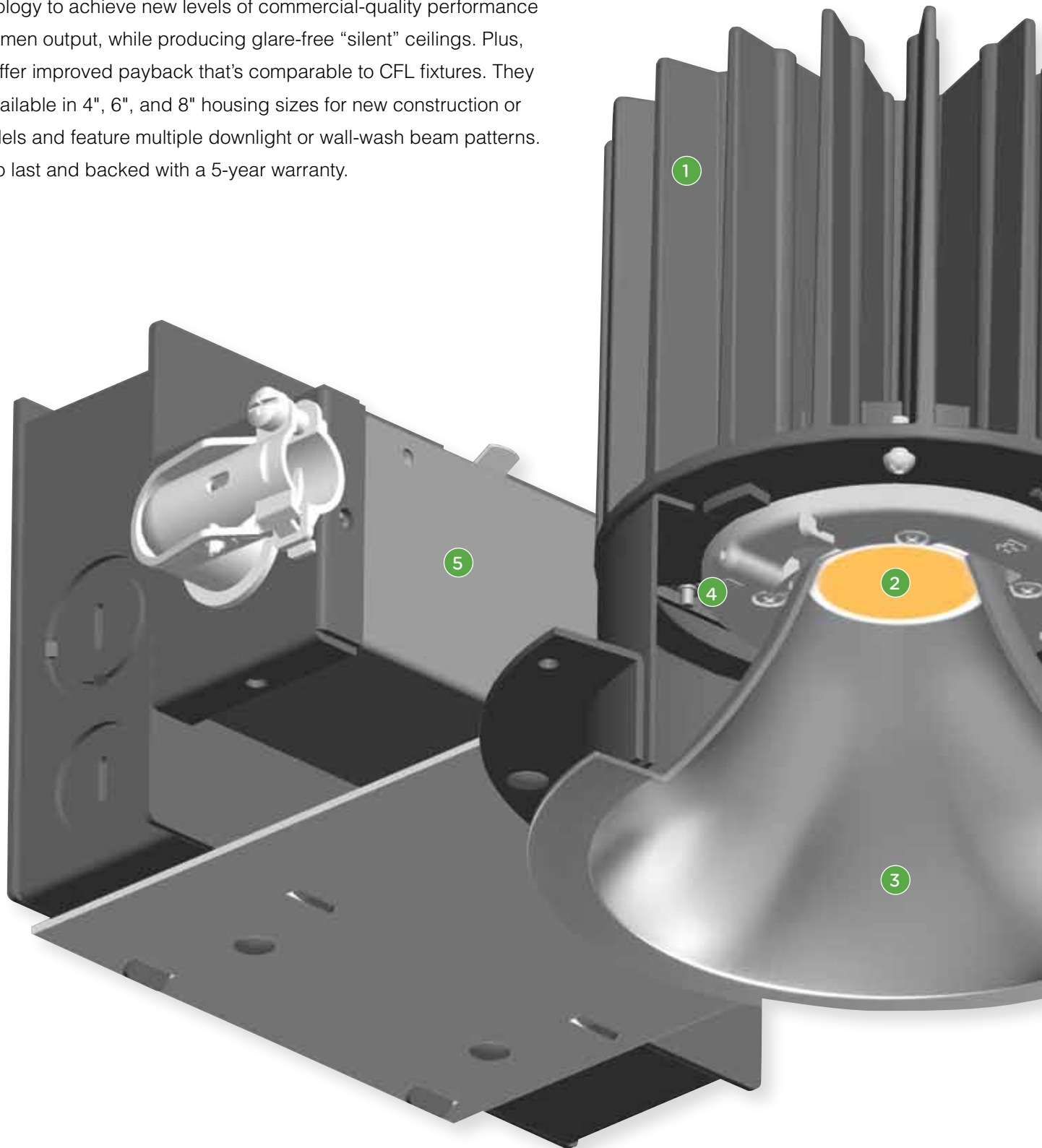


**Lumen Depreciation Indicator** ... ideal wherever illumination levels are critical, such as stairwells, hospitals, data centers and retail stores

# Indy™ LED Commercial Downlights

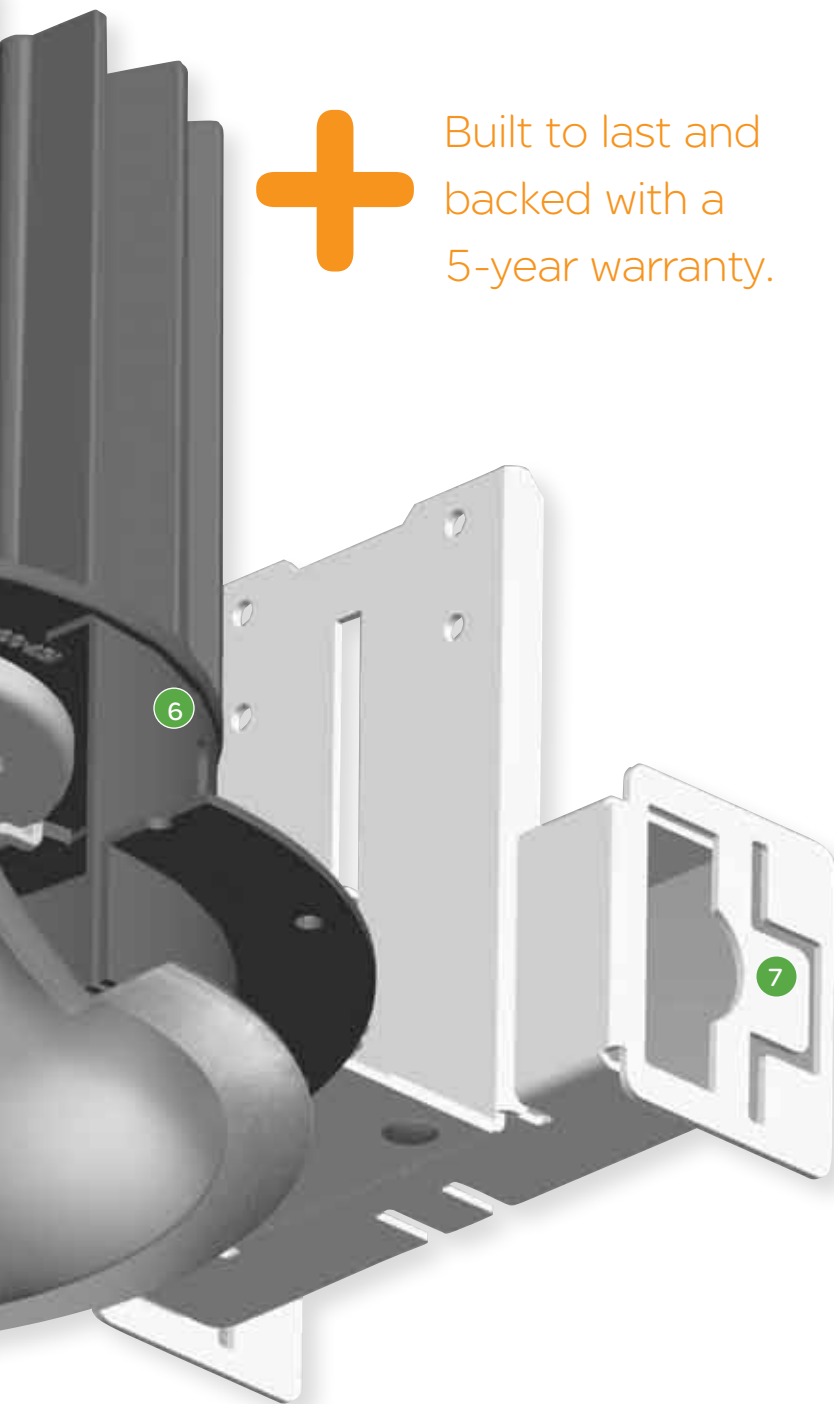
Unique, innovative and extremely practical

Indy LED Downlights incorporate the latest advances in lighting technology to achieve new levels of commercial-quality performance and lumen output, while producing glare-free “silent” ceilings. Plus, they offer improved payback that’s comparable to CFL fixtures. They are available in 4", 6", and 8" housing sizes for new construction or remodels and feature multiple downlight or wall-wash beam patterns. Built to last and backed with a 5-year warranty.





Built to last and backed with a 5-year warranty.



### 1 Efficient thermal management

A cast aluminum heat sink is directly integrated with the housing to maintain LED junction temperatures below specified limits. Efficient thermal management means that after 50,000 hours, the LEDs can be expected to produce at least 70% of their initial light output.

### 2 Chip-on-board LED light engine

The innovative COB light engine uses multiple LEDs that are under-driven for exceptional efficiency and light levels ranging from 800 to 2,700 fixture lumens. Industry leading efficacy approaching 70 lm/W. Available in 2700K, 3000K, 3500K, and 4100K color temperatures, 80 CRI minimum. The modular light engine is easily replaceable.

### 3 Low-brightness optics

The unique hyperbolic reflector provides superior light distribution control, reducing cut-off angles and creating "silent" ceilings as well as very uniform beam patterns at floor level. Low reflector profile permits greater installation versatility.

Choose from six lustrous trim colors in specular, semi-specular or satin finishes. Self-flanged or a white-flange option. Baffles are available in white or black. Downlight or wall-wash light distribution available in a variety of beam spreads.

### 4 Lumen depreciation indicator - Option

Only Indy can offer this innovative Lumen Depreciation Indicator that alerts maintenance when the light output reaches 70% lumen maintenance. An indicator light underneath the trim confirms that the LED light engine has reached the end of its useful life.

### 5 Dimmable LED driver

The driver accommodates inputs of 120, 277, or 347 volts. It offers 0-10V dimming and is compatible with the Lutron EcoSystem®. The driver is easily serviced from above or below the ceiling. Emergency-lighting backup operation is optional.

### 6 Housing

The commercial-grade housing features an extra-low profile for easy installation in a variety of applications. A sloped-ceiling adaptor is available, and a wet-location version is optional.

### 7 Mounting bracket

Adjustable mounting brackets provide 3" of vertical adjustment to facilitate installation. Indy Tru-Lock® bar hangers are also available for secure mounting in T-bar drop ceilings.

# Indy™ LED Commercial Downlights

## Payback for you ...

Thanks to manufacturing and design breakthroughs, you no longer have to pay a significant premium for LED quality, performance and efficiency.

The initial investment for Indy LED Commercial Downlights now approaches that for comparable CFL fixtures. And when you factor-in 25% or better energy efficiency, five-times greater service life, and over 50% lower annual operating costs, the payback is almost immediate. See chart below for detail.

HYPERBOLIC	PARABOLIC	FIXTURE SUMMARY		CFL
L6-17301 + L600H-CL	L6-23301 + L600P-CL	Fixture		C6V-126/42T + C600-42-CL
23W LED	37W LED	Light Source		42W Triple Tube
6 inch	6 inch	Aperture Diameter		6 inch
50,000	50,000	Lamp Life (hrs.)		12,000
1427	1800	Fixture Lumens		1785
22W	37W	Input Wattage		46W
65 lm/W	49 lm/W	Luminaire Efficacy		39 lm/W
50°	50°	Cutoff		55°
0.9 s/mh	1.0 s/mh	Spacing Criterion		1.0 s/mh
7 1/4"	7 1/4"	Fixture Height		9 1/2"
Yes	Yes	Dimming		Yes
5 years	5 years	Warranty		1 year

Layout study based on 25 fixtures in a 30' x 30' space with 9' ceilings maintained light levels

Illuminance Summary			
37fc	47fc	Average Illuminance	43fc
2.1	1.9	Uniformity Ratio (Max/Min)	2.2
0.62W/ft2	1.02W/ft2	Watts Per Square Foot	1.28W/ft2

Operating Cost Summary			
\$9.64	\$16.21	Annual Energy Cost Per Fixture*	\$20.15
\$0.00	\$0.00	Annual Relamping Cost Per Fixture**	\$4.87

\$240.90



ANNUAL OPERATING  
COST REDUCED BY  
**62%**

\$405.15



ANNUAL OPERATING  
COST REDUCED BY  
**35%**

Annual Operating/Labor Costs

\$625.34

\*Total input watts x 12hrs/day x 365days/year x \$0.10/KWH/1000

\*\*Replacement cost per lamp (lamp and labor) x annual hrs. of operation/lamp life



... Payback for the environment



When you choose Indy LED Commercial Downlights, you not only are making the right choice for you ... but also the right choice for our planet.

Indy™ LED Commercial Downlights

> Hyperbolic



## Silent Ceiling™ Reflectors

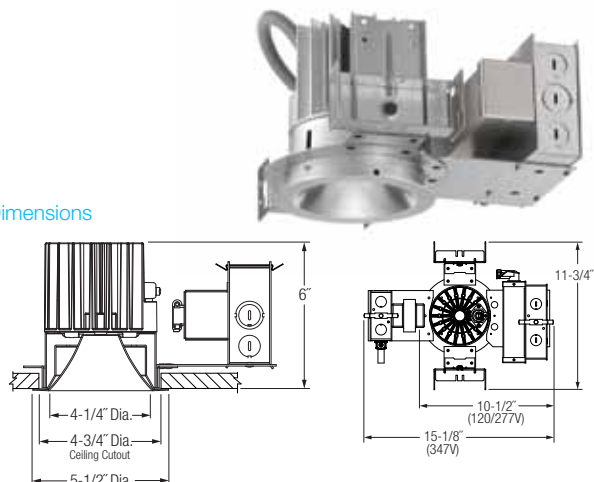


### Table of Contents

4" Hyperbolic New Construction and Remodel Downlights .....	20
6" Hyperbolic New Construction and Remodel Downlights .....	22
8" Hyperbolic New Construction and Remodel Downlights .....	24

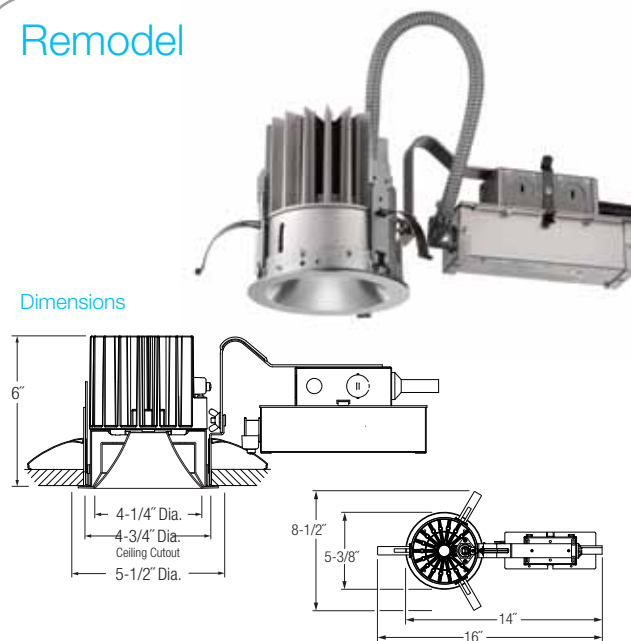
## New Construction

Dimensions



## Remodel

Dimensions



### Environmentally friendly, energy efficient

- Lumen packages comparable to 26W, 32W, 42W CFL, 2x26W CFL and 39W CMH with energy savings up to 40%
- Superior-quality white LED light output using Chip on Board technology • Indy LED Commercial Downlights have efficacies up to 70 lm/W
- No harmful ultraviolet or infrared wavelengths • No lead or mercury



## Product Specifications

### Optics

#### Reflector

Unique hyperbolic shape optimized for small, directional LED source, maximizes fixture efficiency while creating the "Silent Ceiling™" appearance by reducing lamp image and aperture brightness • Geometry of hyperbolic curve provides unique aperture appearance and smoother light distribution • Medium and wide distributions available • See ordering information for reflector colors and finishes.

### Electrical

#### Light Engine

MADE IN THE USA • Compact light source delivers uniform illumination without pixilation, enabling excellent beam control • Consistent fixture-to-fixture color temperature within 3 MacAdam Ellipses • Replaceable PC board with quick connector mounts directly to heat sink and incorporates the latest generation of high lumen output LEDs • CRI > 80 • Light engine mounts directly to heat sink and is easily replaceable • Cast aluminum heat sink integrated directly with housing provides superior thermal management to ensure the long life of LED.

#### LED Driver

Power factor > 0.9 • Dimmable via 0-10V protocol • Easily replaceable from above or below the ceiling.

#### Life

Rated for 50,000 hours at 70% lumen maintenance.

#### Labels and Listings

- UL Listed for feed through and damp locations • I.B.E.W. Union made
- UL and cUL, RoHS compliant • EMI complies with FCC 47, Part 15, Class A • Energy Star qualified, see ordering information for qualified product combinations.

#### Warranty

5 years when used in accordance with manufacturing guidelines.

### Mechanical

#### New Construction

##### Housing

Low profile, universal housing design installs in suspended grid, plaster or drywall • Integral cast aluminum heat sink conducts heat away from LED light engine • Driver is accessible from above and below ceiling.

##### Mounting Frame

Heavy gauge steel lower housing ring accommodates ceilings up to 2" thick • For thicker ceilings; consult factory.

##### Mounting Bracket

Mounting brackets have 3" vertical adjustment and accept proprietary Tru-Lock® bar hangers. 1-1/2" C-channel and flat linear bars (ordered as accessories) or 1/2" EMT, 3/4" and 1-1/2" lathing channel (by others) • One-piece Tru-Lock® bar hangers have integral T-bar locking screws and alignment notches for locating and locking fixture in the center or 1/4" tile increments.

##### Junction Box

Over size 4" x 6" galvanized steel junction box with (6) 1/2" (2) 3/4" knockouts facilitates quick wiring • Junction box rated for four (4) No. 12 AWG 90° C branch circuit conductors (2-in, 2-out).

#### Remodel

##### Housing

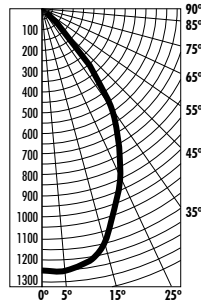
Installs from below ceiling in applications where above ceiling access is not available • Secured in place by factory installed remodel springs • Remodel springs accommodates 1/2" to 1-1/8" ceiling thickness • Integral cast aluminum heat sink conducts heat away from LED light engine • Driver is accessible from below the ceiling.

##### Junction Box

2" x 3-3/4" galvanized steel junction box with (6) 1/2" (2) 3/4" knockouts facilitates quick wiring.

## Clear Specular Alzak® Reflector 1500 Lumens - Wide

**Catalog Number:** L4-1530;  
**L400HW-CL**  
**PHOTOMETRIC REPORT**  
**Test Number:** PR08110193  
**Total Lumen Output:** 1337 Lumens  
**Luminaire Efficacy:** 66 lm/w (3K)  
**Luminaire Spacing Criteria:** 1.0  
**Luminaire:** Clear Specular Alzak®  
reflector. Open bottom, wide  
distribution.  
**CIE-Type:** Direct



### Initial Footcandles

Distance to Illuminated Plane (Feet)	Footcandles Beam Center	Footcandles Beam Edge	Beam Diameter
6'	34.8	9.8	8.2'
7'	25.6	7.2	9.5'
8'	19.6	5.5	10.9'
9'	15.5	4.4	12.3'
10'	12.5	3.5	13.6'
11'	10.3	2.9	15.0'
12'	8.7	2.5	16.4'
13'	7.4	2.1	17.7'
14'	6.4	1.8	19.1'
15'	5.6	1.6	20.5'

### Candlepower Distribution (Candelas)

Angle	Candela	Lumens
0°	1252	
5°	1253	120
15°	1160	329
25°	910	421
35°	600	377
45°	106	82
55°	4	4
65°	0	0
75°	0	0
85°	0	0

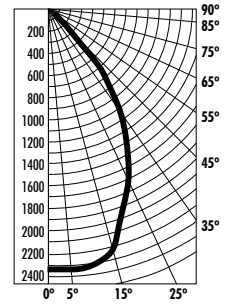
**Reflectances:** 80% Ceiling, 50% Walls, 30% Floors

Luminaire Spacing	Room Cavity Ratio		
	RCR1	RCR4	RCR8
5' x 5'	59	48	36
6' x 6'	41	33	25
7' x 7'	30	24	19
8' x 8'	23	19	14
9' x 9'	18	15	11
10' x 10'	15	12	9
11' x 11'	12	10	8
12' x 12'	10	8	6

See Specification Sheet for Photometric Multipliers.

## Clear Specular Alzak® Reflector 2800 Lumens - Wide

**Catalog Number:** L4-2830;  
**L400HW-CL**  
**PHOTOMETRIC REPORT**  
**Test Number:** PR08110293  
**Total Lumen Output:** 2550 Lumens  
**Luminaire Efficacy:** 56 lm/w (3K)  
**Luminaire Spacing Criteria:** 1.01  
**Luminaire:** Clear Specular Alzak®  
reflector. Open bottom, wide  
distribution.  
**CIE-Type:** Direct



### Initial Footcandles

Distance to Illuminated Plane (Feet)	Footcandles Beam Center	Footcandles Beam Edge	Beam Diameter
6'	65.3	18.5	8.2'
7'	48.0	13.6	9.5'
8'	36.7	10.4	11.0'
9'	29.0	8.2	12.3'
10'	23.5	6.7	13.7'
11'	19.4	5.5	15.1'
12'	16.3	4.6	16.4'
13'	13.9	3.9	17.8'
14'	12.0	3.4	19.2'
15'	10.4	3.0	20.6'

### Candlepower Distribution (Candelas)

Angle	Candela	Lumens
0°	2351	
5°	2347	224
15°	2231	632
25°	1748	809
35°	1140	716
45°	211	163
55°	5	5
65°	0	0
75°	0	0
85°	0	0

**Reflectances:** 80% Ceiling, 50% Walls, 30% Floors

Luminaire Spacing	Room Cavity Ratio		
	RCR1	RCR4	RCR8
5' x 5'	113	91	69
6' x 6'	79	63	48
7' x 7'	58	46	35
8' x 8'	44	35	27
9' x 9'	35	28	21
10' x 10'	28	23	17
11' x 11'	23	19	14
12' x 12'	20	16	12

See Specification Sheet for Photometric Multipliers.

## Ordering Information Rough-in, reflector and accessories each ordered separately.

### Example: L4-23351-LDI

Rough-in	Light Engine Lumens	Color Temperature	Voltage	Options
<b>L4</b>				
L4	13 1300 Lumens (21W)	27 2700K	1 120V	F Fuse and Fuse Holder
New	15 1500 Lumens (21W)	30 3000K	2 277V	CP† Chicago Plenum
Contr.				BR‡ Emergency Battery Pack
LRM4	17 1700 Lumens (23W)	35 3500K	3§ 347V	LDI W/ Remote Test Switch
Remodel	23 2300 Lumens (37W)	40 4100K		Lumen Depreciation Indicator
	28 2800 Lumens (46W)			PD♦ Driver compatible with Lutron Programmable Dimming EcoSystem®

† Consult Factory for Availability

§ New Construction Only

♦ Not Available for 2800 Lumens

Blue highlight indicates ENERGY STAR qualified products.

### Example: L400HW-CQ-WH

Reflector	Color Options	Finish	Options
<b>L400H</b>			
Open	C Clear	Low Iridescent	WH White Flange
Reflector,	G Gold	Alzak® Finishes:	
Medium	WT Wheat	L Specular	
Distribution	PT Pewter	S Satin	
	BZ Bronze	Q* Semi-Specular	
	B Black		
	W White	Blank for White	
L400HW			
Open			
Reflector,			
Wide			
Distribution			

\* Available in clear only

### Example: HB-TL

(New Construction Only)	
Accessories	
HB-TL	25" Tru-Lock® grid ceiling bar hangers, Pair
HB-52	52" C-Channel Bar Hangers, Pair
HB-28	28" C-Channel Bar Hangers, Pair
LB-27	27" Linear Bar Hangers, Pair
SCA-*	Sloped Ceiling adapter

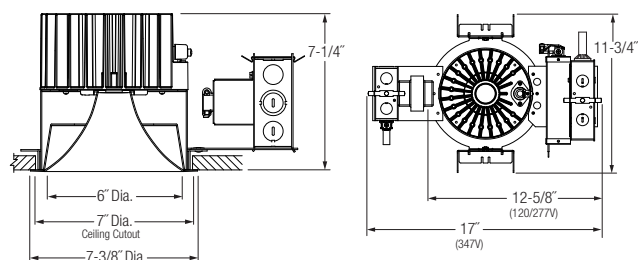
\*Angle must be specified when ordering; Available in 5°, 10°, 15°, 20°, 25°, 30°

Example: SCA-20

## New Construction



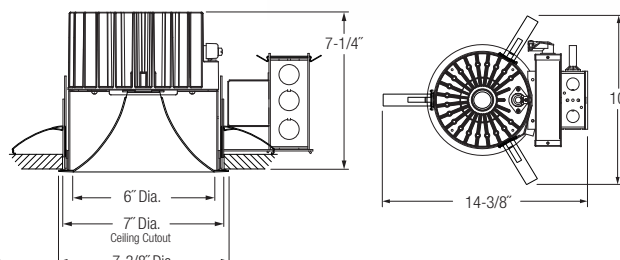
## Dimensions



## Remodel



## Dimensions



## Environmentally friendly, energy efficient

- Lumen packages comparable to 26W, 32W, 42W CFL, 2x26W CFL and 39W CMH with energy savings up to 40%
- Superior-quality white LED light output using Chip on Board technology • Indy LED Commercial Downlights have efficacies up to 70 lm/W
- No harmful ultraviolet or infrared wavelengths • No lead or mercury



## Product Specifications

## Optics

## Reflector

Unique hyperbolic shape optimized for small, directional LED source, maximizes fixture efficiency while creating the "Silent Ceiling™" appearance by reducing lamp image and aperture brightness • Geometry of hyperbolic curve provides unique aperture appearance and smoother light distribution • Medium and wide distributions available • See ordering information for reflector colors and finishes.

## Electrical

## Light Engine

MADE IN THE USA • Compact light source delivers uniform illumination without pixilation, enabling excellent beam control • Consistent fixture-to-fixture color temperature within 3 MacAdam Ellipses • Replaceable PC board with quick connector mounts directly to heat sink and incorporates the latest generation of high lumen output LEDs • CRI > 80 • Light engine mounts directly to heat sink and is easily replaceable • Cast aluminum heat sink integrated directly with housing provides superior thermal management to ensure the long life of LED.

## LED Driver

Power factor >0.9 • Dimmable via 0-10V protocol • Easily replaceable from above or below the ceiling.

## Life

Rated for 50,000 hours at 70% lumen maintenance.

## Labels and Listings

- UL Listed for feed through and damp locations • I.B.E.W. Union made
- UL and cUL, RoHS compliant • EMI complies with FCC 47, Part 15, Class A • Energy Star qualified, see ordering information for qualified product combinations.

## Warranty

5 years when used in accordance with manufacturing guidelines.

## Mechanical

## New Construction

## Housing

Low profile, universal housing design installs in suspended grid, plaster or drywall • Integral cast aluminum heat sink conducts heat away from LED light engine • Driver is accessible from above and below ceiling.

## Mounting Frame

Heavy gauge steel lower housing ring accommodates ceilings up to 2" thick • For thicker ceilings; consult factory.

## Mounting Bracket

Mounting brackets have 3" vertical adjustment and accept proprietary Tru-Lock® bar hangers. 1-1/2" C-channel and flat linear bars (ordered as accessories) or 1/2" EMT, 3/4" and 1-1/2" lathing channel (by others)

- One-piece Tru-Lock® bar hangers have integral T-bar locking screws and alignment notches for locating and locking fixture in the center or 1/4" tile increments.

## Junction Box

Over size 4" x 6" galvanized steel junction box with (6) 1/2" (2) 3/4" knockouts facilitates quick wiring • Junction box rated for four (4) No. 12 AWG 90° C branch circuit conductors (2-in, 2-out).

## Remodel

## Housing

Installs from below ceiling in applications where above ceiling access is not available • Secured in place by factory installed remodel springs

- Remodel springs accommodates 1/2" to 1-1/8" ceiling thickness
- Integral cast aluminum heat sink conducts heat away from LED light engine • Driver is accessible from below the ceiling.

## Junction Box

4" x 4" galvanized steel junction box with (6) 1/2" (2) 3/4" knockouts facilitates quick wiring.

## Clear Specular Alzak® Reflector 1500 Lumens - Wide

**Catalog Number:** L6-1740;

**L600HW-CL**

**PHOTOMETRIC REPORT**

**Test Number:** PR08111192

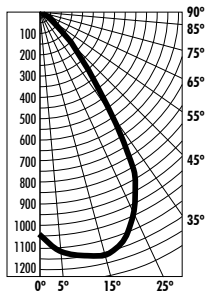
**Total Lumen Output:** 1494 Lumens

**Luminaire Efficacy:** 68 lm/w (3K)

**Luminaire Spacing Criteria:** 1.12

**Luminaire:** Clear Specular Alzak® reflector. Open bottom, wide distribution.

**CIE-Type:** Direct



### Initial Footcandles

Distance to Illuminated Plane (Feet)	Footcandles Beam Center	Footcandles Beam Edge	Beam Diameter
6'	29.1	8.6	8.7'
7'	21.4	6.3	10.2'
8'	16.4	4.8	11.6'
9'	12.9	3.8	13.1'
10'	10.5	3.1	14.6'
11'	8.7	2.6	16.0'
12'	7.3	2.1	17.5'
13'	6.2	1.8	18.9'
14'	5.4	1.6	20.4'
15'	4.7	1.4	21.8'

### Candlepower Distribution

Angle	Candela	Lumens
0°	1049	
5°	1116	107
15°	1169	331
25°	1049	486
35°	641	402
45°	217	168
55°	0	0
65°	0	0
75°	0	0
85°	0	0

**Reflectances:** 80% Ceiling, 50% Walls, 30% Floors

Luminaire Spacing	Room Cavity Ratio		
	RCR1	RCR4	RCR8
5' x 5'	66	53	39
6' x 6'	46	37	27
7' x 7'	34	27	20
8' x 8'	26	21	15
9' x 9'	20	16	12
10' x 10'	16	13	10
11' x 11'	14	11	8
12' x 12'	11	9	7

See Specification Sheet for Photometric Multipliers.

## Clear Specular Alzak® Reflector 2800 Lumens - Medium

**Catalog Number:** L6-2830;

**L600H-CL**

**PHOTOMETRIC REPORT**

**Test Number:** PR081111092

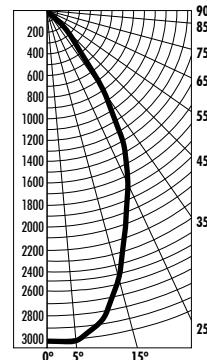
**Total Lumen Output:** 2591 Lumens

**Luminaire Efficacy:** 56 lm/w (3K)

**Luminaire Spacing Criteria:** 0.86

**Luminaire:** Clear Specular Alzak® reflector. Open bottom, medium distribution.

**CIE-Type:** Direct



### Initial Footcandles

Distance to Illuminated Plane (Feet)	Footcandles Beam Center	Footcandles Beam Edge	Beam Diameter
6'	83.5	28.6	6.6'
7'	61.4	21.0	7.7'
8'	47.0	16.1	8.8'
9'	37.1	12.7	9.9'
10'	30.1	10.3	11.0'
11'	24.8	8.5	12.1'
12'	20.9	7.2	13.2'
13'	17.8	6.1	14.2'
14'	15.3	5.3	15.3'
15'	13.4	4.6	16.4'

### Candlepower Distribution

Angle	Candela	Lumens
0°	3006	
5°	3027	289
15°	2549	722
25°	1784	826
35°	923	580
45°	210	163
55°	3	3
65°	2	2
75°	0	0
85°	0	0

**Reflectances:** 80% Ceiling, 50% Walls, 30% Floors

Luminaire Spacing	Room Cavity Ratio		
	RCR1	RCR4	RCR8
5' x 5'	115	93	73
6' x 6'	80	65	50
7' x 7'	59	48	37
8' x 8'	45	36	28
9' x 9'	36	29	22
10' x 10'	29	23	18
11' x 11'	24	19	15
12' x 12'	20	16	13

See Specification Sheet for Photometric Multipliers.

## Ordering Information Rough-in, reflector and accessories each ordered separately.

### Example: L6-28402-F

Rough-in	Light Engine Lumens	Color Temperature	Voltage	Options
<b>L6</b>				
L6	13 1300 Lumens (21W)	27 2700K	1 120V	F Fuse and Fuse Holder
New	15 1500 Lumens (21W)	30 3000K	2 277V	CP† Emergency Battery Pack
Contr.				BR\$ W/ Remote Test Switch
LRM6	17 1700 Lumens (23W)	35 3500K	3\$ 347V	LDI Lumen Depreciation Indicator
Remodel	23 2300 Lumens (37W)	40 4100K		PD ♦ Driver compatible with Lutron Programmable Dimming EcoSystem®
	28 2800 Lumens (46W)			

† Consult Factory for Availability

\$ New Construction Only

♦ Not Available for 2800 Lumens

Blue highlight indicates ENERGY STAR qualified products.

### Example: L600HW-CQ-WH

Reflector	Color Options	Finish	Options
<b>L600H</b>			
L600H	C Clear	Low Iridescent	WH White Flange
Open	G Gold	Alzak® Finishes:	
Reflector,	WT Wheat	L Specular	
Medium	PT Pewter	S Satin	
Distribution	BZ Bronze	Q* Semi-Specular	
	B Black		
	W White	Blank for White	
<b>L600HW</b>			
Open			
Reflector,			
Wide			
Distribution			

\* Available in clear only

### Example: HB-TL

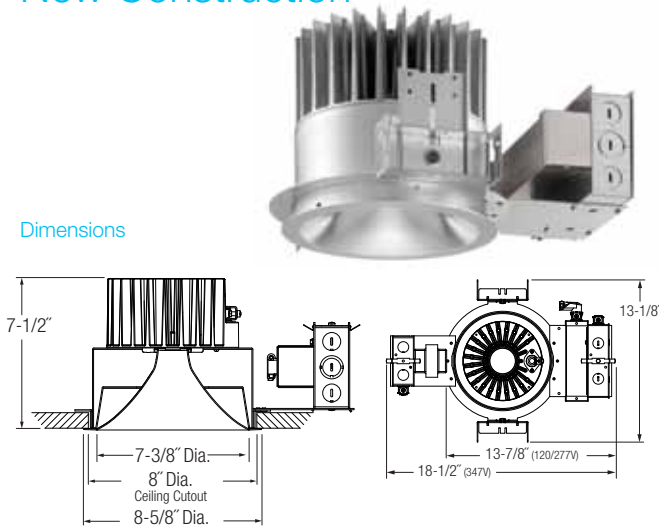
(New Construction Only)	Accessories
<b>HB-TL</b>	25" Tru-Lock® grid ceiling bar hangers, Pair
<b>HB-52</b>	52" C-Channel Bar Hangers, Pair
<b>HB-28</b>	28" C-Channel Bar Hangers, Pair
<b>LB-27</b>	27" Linear Bar Hangers, Pair
<b>SCA-*</b>	Sloped Ceiling adapter

\*Angle must be specified when ordering; Available in 5°, 10°, 15°, 20°, 25°, 30°

Example: **SCA6-20**

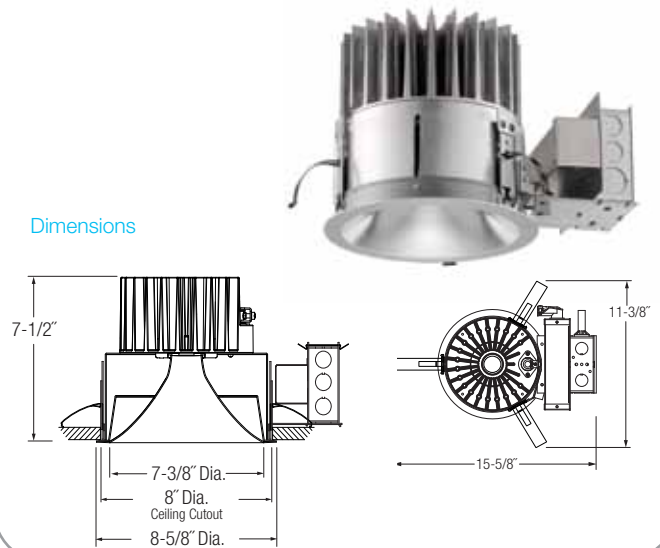
## New Construction

## Dimensions



## Remodel

## Dimensions



## Environmentally friendly, energy efficient

- Lumen packages comparable to 26W, 32W, 42W CFL, 2x26W CFL and 39W CMH with energy savings up to 40%
- Superior-quality white LED light output using Chip on Board technology • Indy LED Commercial Downlights have efficacies up to 70 lm/W
- No harmful ultraviolet or infrared wavelengths • No lead or mercury



## Product Specifications

## Optics

## Reflector

Unique hyperbolic shape optimized for small, directional LED source, maximizes fixture efficiency while creating the "Silent Ceiling™" appearance by reducing lamp image and aperture brightness • Geometry of hyperbolic curve provides unique aperture appearance and smoother light distribution • Medium and wide distributions available • See ordering information for reflector colors and finishes.

## Electrical

## Light Engine

MADE IN THE USA • Compact light source delivers uniform illumination without pixilation, enabling excellent beam control • Consistent fixture-to-fixture color temperature within 3 MacAdam Ellipses • Replaceable PC board with quick connector mounts directly to heat sink and incorporates the latest generation of high lumen output LEDs • CRI > 80 • Light engine mounts directly to heat sink and is easily replaceable • Cast aluminum heat sink integrated directly with housing provides superior thermal management to ensure the long life of LED.

## LED Driver

Power factor >0.9 • Dimmable via 0-10V protocol • Easily replaceable from above or below the ceiling.

## Life

Rated for 50,000 hours at 70% lumen maintenance.

## Labels and Listings

- UL Listed for feed through and damp locations • I.B.E.W. Union made
- UL and cUL, RoHS compliant • EMI complies with FCC 47, Part 15, Class A • Energy Star qualified, see ordering information for qualified product combinations.

## Warranty

5 years when used in accordance with manufacturing guidelines.

## Mechanical

## New Construction

## Housing

Low profile, universal housing design installs in suspended grid, plaster or drywall • Integral cast aluminum heat sink conducts heat away from LED light engine • Driver is accessible from above and below ceiling.

## Mounting Frame

Heavy gauge steel lower housing ring accommodates ceilings up to 2" thick • For thicker ceilings; consult factory.

## Mounting Bracket

Mounting brackets have 3" vertical adjustment and accept proprietary Tru-Lock® bar hangers. 1-1/2" C-channel and flat linear bars (ordered as accessories) or 1/2" EMT, 3/4" and 1-1/2" lathing channel (by others)

- One-piece Tru-Lock® bar hangers have integral T-bar locking screws and alignment notches for locating and locking fixture in the center or 1/4" tile increments.

## Junction Box

Over size 4" x 6" galvanized steel junction box with (6) 1/2" (2) 3/4" knockouts facilitates quick wiring • Junction box rated for four (4) No. 12 AWG 90° C branch circuit conductors (2-in, 2-out).

## Remodel

## Housing

Installs from below ceiling in applications where above ceiling access is not available • Secured in place by factory installed remodel springs

- Remodel springs accommodates up to 1/2" to 1-1/8" ceiling thickness
- Integral cast aluminum heat sink conducts heat away from LED light engine • Driver is accessible from below the ceiling.

## Junction Box

4" x 4" galvanized steel junction box with (6) 1/2" (2) 3/4" knockouts facilitates quick wiring.

## Clear Specular Alzak® Reflector 1500 Lumens - Wide

**Catalog Number:** L8-1740;  
**L800HW-CL**

**PHOTOMETRIC REPORT**

**Test Number:** PR01121192

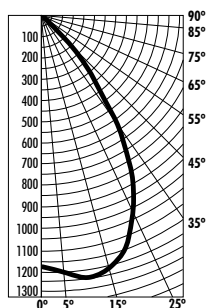
**Total Lumen Output:** 1530 Lumens

**Luminaire Efficacy:** 69 lm/w (3K)

**Luminaire Spacing Criteria:** 1.07

**Luminaire:** Clear Specular Alzak® reflector. Open bottom, wide distribution.

**CIE-Type:** Direct



### Initial Footcandles

Distance to Illuminated Plane (Feet)	Footcandles Beam Center	Footcandles Beam Edge	Beam Diameter
6'	32.7	9.5	8.5'
7'	24.0	7.0	9.9'
8'	18.4	5.3	11.3'
9'	14.5	4.2	12.7'
10'	11.8	3.4	14.1'
11'	9.7	2.8	15.5'
12'	8.2	2.4	16.9'
13'	7.0	2.0	18.3'
14'	6.0	1.7	19.7'
15'	5.2	1.5	21.2'

### Candlepower Distribution (Candelas)

Angle	Candela	Lumens
0°	1177	
5°	1199	114
15°	1220	346
25°	1039	481
35°	637	400
45°	238	184
55°	4	4
65°	0	0
75°	0	0
85°	0	0

**Reflectances:** 80% Ceiling, 50% Walls, 30% Floors

Luminaire Spacing	Room Cavity Ratio		
	RCR1	RCR4	RCR8
5' x 5'	67	54	40
6' x 6'	47	37	28
7' x 7'	34	27	21
8' x 8'	26	21	16
9' x 9'	21	17	12
10' x 10'	17	13	10
11' x 11'	14	11	8
12' x 12'	12	9	7

See Specification Sheet for Photometric Multipliers.

## Clear Specular Alzak® Reflector 2800 Lumens - Medium

**Catalog Number:** L8-2830;  
**L800H-CL**

**PHOTOMETRIC REPORT**

**Test Number:** PR01121096

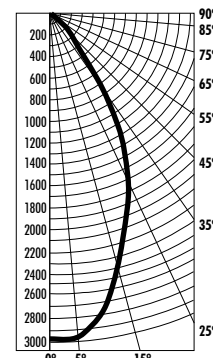
**Total Lumen Output:** 2511 Lumens

**Luminaire Efficacy:** 55 lm/w (3K)

**Luminaire Spacing Criteria:** 0.84

**Luminaire:** Clear Specular Alzak® reflector. Open bottom, medium distribution.

**CIE-Type:** Direct



### Initial Footcandles

Distance to Illuminated Plane (Feet)	Footcandles Beam Center	Footcandles Beam Edge	Beam Diameter
6'	82.9	28.4	6.5'
7'	60.9	20.9	7.6'
8'	46.7	16.0	8.7'
9'	36.9	12.6	9.8'
10'	29.9	10.2	10.9'
11'	24.7	8.5	12.0'
12'	20.7	7.1	13.0'
13'	17.7	6.1	14.1'
14'	15.2	5.2	15.2'
15'	13.3	4.5	16.3'

### Candlepower Distribution (Candelas)

Angle	Candela	Lumens
0°	2986	
5°	2986	285
15°	2467	699
25°	1737	804
35°	904	568
45°	199	154
55°	0	0
65°	0	0
75°	0	0
85°	0	0

**Reflectances:** 80% Ceiling, 50% Walls, 30% Floors

Luminaire Spacing	Room Cavity Ratio		
	RCR1	RCR4	RCR8
5' x 5'	111	90	71
6' x 6'	77	63	50
7' x 7'	57	46	36
8' x 8'	44	35	28
9' x 9'	34	28	22
10' x 10'	28	23	18
11' x 11'	23	19	15
12' x 12'	19	16	12

See Specification Sheet for Photometric Multipliers.

## Ordering Information Rough-in, reflector and accessories each ordered separately.

### Example: L8-28351-LDI

Rough-in	Light Engine Lumens	Color Temperature	Voltage	Options
<b>L8</b>				
13	1300 Lumens (21W)	27 2700K	1 120V	<b>F</b> Fuse and Fuse Holder
New Contr.	15	1500 Lumens (21W)	30 3000K	2 277V <b>CP†§</b> Chicago Plenum
<b>LRM8</b>	17	1700 Lumens (23W)	35 3500K	3§ 347V <b>BR§</b> Emergency Battery Pack
Remodel	23	2300 Lumens (37W)	40 4100K	<b>LDI</b> W/ Remote Test Switch
	28	2800 Lumens (46W)		<b>PD♦</b> Lumen Depreciation Indicator
				Driver compatible with Lutron Programmable Dimming EcoSystem®)

† Consult Factory for Availability

§ New Construction Only

♦ Not Available for 2800 Lumens

Blue highlight indicates ENERGY STAR qualified products.

### Example: L800HW-CQ-WH

Reflector	Color Options	Finish	Options
<b>L800H</b>	<b>C</b> Clear	<b>Low Iridescent Alzak® Finishes:</b>	<b>WH</b> White Flange
Open Reflector, Medium Distribution	<b>G</b> Gold	<b>L</b> Specular	
	<b>WT</b> Wheat	<b>S</b> Satin	
	<b>PT</b> Pewter	<b>Q*</b> Semi-Specular	
	<b>BZ</b> Bronze		
	<b>B</b> Black		
<b>L800HW</b>	<b>W</b> White	Blank for White	
Open Reflector, Wide Distribution			

\* Available in clear only

### Example: HB-TL

(New Construction Only)	Accessories
<b>HB-TL</b>	25" Tru-Lock® grid ceiling bar hangers, Pair
<b>HB-52</b>	52" C-Channel Bar Hangers, Pair
<b>HB-28</b>	28" C-Channel Bar Hangers, Pair
<b>LB-27</b>	27" Linear Bar Hangers, Pair
<b>SCA-*</b>	Sloped Ceiling adapter

\*Angle must be specified when ordering; Available in 5°, 10°, 15°, 20°, 25°, 30°

Example: **SCA8-20**

Indy™ LED Commercial Downlights

> Parabolic



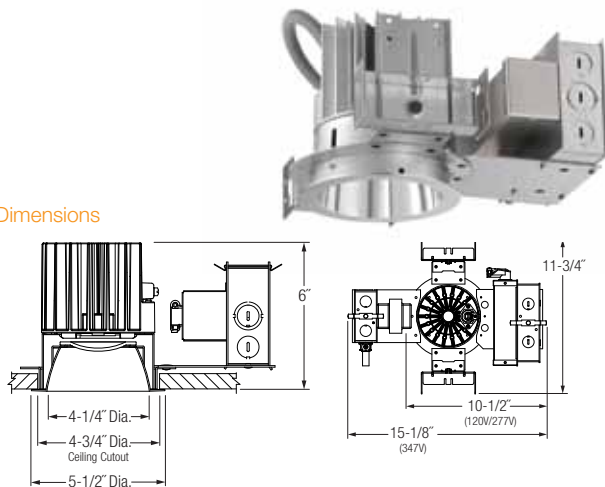


## Table of Contents

4" Parabolic New Construction and Remodel Downlights .....	28
6" Parabolic New Construction and Remodel Downlights .....	30
8" Parabolic New Construction and Remodel Downlights .....	32

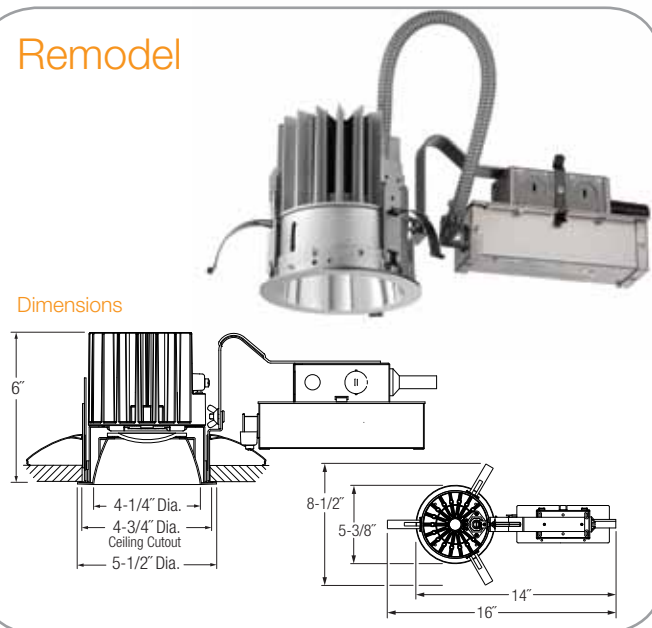
## New Construction

### Dimensions



## Remodel

### Dimensions



## Environmentally friendly, energy efficient

- Lumen packages comparable to 26W, 32W, 42W CFL and 2x26W CFL with energy savings up to 35%
- Superior-quality white LED light output using Chip on Board technology • Indy LED Commercial Downlights have efficacies up to 55 lm/W
- No harmful ultraviolet or infrared wavelengths • No lead or mercury



## Product Specifications

### Optics

#### Reflector

Computer-optimized parabolic reflector with frosted conical lens regressed into the cone • Provides uniform distribution with no striations • Concealed LED array provides superior aesthetic appeal both on and off

- See ordering information for reflector colors and finishes.

### Electrical

#### Light Engine

MADE IN THE USA • Compact light source delivers uniform illumination without pixilation, enabling excellent beam control • Consistent fixture-to-fixture color temperature within 3 MacAdam Ellipses • Replaceable PC board with quick connector mounts directly to heat sink and incorporates the latest generation of high lumen output LEDs • CRI > 80 • Light engine mounts directly to heat sink and is easily replaceable • Cast aluminum heat sink integrated directly with housing provides superior thermal management to ensure the long life of LED.

#### LED Driver

Power factor >0.9 • Dimmable via 0-10V protocol • Easily replaceable from above or below the ceiling.

#### Life

Rated for 50,000 hours at 70% lumen maintenance.

#### Labels and Listings

- UL Listed for feed through and damp locations • I.B.E.W. Union made
- UL and cUL, RoHS compliant • EMI complies with FCC 47, Part 15, Class A • Energy Star qualified, see ordering information for qualified product combinations.

#### Warranty

5 years when used in accordance with manufacturing guidelines.

### Mechanical

#### New Construction

##### Housing

Low profile, universal housing design installs in suspended grid, plaster or drywall • Integral cast aluminum heat sink conducts heat away from LED light engine • Driver is accessible from above and below ceiling.

##### Mounting Frame

Heavy gauge steel lower housing ring accommodates ceilings up to 2" thick • For thicker ceilings; consult factory.

##### Mounting Bracket

Mounting brackets have 3" vertical adjustment and accept proprietary Tru-Lock® bar hangers. 1-1/2" C-channel and flat linear bars (ordered as accessories) or 1/2" EMT, 3/4" and 1-1/2" lathing channel (by others)

- One-piece Tru-Lock® bar hangers have integral T-bar locking screws and alignment notches for locating and locking fixture in the center or 1/4" tile increments.

##### Junction Box

Over size 4" x 6" galvanized steel junction box with (2) 1/2" (2) 3/4" knockouts facilitates quick wiring • Junction box rated for four (4) No. 12 AWG 90° C branch circuit conductors (2-in, 2-out).

### Remodel

#### Housing

Installs from below ceiling in applications where above ceiling access is not available • Secured in place by factory installed remodel springs

- Remodel springs accommodates 1/2" to 1-1/8" ceiling thickness
- Integral cast aluminum heat sink conducts heat away from LED light engine • Driver is accessible from below the ceiling.

#### Junction Box

2" x 3-3/4" galvanized steel junction box with (6) 1/2" knockouts facilitates quick wiring.

## Clear Specular Alzak® Reflector with regressed frosted glass lens 1500 Lumens

**Catalog Number:** L4-1530;  
**L400P-CL**

**PHOTOMETRIC REPORT**

**Test Number:** PR08110191

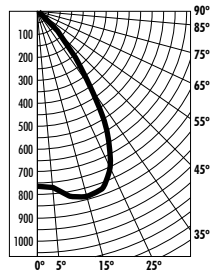
**Total Lumen Output:** 1042 Lumens

**Luminaire Efficacy:** 51 lm/w (3K)

**Luminaire Spacing Criteria:** 1.08

**Luminaire:** Clear Specular Alzak®  
reflector with regressed frosted  
glass lens.

**CIE-Type:** Direct



### Initial Footcandles

Distance to Illuminated Plane (Feet)	Footcandles Beam Center	Footcandles Beam Edge	Beam Diameter
6'	21.3	6.5	8.4'
7'	15.6	4.8	9.8'
8'	12.0	3.6	11.2'
9'	9.5	2.9	12.6'
10'	7.7	2.3	14.0'
11'	6.3	1.9	15.4'
12'	5.3	1.6	16.9'
13'	4.5	1.4	18.3'
14'	3.9	1.2	19.7'
15'	3.4	1.0	21.1'

### Candlepower Distribution (Candelas)

Angle	Candela	Lumens
0°	765	
5°	776	74
15°	846	240
25°	763	353
35°	427	268
45°	125	96
55°	7	6
65°	0	0
75°	0	0
85°	0	0

**Reflectances:** 80% Ceiling, 50% Walls, 30% Floors

Luminaire Spacing	Room Cavity Ratio		
	RCR1	RCR4	RCR8
5' x 5'	46	37	28
6' x 6'	32	25	19
7' x 7'	23	19	14
8' x 8'	18	14	11
9' x 9'	14	11	8
10' x 10'	11	9	7
11' x 11'	9	8	6
12' x 12'	8	6	5

See Specification Sheet for Photometric Multipliers.

## Clear Specular Alzak® Reflector with regressed frosted glass lens 2800 Lumens

**Catalog Number:** L4-2830;  
**L400P-CL**

**PHOTOMETRIC REPORT**

**Test Number:** PR08110291

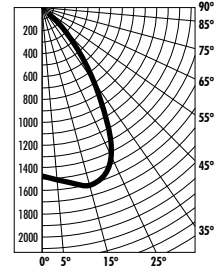
**Total Lumen Output:** 2001 Lumens

**Luminaire Efficacy:** 44 lm/w (3K)

**Luminaire Spacing Criteria:** 1.07

**Luminaire:** Clear Specular Alzak®  
reflector with regressed frosted  
glass lens.

**CIE-Type:** Direct



### Initial Footcandles

Distance to Illuminated Plane (Feet)	Footcandles Beam Center	Footcandles Beam Edge	Beam Diameter
6'	41.0	12.4	8.4'
7'	30.1	9.1	9.8'
8'	23.1	7.0	11.2'
9'	18.2	5.5	12.6'
10'	14.8	4.5	14.0'
11'	12.2	3.7	15.4'
12'	10.3	3.1	16.8'
13'	8.7	2.6	18.2'
14'	7.5	2.3	19.6'
15'	6.6	2.0	21.0'

### Candlepower Distribution (Candelas)

Angle	Candela	Lumens
0°	1477	
5°	1505	144
15°	1609	456
25°	1450	671
35°	814	511
45°	235	182
55°	30	27
65°	4	4
75°	6	6
85°	0	0

**Reflectances:** 80% Ceiling, 50% Walls, 30% Floors

Luminaire Spacing	Room Cavity Ratio		
	RCR1	RCR4	RCR8
5' x 5'	88	71	53
6' x 6'	61	49	37
7' x 7'	45	36	27
8' x 8'	34	28	21
9' x 9'	27	22	16
10' x 10'	22	18	13
11' x 11'	18	15	11
12' x 12'	15	12	9

See Specification Sheet for Photometric Multipliers.

## Ordering Information Rough-in, reflector and accessories each ordered separately.

### Example: L4-15301-BR

Rough-in	Light Engine Lumens	Color Temperature	Voltage	Options
<b>L4</b>				
<b>L4</b>	<b>13</b> 1300 Lumens (21W)	<b>27</b> 2700K	<b>1</b> 120V	<b>F</b> Fuse and Fuse Holder
New	<b>15</b> 1500 Lumens (21W)	<b>30</b> 3000K	<b>2</b> 277V	<b>CP†§</b> Chicago Plenum
Contr.				<b>BR§</b> Emergency Battery Pack
<b>LRM4</b>	<b>17</b> 1700 Lumens (23W)	<b>35</b> 3500K	<b>3§</b> 347V	<b>LDI</b> W/ Remote Test Switch
Remodel	<b>23</b> 2300 Lumens (37W)	<b>40</b> 4100K		Lumen Depreciation
	<b>28</b> 2800 Lumens (46W)			Indicator
				<b>PD♦</b> Driver compatible with
				Lutron Programmable
				Dimming EcoSystem®)

† Consult Factory for Availability

§ New Construction Only

♦ Not Available for 2800 Lumens

Orange highlight indicates ENERGY STAR qualified products.

### Example: L400P-CQ-WH

Reflector	Color Options	Finish	Options
<b>L400P</b>	<b>C</b> Clear	<b>Low Iridescent</b>	<b>WH</b> White Flange
Open	<b>G</b> Gold	<b>Alzak® Finishes:</b>	<b>WET</b> Wet Location
Reflector	<b>WT</b> Wheat	<b>L</b> Specular	Listing
	<b>PT</b> Pewter	<b>S</b> Satin	
<b>L400B</b>	<b>BZ</b> Bronze	<b>Q*</b> Semi-Specular	
Black Baffle	<b>B</b> Black		
	<b>W</b> White	Blank for white & baffle	

\* Available in clear only

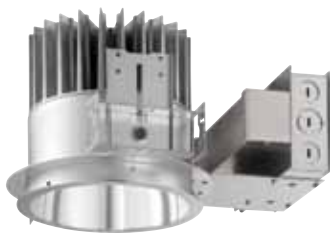
### Example: HB-TL

(New Construction Only)	
Accessories	
<b>HB-TL</b>	25" Tru-Lock® grid ceiling bar hangers, Pair
<b>HB-52</b>	52" C-Channel Bar Hangers, Pair
<b>HB-28</b>	28" C-Channel Bar Hangers, Pair
<b>LB-27</b>	27" Linear Bar Hangers, Pair
<b>SCA-*</b>	Sloped Ceiling adapter

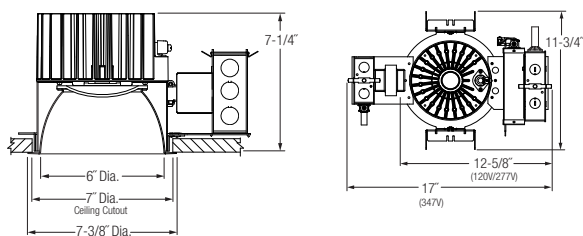
\*Angle must be specified when ordering:  
Available in 5°, 10°, 15°, 20°, 25°, 30°

Example: **SCA4-20**

## New Construction



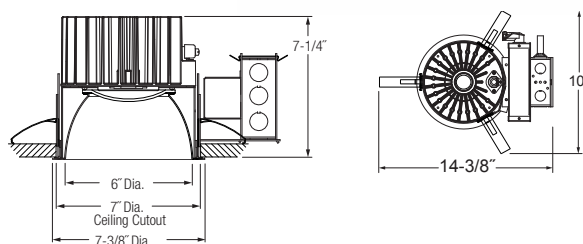
Dimensions



## Remodel



Dimensions



## Environmentally friendly, energy efficient

- Lumen packages comparable to 26W, 32W, 42W CFL and 2x26W CFL with energy savings up to 35%
- Superior-quality white LED light output using Chip on Board technology • Indy LED Commercial Downlights have efficacies up to 55 lm/W
- No harmful ultraviolet or infrared wavelengths • No lead or mercury



## Product Specifications

## Optics

## Reflector

Computer-optimized parabolic reflector with frosted conical lens regressed into the cone • Provides uniform distribution with no striations • Concealed LED array provides superior aesthetic appeal both on and off

- See ordering information for reflector colors and finishes.

## Electrical

## Light Engine

MADE IN THE USA • Compact light source delivers uniform illumination without pixilation, enabling excellent beam control • Consistent fixture-to-fixture color temperature within 3 MacAdam Ellipses • Replaceable PC board with quick connector mounts directly to heat sink and incorporates the latest generation of high lumen output LEDs • CRI > 80 • Light engine mounts directly to heat sink and is easily replaceable • Cast aluminum heat sink integrated directly with housing provides superior thermal management to ensure the long life of LED.

## LED Driver

Power factor >0.9 • Dimmable via 0-10V protocol • Easily replaceable from above or below the ceiling.

## Life

Rated for 50,000 hours at 70% lumen maintenance.

## Labels and Listings

- UL Listed for feed through and damp locations • I.B.E.W. Union made
- UL and cUL, RoHS compliant • EMI complies with FCC 47, Part 15, Class A • Energy Star qualified, see ordering information for qualified product combinations.

## Warranty

5 years when used in accordance with manufacturing guidelines.

## Mechanical

## New Construction

## Housing

Low profile, universal housing design installs in suspended grid, plaster or drywall • Integral cast aluminum heat sink conducts heat away from LED light engine • Driver is accessible from above and below ceiling.

## Mounting Frame

Heavy gauge steel lower housing ring accommodates ceilings up to 2" thick • For thicker ceilings; consult factory.

## Mounting Bracket

Mounting brackets have 3" vertical adjustment and accept proprietary Tru-Lock® bar hangers. 1-1/2" C-channel and flat linear bars (ordered as accessories) or 1/2" EMT, 3/4" and 1-1/2" lathing channel (by others)

- One-piece Tru-Lock® bar hangers have integral T-bar locking screws and alignment notches for locating and locking fixture in the center or 1/4" tile increments.

## Junction Box

Over size 4" x 6" galvanized steel junction box with (2) 1/2" (2) 3/4" knockouts facilitates quick wiring • Junction box rated for four (4) No. 12 AWG 90° C branch circuit conductors (2-in, 2-out).

## Remodel

## Housing

Installs from below ceiling in applications where above ceiling access is not available • Secured in place by factory installed remodel springs

- Remodel springs accommodates 1/2" to 1-1/8" ceiling thickness
- Integral cast aluminum heat sink conducts heat away from LED light engine • Driver is accessible from below the ceiling.

## Junction Box

4" x 4" galvanized steel junction box with (4) 1/2" (2) 3/4" knockouts facilitates quick wiring.

## Clear Specular Alzak® Reflector with regressed frosted glass lens 1500 Lumens

**Catalog Number:** L6-1730;  
**L600P-CL**

**PHOTOMETRIC REPORT**

**Test Number:** PR08110891

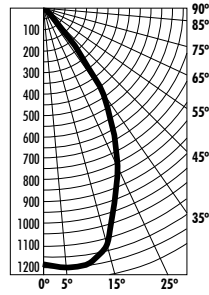
**Total Lumen Output:** 1180 Lumens

**Luminaire Efficacy:** 53 lm/w (3K)

**Luminaire Spacing Criteria:** 0.95

**Luminaire:** Clear Specular Alzak®  
reflector with regressed frosted  
glass lens.

**CIE-Type:** Direct



### Initial Footcandles

Distance to Illuminated Plane (Feet)	Footcandles Beam Center	Footcandles Beam Edge	Beam Diameter
6'	33.2	10.3	7.5'
7'	24.4	7.6	8.7'
8'	18.7	5.8	10.0'
9'	14.7	4.6	11.2'
10'	11.9	3.7	12.5'
11'	9.9	3.1	13.7'
12'	8.3	2.6	15.0'
13'	7.1	2.2	16.2'
14'	6.1	1.9	17.5'
15'	5.3	1.6	18.7'

### Candlepower Distribution (Candelas)

Angle	Candela	Lumens
0°	1194	
5°	1204	115
15°	1142	324
25°	831	385
35°	472	297
45°	67	52
55°	3	3
65°	3	3
75°	1	1
85°	1	1

**Reflectances:** 80% Ceiling, 50% Walls, 30% Floors

Luminaire Spacing	Room Cavity Ratio		
	RCR1	RCR4	RCR8
5' x 5'	52	42	33
6' x 6'	36	30	23
7' x 7'	27	22	17
8' x 8'	20	17	13
9' x 9'	16	13	10
10' x 10'	13	11	8
11' x 11'	11	9	7
12' x 12'	9	7	6

See Specification Sheet for Photometric Multipliers.

## Clear Specular Alzak® Reflector with regressed frosted glass lens 2800 Lumens

**Catalog Number:** L6-2830;  
**L600P-CL**

**PHOTOMETRIC REPORT**

**Test Number:** PR08111091

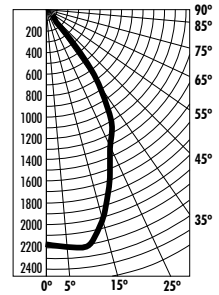
**Total Lumen Output:** 2118 Lumens

**Luminaire Efficacy:** 46 lm/w (3K)

**Luminaire Spacing Criteria:** 0.93

**Luminaire:** Clear Specular Alzak®  
reflector with regressed frosted  
glass lens.

**CIE-Type:** Direct



### Initial Footcandles

Distance to Illuminated Plane (Feet)	Footcandles Beam Center	Footcandles Beam Edge	Beam Diameter
6'	60.9	19.0	7.4'
7'	44.7	13.9	8.7'
8'	34.2	10.7	9.9'
9'	27.1	8.4	11.2'
10'	21.9	6.8	12.4'
11'	18.1	5.6	13.7'
12'	15.2	4.7	14.9'
13'	13.0	4.0	16.1'
14'	11.2	3.5	17.4'
15'	9.7	3.0	18.6'

### Candlepower Distribution (Candelas)

Angle	Candela	Lumens
0°	2192	
5°	2206	211
15°	2048	581
25°	1470	681
35°	845	531
45°	134	104
55°	4	4
65°	0	0
75°	0	0
85°	0	0

**Reflectances:** 80% Ceiling, 50% Walls, 30% Floors

Luminaire Spacing	Room Cavity Ratio		
	RCR1	RCR4	RCR8
5' x 5'	94	76	59
6' x 6'	65	53	41
7' x 7'	48	39	30
8' x 8'	37	30	23
9' x 9'	29	24	18
10' x 10'	24	19	15
11' x 11'	19	16	12
12' x 12'	16	13	10

See Specification Sheet for Photometric Multipliers.

## Ordering Information Rough-in, reflector and accessories each ordered separately.

### Example: L6-17271-LDI

Rough-in	Light Engine Lumens	Color Temperature	Voltage	Options
<b>L6</b>				
New	13 1300 Lumens (21W)	27 2700K	1 120V	F Fuse and Fuse Holder
Contr.	15 1500 Lumens (21W)	30 3000K	2 277V	CP† Emergency Battery Pack
				BR\$ W/ Remote Test Switch
<b>LRM6</b>	17 1700 Lumens (23W)	35 3500K	3\$ 347V	LDI Lumen Depreciation
Remodel	23 2300 Lumens (37W)	40 4100K		Indicator
	28 2800 Lumens (46W)			PD♦ Driver compatible with
				Lutron Programmable
				Dimming EcoSystem®)

† Consult Factory for Availability

\$ New Construction Only

♦ Not Available for 2800 Lumens

Orange highlight indicates ENERGY STAR qualified products.

### Example: L600P-CQ-WH

Reflector	Color Options	Finish	Options
<b>L600P</b>	C Clear	<b>Low Iridescent</b>	<b>WH</b> White Flange
Open	G Gold	<b>Alzak® Finishes:</b>	<b>WET</b> Wet Location
Reflector	WT Wheat	L Specular	Listing
	PT Pewter	S Satin	
<b>L600B</b>	BZ Bronze	Q* Semi-Specular	
Black Baffle	B Black		
	W White	Blank for white and baffle	

\* Available in clear only

### Example: HB-TL

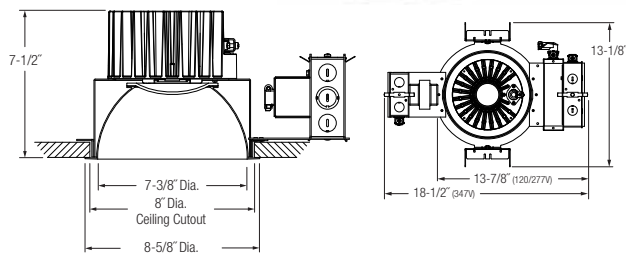
(New Construction Only)	
Accessories	
<b>HB-TL</b>	25" Tru-Lock® grid ceiling bar hangers, Pair
<b>HB-52</b>	52" C-Channel Bar Hangers, Pair
<b>HB-28</b>	28" C-Channel Bar Hangers, Pair
<b>LB-27</b>	27" Linear Bar Hangers, Pair
<b>SCA-*</b>	Sloped Ceiling adapter

\*Angle must be specified when ordering; Available in 5°, 10°, 15°, 20°, 25°, 30°

Example: **SCA6-20**

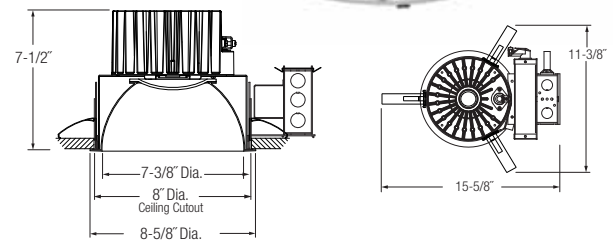
## New Construction

## Dimensions



## Remodel

## Dimensions



## Environmentally friendly, energy efficient

- Lumen packages comparable to 26W, 32W, 42W CFL and 2x26W CFL with energy savings up to 35%
- Superior-quality white LED light output using Chip on Board technology
- Indy LED Commercial Downlights have efficacies up to 55 lm/W
- No harmful ultraviolet or infrared wavelengths • No lead or mercury



## Product Specifications

## Optics

## Reflector

Computer-optimized parabolic reflector with frosted conical lens regressed into the cone • Provides uniform distribution with no striations • Concealed LED array provides superior aesthetic appeal both on and off

- See ordering information for reflector colors and finishes.

## Electrical

## Light Engine

MADE IN THE USA • Compact light source delivers uniform illumination without pixilation, enabling excellent beam control • Consistent fixture-to-fixture color temperature within 3 MacAdam Ellipses • Replaceable PC board with quick connector mounts directly to heat sink and incorporates the latest generation of high lumen output LEDs • CRI > 80 • Light engine mounts directly to heat sink and is easily replaceable • Cast aluminum heat sink integrated directly with housing provides superior thermal management to ensure the long life of LED.

## LED Driver

Power factor > 0.9 • Dimmable via 0-10V protocol • Easily replaceable from above or below the ceiling.

## Life

Rated for 50,000 hours at 70% lumen maintenance.

## Labels and Listings

- UL Listed for feed through and damp locations • I.B.E.W. Union made
- UL and cUL, RoHS compliant • EMI complies with FCC 47, Part 15, Class A • Energy Star qualified, see ordering information for qualified product combinations.

## Warranty

5 years when used in accordance with manufacturing guidelines.

## Mechanical

## New Construction

## Housing

Low profile, universal housing design installs in suspended grid, plaster or drywall • Integral cast aluminum heat sink conducts heat away from LED light engine • Driver is accessible from above and below ceiling.

## Mounting Frame

Heavy gauge steel lower housing ring accommodates ceilings up to 2" thick • For thicker ceilings; consult factory.

## Mounting Bracket

Mounting brackets have 3" vertical adjustment and accept proprietary Tru-Lock® bar hangers. 1-1/2" C-channel and flat linear bars (ordered as accessories) or 1/2" EMT, 3/4" and 1-1/2" lathing channel (by others)

- One-piece Tru-Lock® bar hangers have integral T-bar locking screws and alignment notches for locating and locking fixture in the center or 1/4" tile increments.

## Junction Box

Over size 4" x 6" galvanized steel junction box with (6) 1/2" (2) 3/4" knockouts facilitates quick wiring • Junction box rated for four (4) No. 12 AWG 90° C branch circuit conductors (2-in, 2-out).

## Remodel

## Housing

Installs from below ceiling in applications where above ceiling access is not available • Secured in place by factory installed remodel springs

- Remodel springs accommodates 1/2" to 1-1/8" ceiling thickness
- Integral cast aluminum heat sink conducts heat away from LED light engine • Driver is accessible from below the ceiling.

## Junction Box

4" x 4" galvanized steel junction box with (4) 1/2" (2) 3/4" knockouts facilitates quick wiring.

## Clear Specular Alzak® Reflector with regressed frosted glass lens 1500 Lumens

**Catalog Number:** L8-1730;  
**L800P-CL**

**PHOTOMETRIC REPORT**

**Test Number:** PR01121097

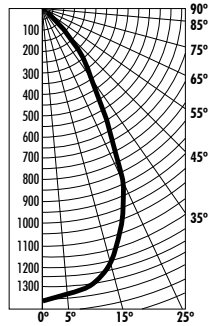
**Total Lumen Output:** 1255 Lumens

**Luminaire Efficacy:** 56 lm/w (3K)

**Luminaire Spacing Criteria:** 0.89

**Luminaire:** Clear Specular Alzak®  
reflector with regressed frosted  
glass lens.

**CIE-Type:** Direct



### Initial Footcandles

Distance to Illuminated Plane (Feet)	Footcandles Beam Center	Footcandles Beam Edge	Beam Diameter
6'	38.0	12.8	6.6'
7'	27.9	9.4	7.7'
8'	21.4	7.2	8.8'
9'	16.9	5.7	9.9'
10'	13.7	4.6	11.0'
11'	11.3	3.8	12.1'
12'	9.5	3.2	13.2'
13'	8.1	2.7	14.3'
14'	7.0	2.4	15.4'
15'	6.1	2.0	16.5'

### Candlepower Distribution (Candelas)

Angle	Candela	Lumens
0°	1369	
5°	1343	128
15°	1234	350
25°	898	415
35°	399	251
45°	137	106
55°	0	0
65°	0	0
75°	0	0
85°	0	0

**Reflectances:** 80% Ceiling, 50% Walls, 30% Floors

Luminaire Spacing	Room Cavity Ratio		
	RCR1	RCR4	RCR8
5' x 5'	56	45	35
6' x 6'	39	31	24
7' x 7'	28	23	18
8' x 8'	22	18	14
9' x 9'	17	14	11
10' x 10'	14	11	9
11' x 11'	12	9	7
12' x 12'	10	8	6

See Specification Sheet for Photometric Multipliers.

## Clear Specular Alzak® Reflector with regressed frosted glass lens 2800 Lumens

**Catalog Number:** L8-2830;  
**L800P-CL**

**PHOTOMETRIC REPORT**

**Test Number:** PR01120992

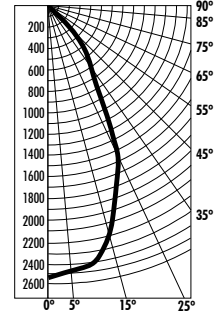
**Total Lumen Output:** 2216 Lumens

**Luminaire Efficacy:** 48 lm/w (3K)

**Luminaire Spacing Criteria:** 0.87

**Luminaire:** Clear Specular Alzak®  
reflector with regressed frosted  
glass lens.

**CIE-Type:** Direct



### Initial Footcandles

Distance to Illuminated Plane (Feet)	Footcandles Beam Center	Footcandles Beam Edge	Beam Diameter
6'	71.1	24.3	6.4'
7'	52.2	17.9	7.5'
8'	40.0	13.7	8.6'
9'	31.6	10.8	9.7'
10'	25.6	8.8	10.7'
11'	21.2	7.2	11.8'
12'	17.8	6.1	12.9'
13'	15.1	5.2	14.0'
14'	13.1	4.5	15.0'
15'	11.4	3.9	16.1'

### Candlepower Distribution (Candelas)

Angle	Candela	Lumens
0°	2560	
5°	2485	237
15°	2214	628
25°	1593	737
35°	685	430
45°	236	183
55°	0	0
65°	0	0
75°	0	0
85°	0	0

**Reflectances:** 80% Ceiling, 50% Walls, 30% Floors

Luminaire Spacing	Room Cavity Ratio		
	RCR1	RCR4	RCR8
5' x 5'	98	80	62
6' x 6'	68	55	43
7' x 7'	50	41	32
8' x 8'	38	31	24
9' x 9'	30	25	19
10' x 10'	25	20	16
11' x 11'	20	16	13
12' x 12'	17	14	11

See Specification Sheet for Photometric Multipliers.

## Ordering Information Rough-in, reflector and accessories each ordered separately.

### Example: L8-28351-LDI

Rough-in	Light Engine Lumens	Color Temperature	Voltage	Options
<b>L8</b>				
New	13 1300 Lumens (21W)	27 2700K	1 120V	F Fuse and Fuse Holder
Contr.	15 1500 Lumens (21W)	30 3000K	2 277V	CP† Chicago Plenum
				BR‡ Emergency Battery Pack
<b>LRM8</b>	17 1700 Lumens (23W)	35 3500K	3§ 347V	LDI Lumen Depreciation Indicator
Remodel	23 2300 Lumens (37W)	40 4100K		PD♦ Driver compatible with Lutron Programmable Dimming EcoSystem®)
	28 2800 Lumens (46W)			

† Consult Factory for Availability

§ New Construction Only

♦ Not Available for 2800 Lumens

Orange highlight indicates ENERGY STAR qualified products.

### Example: L800P-CQ-WH

Reflector	Color Options	Finish	Options
<b>L800P</b>	<b>C</b> Clear	<b>Low Iridescent</b>	<b>WH</b> White Flange
Open Reflector	<b>G</b> Gold	<b>Alzak® Finishes:</b>	<b>WET</b> Wet Location Listing
	<b>WT</b> Wheat	<b>L</b> Specular	
	<b>PT</b> Pewter	<b>S</b> Satin	
	<b>BZ</b> Bronze	<b>Q*</b> Semi-Specular	
<b>L800B</b>	<b>B</b> Black		
Baffle	<b>W</b> White	Blank for white and baffle	

\* Available in clear only

### Example: HB-TL

(New Construction Only)	
Accessories	
<b>HB-TL</b>	25" Tru-Lock® grid ceiling bar hangers, Pair
<b>HB-52</b>	52" C-Channel Bar Hangers, Pair
<b>HB-28</b>	28" C-Channel Bar Hangers, Pair
<b>LB-27</b>	27" Linear Bar Hangers, Pair
<b>SCA-*</b>	Sloped Ceiling adapter

\*Angle must be specified when ordering; Available in 5°, 10°, 15°, 20°, 25°, 30°

Example: **SCA8-20**

Indy™ LED Commercial Downlights

# > Wall Wash





## Table of Contents

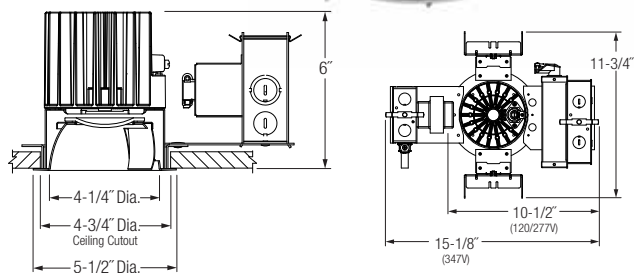
4" New Construction and Remodel Wall Washers ..... 36

6" New Construction and Remodel Wall Washers ..... 38

8" New Construction and Remodel Wall Washers ..... 40

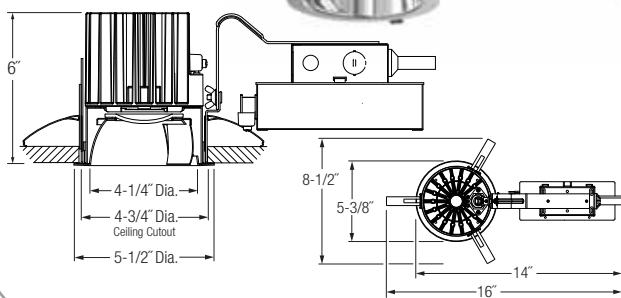
## New Construction

## Dimensions



## Remodel

## Dimensions



## Environmentally friendly, energy efficient

- Lumen packages comparable to 26W, 32W, 42W CFL and 2x26W CFL with energy savings up to 35%
- Superior-quality white LED light output using Chip on Board technology
- No harmful ultraviolet or infrared wavelengths • No lead or mercury

## Product Specifications

## Optics

## Reflector

Computer-optimized parabolic trim with integral wall wash kicker and frosted conical lens regressed into cone provides uniform distribution with no striations • Concealed LED array provides superior aesthetic appeal both on and off • See ordering information for reflector colors and finishes.

## Electrical

## Light Engine

MADE IN THE USA • Compact light source delivers uniform illumination without pixilation, enabling excellent beam control • Consistent fixture-to-fixture color temperature within 3 MacAdam Ellipses • Replaceable PC board with quick connector mounts directly to heat sink and incorporates the latest generation of high lumen output LEDs • CRI > 80 • Light engine mounts directly to heat sink and is easily replaceable • Cast aluminum heat sink integrated directly with housing provides superior thermal management to ensure the long life of LED.

## LED Driver

Power factor > 0.9 • Dimmable via 0-10V protocol • Easily replaceable from above or below the ceiling.

## Life

Rated for 50,000 hours at 70% lumen maintenance.

## Labels and Listings

- UL Listed for feed through and damp locations • I.B.E.W. Union made
- UL and cUL, RoHS compliant • EMI complies with FCC 47, Part 15, Class A

## Warranty

5 years when used in accordance with manufacturing guidelines.

## Mechanical

## New Construction

## Housing

Low profile, universal housing design installs in suspended grid, plaster or drywall • Integral cast aluminum heat sink conducts heat away from LED light engine • Driver is accessible from above and below ceiling.

## Mounting Frame

Heavy gauge steel lower housing ring accommodates ceilings up to 2" thick • For thicker ceilings; consult factory.

## Mounting Bracket

Mounting brackets have 3" vertical adjustment and accept proprietary Tru-Lock® bar hangers. 1-1/2" C-channel and flat linear bars (ordered as accessories) or 1/2" EMT, 3/4" and 1-1/2" lathing channel (by others) • One-piece Tru-Lock® bar hangers have integral T-bar locking screws and alignment notches for locating and locking fixture in the center or 1/4" tile increments.

## Junction Box

Over size 4" x 6" galvanized steel junction box with (6) 1/2" (2) 3/4" knockouts facilitates quick wiring • Junction box rated for four (4) No. 12 AWG 90° C branch circuit conductors (2-in, 2-out).

## Remodel

## Housing

Installs from below ceiling in applications where above ceiling access is not available • Secured in place by factory installed remodel springs • Remodel springs accommodates 1/2" to 1-1/8" ceiling thickness • Integral cast aluminum heat sink conducts heat away from LED light engine • Driver is accessible from below the ceiling.

## Junction Box

2" x 3-3/4" galvanized steel junction box with (4) 1/2" (2) 3/4" knockouts facilitates quick wiring.

## Performance Data

### Luminaires Spaced 2' from Wall

Catalog Number: L4-2840+L400WS-CQ

Spread: Single Wall

Single Unit						Lamp	Multiple Units On 2' Centers*			Multiple Units On 3' Centers*			Multiple Units On 4' Centers*		
Lateral Distance from Fixture 2' to Wall						BXRA N4000 4100K	Spaced 2' From Wall			Spaced 2' From Wall			Spaced 2' From Wall		
0'	1'	2'	3'	4'	5'	Distance From Ceiling	CL	CL	CL	CL	CL	CL	CL	CL	CL
25	17	7	3	2	2	1'	40	38	40	30	24	30	27	14	27
38	27	12	5	3	2	2'	64	62	64	48	39	48	42	24	42
37	29	14	6	3	3	3'	67	68	67	48	45	48	42	29	42
24	21	15	8	4	3	4'	56	55	56	38	40	38	29	30	29
16	14	12	8	5	3	5'	44	44	44	31	31	31	23	25	23
11	11	9	8	5	4	6'	36	36	36	26	26	26	20	20	20
9	8	8	6	5	4	7'	30	30	30	22	23	22	17	17	17
7	7	6	5	5	4	8'	25	26	25	20	19	20	15	14	15
5	5	5	4	4	4	9'	20	20	20	15	16	15	12	11	12

\*Based on minimum of five luminaires. Reflectances: 80, 50, 20. Values are rounded to nearest whole footcandle.

### Luminaires Spaced 3' from Wall

Catalog Number: L4-2840+L400WS-CQ

Spread: Single Wall

Single Unit						Lamp	Multiple Units On 3' Centers*			Multiple Units On 4' Centers*			Multiple Units On 5' Centers*		
Lateral Distance from Fixture 3' to Wall						BXRA N4000 4100K	Spaced 3' From Wall			Spaced 3' From Wall			Spaced 3' From Wall		
0'	1'	2'	3'	4'	5'	Distance From Ceiling	CL	CL	CL	CL	CL	CL	CL	CL	CL
10	8	5	3	2	2	1'	15	15	15	13	12	13	11	8	11
17	15	10	6	4	3	2'	28	28	28	23	21	23	20	14	20
19	16	11	7	4	3	3'	32	31	32	26	23	26	23	16	23
19	17	12	7	5	4	4'	33	33	33	27	25	27	23	19	23
15	14	12	8	5	4	5'	31	31	31	24	25	24	20	19	20
12	11	10	8	6	4	6'	27	28	27	21	22	21	17	18	17
10	9	8	7	6	5	7'	24	25	24	19	19	19	15	15	15
8	7	7	6	5	5	8'	21	22	21	17	17	17	14	13	14
6	6	5	5	4	4	9'	18	18	18	14	14	14	12	11	12

\*Based on minimum of five luminaires. Reflectances: 80, 50, 20. Values are rounded to nearest whole footcandle.

See Specification Sheet for Photometric Multipliers.

## Ordering Information Rough-in, reflector and accessories each ordered separately.

### Example: L4-13351

Rough-in	Light Engine Lumens	Color Temperature	Voltage	Options
<b>L4</b>				
<b>L4</b>	<b>13</b> 1300 Lumens (21W)	<b>27</b> 2700K	<b>1</b> 120V	<b>F</b> Fuse and Fuse Holder
New Contr.	<b>15</b> 1500 Lumens (21W)	<b>30</b> 3000K	<b>2</b> 277V	<b>CP†</b> Chicago Plenum
	<b>17</b> 1700 Lumens (23W)	<b>35</b> 3500K	<b>3</b> 347V	<b>BR</b> Emergency Battery Pack
Remodel	<b>23</b> 2300 Lumens (37W)	<b>40</b> 4100K		<b>W/ Remote Test Switch</b>
	<b>28</b> 2800 Lumens (46W)			<b>LDI</b> Lumen Depreciation Indicator
				<b>PD♦</b> Driver compatible with Lutron Programmable Dimming EcoSystem®)

† Consult Factory for Availability

§ New Construction Only

♦ Not Available for 2800 Lumens

### Example: L400WS-CQ

Reflector	Color Options	Finish	Options
<b>L400WS</b>	<b>C</b> Clear	<b>Low Iridescent</b>	<b>WH</b> White Flange
Wall Wash	<b>G</b> Gold	<b>Alzak® Finishes:</b>	
	<b>WT</b> Wheat	<b>L</b> Specular	
	<b>PT</b> Pewter	<b>S</b> Satin	
	<b>BZ</b> Bronze	<b>Q*</b> Semi-Specular	
	<b>B</b> Black		
	<b>W</b> White	Blank for White	

\* Available in clear only

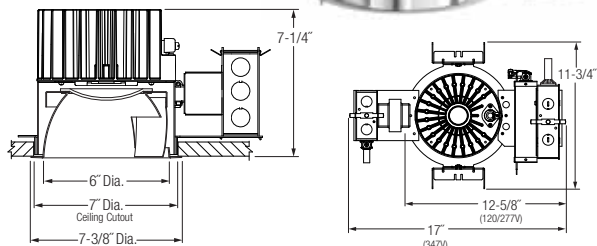
### Example: HB-TL

(New Construction Only)

Accessories
<b>HB-TL</b> 25" Tru-Lock® grid ceiling bar hangers, Pair
<b>HB-52</b> 52" C-Channel Bar Hangers, Pair
<b>HB-28</b> 28" C-Channel Bar Hangers, Pair
<b>LB-27</b> 27" Linear Bar Hangers, Pair

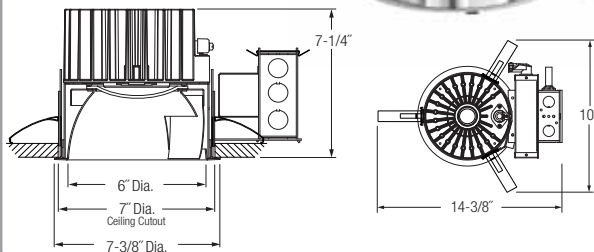
## New Construction

Dimensions



## Remodel

Dimensions



## Environmentally friendly, energy efficient

- Lumen packages comparable to 26W, 32W, 42W CFL and 2x26W CFL with energy savings up to 35%
- Superior-quality white LED light output using Chip on Board technology
- No harmful ultraviolet or infrared wavelengths • No lead or mercury

## Product Specifications

## Optics

## Reflector

Computer-optimized parabolic trim with integral wall wash kicker and frosted conical lens regressed into cone provides uniform distribution with no striations • Concealed LED array provides superior aesthetic appeal both on and off • See ordering information for reflector colors and finishes.

## Electrical

## Light Engine

MADE IN THE USA • Compact light source delivers uniform illumination without pixilation, enabling excellent beam control • Consistent fixture-to-fixture color temperature within 3 MacAdam Ellipses • Replaceable PC board with quick connector mounts directly to heat sink and incorporates the latest generation of high lumen output LEDs • CRI > 80 • Light engine mounts directly to heat sink and is easily replaceable • Cast aluminum heat sink integrated directly with housing provides superior thermal management to ensure the long life of LED. Universal driver accommodates input voltages of 120V to 277V input volts AC at 50/60Hz • Power factor > 0.9 • Dimmable via 0-10V protocol, increasing efficiency up to 30% while dimming • Easily replaceable from above or below the ceiling.

## LED Driver

Power factor > 0.9 • Dimmable via 0-10V protocol • Easily replaceable from above or below the ceiling.

## Life

Rated for 50,000 hours at 70% lumen maintenance.

## Labels and Listings

- UL Listed for feed through and damp locations • I.B.E.W. Union made
- UL and cUL, RoHS compliant • EMI complies with FCC 47, Part 15, Class A

## Warranty

5 years when used in accordance with manufacturing guidelines.

## Mechanical

## New Construction

## Housing

Low profile, universal housing design installs in suspended grid, plaster or drywall • Integral cast aluminum heat sink conducts heat away from LED light engine • Driver is accessible from above and below ceiling.

## Mounting Frame

Heavy gauge steel lower housing ring accommodates ceilings up to 2" thick • For thicker ceilings; consult factory.

## Mounting Bracket

Mounting brackets have 3" vertical adjustment and accept proprietary Tru-Lock® bar hangers. 1-1/2" C-channel and flat linear bars (ordered as accessories) or 1/2" EMT, 3/4" and 1-1/2" lathing channel (by others) • One-piece Tru-Lock® bar hangers have integral T-bar locking screws and alignment notches for locating and locking fixture in the center or 1/4" tile increments.

## Junction Box

Over size 4" x 6" galvanized steel junction box with (6) 1/2" (2) 3/4" knockouts facilitates quick wiring • Junction box rated for four (4) No. 12 AWG 90° C branch circuit conductors (2-in, 2-out).

## Remodel

## Housing

Installs from below ceiling in applications where above ceiling access is not available • Secured in place by factory installed remodel springs • Remodel springs accommodates 1/2" to 1-1/8" ceiling thickness • Integral cast aluminum heat sink conducts heat away from LED light engine • Driver is accessible from below the ceiling.

## Junction Box

4" x 4" galvanized steel junction box with (4) 1/2" (2) 3/4" knockouts facilitates quick wiring.

## Performance Data

### Luminaires Spaced 2' from Wall Catalog Number: L6-2840+L600WS-CQ Spread: Single Wall

Single Unit						Lamp	Multiple Units On 2' Centers*			Multiple Units On 3' Centers*			Multiple Units On 4' Centers*		
Lateral Distance from Fixture 2' to Wall						BXRA N4000 4100K	Spaced 2' From Wall			Spaced 2' From Wall			Spaced 2' From Wall		
0'	1'	2'	3'	4'	5'	Distance From Ceiling	CL	CL	CL	CL	CL	CL	CL	CL	CL
26	19	9	4	2	2	1'	45	43	45	33	28	33	29	18	29
31	23	12	5	3	2	2'	57	56	57	41	36	41	36	23	36
31	24	13	6	3	3	3'	56	56	56	41	38	41	35	25	35
23	20	14	7	4	3	4'	52	52	52	36	38	36	28	28	28
16	15	12	8	5	3	5'	44	44	44	31	31	31	23	25	23
13	11	10	8	5	4	6'	38	38	38	27	27	27	21	20	21
10	9	8	7	5	4	7'	33	33	33	24	24	24	19	18	19
8	8	7	6	5	4	8'	28	28	28	21	21	21	18	15	18
6	6	5	5	4	4	9'	23	23	23	17	17	17	13	12	13

\*Based on minimum of five luminaires. Reflectances: 80, 50, 20. Values are rounded to nearest whole footcandle.

### Luminaires Spaced 3' from Wall Catalog Number: L6-2840+L600WS-CQ Spread: Single Wall

Single Unit						Lamp	Multiple Units On 3' Centers*			Multiple Units On 4' Centers*			Multiple Units On 5' Centers*		
Lateral Distance from Fixture 3' to Wall						BXRA N4000 4100K	Spaced 3' From Wall			Spaced 3' From Wall			Spaced 3' From Wall		
0'	1'	2'	3'	4'	5'	Distance From Ceiling	CL	CL	CL	CL	CL	CL	CL	CL	CL
11	9	6	4	3	2	1'	18	18	18	15	14	15	12	7	12
16	14	10	6	4	3	2'	29	27	29	23	21	23	18	11	18
15	13	10	7	4	3	3'	28	28	28	22	21	22	17	11	17
16	14	10	7	5	3	4'	28	28	28	22	22	22	18	12	18
14	13	10	7	5	4	5'	28	28	28	22	22	22	16	13	16
12	11	10	8	6	4	6'	27	27	27	21	21	21	14	14	14
10	9	9	7	6	5	7'	25	25	25	19	19	19	13	13	13
8	8	7	6	5	5	8'	22	23	22	18	18	18	12	11	12
7	6	6	5	5	4	9'	19	19	19	15	15	15	10	9	10

\*Based on minimum of five luminaires. Reflectances: 80, 50, 20. Values are rounded to nearest whole footcandle.

See Specification Sheet for Photometric Multipliers.

## Ordering Information Rough-in, reflector and accessories each ordered separately.

### Example: L6-13351

Rough-in	Light Engine Lumens	Color Temperature	Voltage	Options
<b>L6</b>				
<b>L6</b>	<b>13</b> 1300 Lumens (21W)	<b>27</b> 2700K	<b>1</b> 120V	<b>F</b> Fuse and Fuse Holder
New Contr.	<b>15</b> 1500 Lumens (21W)	<b>30</b> 3000K	<b>2</b> 277V	<b>CP†</b> Chicago Plenum
				<b>BR§</b> Emergency Battery Pack
<b>LRM6</b>	<b>17</b> 1700 Lumens (23W)	<b>35</b> 3500K	<b>3§</b> 347V	<b>W/ Remote Test Switch</b>
Remodel	<b>23</b> 2300 Lumens (37W)	<b>40</b> 4100K		<b>LDI</b> Lumen Depreciation Indicator
	<b>28</b> 2800 Lumens (46W)			<b>PD♦</b> Driver compatible with Lutron Programmable Dimming EcoSystem™)

† Consult Factory for Availability

§ New Construction Only

♦ Not Available for 2800 Lumens

### Example: L600WS-CQ

Reflector	Color Options	Finish	Options
<b>L600WS</b>			
Wall Wash	<b>C</b> Clear	<b>Low Iridescent</b>	<b>WH</b> White Flange
	<b>G</b> Gold	<b>Alzak® Finishes:</b>	
	<b>WT</b> Wheat	<b>L</b> Specular	
	<b>PT</b> Pewter	<b>S</b> Satin	
	<b>BZ</b> Bronze	<b>Q*</b> Semi-Specular	
	<b>B</b> Black		
	<b>W</b> White	Blank for White	

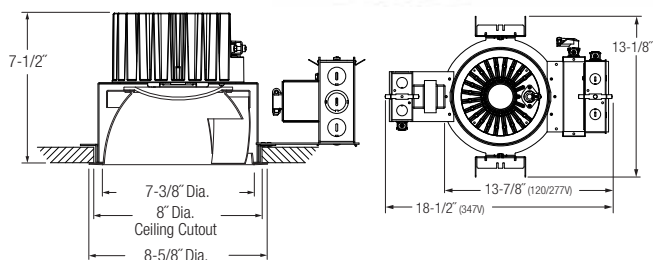
\* Available in clear only

### Example: HB-TL

(New Construction Only)	
Accessories	
<b>HB-TL</b>	25" Tru-Lock® grid ceiling bar hangers, Pair
<b>HB-52</b>	52" C-Channel Bar Hangers, Pair
<b>HB-28</b>	28" C-Channel Bar Hangers, Pair
<b>LB-27</b>	27" Linear Bar Hangers, Pair

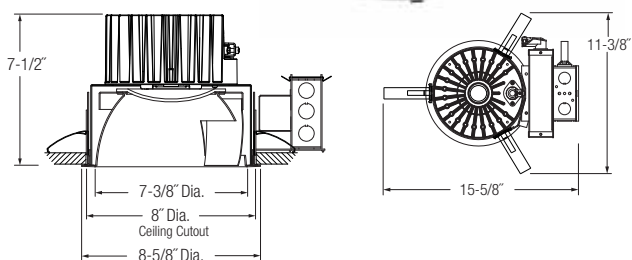
## New Construction

### Dimensions



## Remodel

### Dimensions



### Environmentally friendly, energy efficient

- Lumen packages comparable to 26W, 32W, 42W CFL and 2x26W CFL with energy savings up to 35%
- Superior-quality white LED light output using Chip on Board technology
- No harmful ultraviolet or infrared wavelengths • No lead or mercury

## Product Specifications

### Optics

#### Reflector

Computer-optimized parabolic trim with integral wall wash kicker and frosted conical lens regressed into cone provides uniform distribution with no striations • Concealed LED array provides superior aesthetic appeal both on and off • See ordering information for reflector colors and finishes.

### Electrical

#### Light Engine

MADE IN THE USA • Compact light source delivers uniform illumination without pixilation, enabling excellent beam control • Consistent fixture-to-fixture color temperature within 3 MacAdam Ellipses • Replaceable PC board with quick connector mounts directly to heat sink and incorporates the latest generation of high lumen output LEDs • CRI > 80 • Light engine mounts directly to heat sink and is easily replaceable • Cast aluminum heat sink integrated directly with housing provides superior thermal management to ensure the long life of LED. Universal driver accommodates input voltages of 120V to 277V input volts AC at 50/60Hz • Power factor > 0.9 • Dimmable via 0-10V protocol, increasing efficiency up to 30% while dimming • Easily replaceable from above or below the ceiling.

#### LED Driver

Power factor > 0.9 • Dimmable via 0-10V protocol • Easily replaceable from above or below the ceiling.

#### Life

Rated for 50,000 hours at 70% lumen maintenance.

#### Labels and Listings

- UL Listed for feed through and damp locations • I.B.E.W. Union made
- UL and cUL, RoHS compliant • EMI complies with FCC 47, Part 15, Class A

#### Warranty

5 years when used in accordance with manufacturing guidelines.

### Mechanical

#### New Construction

##### Housing

Low profile, universal housing design installs in suspended grid, plaster or drywall • Integral cast aluminum heat sink conducts heat away from LED light engine • Driver is accessible from above and below ceiling.

##### Mounting Frame

Heavy gauge steel lower housing ring accommodates ceilings up to 2" thick • For thicker ceilings; consult factory.

##### Mounting Bracket

Mounting brackets have 3" vertical adjustment and accept proprietary Tru-Lock® bar hangers. 1-1/2" C-channel and flat linear bars (ordered as accessories) or 1/2" EMT, 3/4" and 1-1/2" lathing channel (by others) • One-piece Tru-Lock® bar hangers have integral T-bar locking screws and alignment notches for locating and locking fixture in the center or 1/4" tile increments.

##### Junction Box

Over size 4" x 6" galvanized steel junction box with (6) 1/2" (2) 3/4" knockouts facilitates quick wiring • Junction box rated for four (4) No. 12 AWG 90° C branch circuit conductors (2-in, 2-out).

#### Remodel

##### Housing

Installs from below ceiling in applications where above ceiling access is not available • Secured in place by factory installed remodel springs • Remodel springs accommodates 1/2" to 1-1/8" ceiling thickness • Integral cast aluminum heat sink conducts heat away from LED light engine • Driver is accessible from below the ceiling.

##### Junction Box

4" x 4" galvanized steel junction box with (4) 1/2" (2) 3/4" knockouts facilitates quick wiring.



➤ Consult factory for photometric information.

**Ordering Information** Rough-in, reflector and accessories each ordered separately.

Example: L8-28351-LDI

Rough-in	Light Engine Lumens	Color Temperature	Voltage	Options
<b>L8</b>				
<b>L8</b>	<b>13</b> 1300 Lumens (21W)	<b>27</b> 2700K	<b>1</b> 120V	<b>F</b> Fuse and Fuse Holder
New	<b>15</b> 1500 Lumens (21W)	<b>30</b> 3000K	<b>2</b> 277V	<b>CP†§</b> Chicago Plenum
Contr.	<b>17</b> 1700 Lumens (21W)	<b>35</b> 3500K	<b>3§</b> 347V	<b>BR§</b> Emergency Battery Pack
<b>LRM8</b>	<b>23</b> 2300 Lumens (23W)	<b>40</b> 4100K		<b>LDI</b> W/ Remote Test Switch
Remodel	<b>28</b> 2800 Lumens (37W)			Lumen Depreciation
				<b>PD♦</b> Indicator
				Driver compatible with
				Lutron Programmable
				Dimming EcoSystem®)

† Consult Factory for Availability

§ New Construction Only

♦ Not Available for 2800 Lumens

Example: L800WS-CQ

Reflector	Color Options	Finish	Options
<b>L800WS</b>			
Wall Wash	<b>C</b> Clear	<b>Low Iridescent</b>	<b>WH</b> White Flange
	<b>G</b> Gold	<b>Alzak® Finishes:</b>	
	<b>WT</b> Wheat	<b>L</b> Specular	
	<b>PT</b> Pewter	<b>S</b> Satin	
	<b>BZ</b> Bronze	<b>Q*</b> Semi-Specular	
	<b>B</b> Black		
	<b>W</b> White	Blank for White	

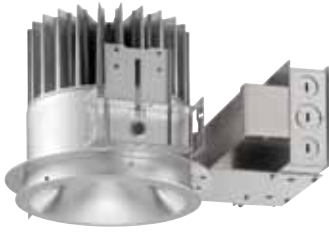
\* Available in clear only

Example: HB-TL

(New Construction Only)	
Accessories	
<b>HB-TL</b>	25" Tru-Lock® grid ceiling bar hangers, Pair
<b>HB-52</b>	52" C-Channel Bar Hangers, Pair
<b>HB-28</b>	28" C-Channel Bar Hangers, Pair
<b>LB-27</b>	27" Linear Bar Hangers, Pair



## INDEX



### Hyperbolic

#### New Construction

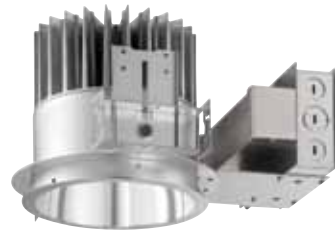
<b>L4</b>	4" New Construction Rough-in	20
<b>L6</b>	6" New Construction Rough-in	22
<b>L8</b>	8" New Construction Rough-in	24

#### Remodel

<b>LRM4</b>	4" Remodel Rough-in	20
<b>LRM6</b>	6" Remodel Rough-in	22
<b>LRM8</b>	8" Remodel Rough-in	24

#### Reflector

<b>L400H</b>	4" Open, Medium Distribution	20
<b>L400HW</b>	4" Open, Wide Distribution	20
<b>L600H</b>	6" Open, Medium Distribution	22
<b>L600HW</b>	6" Open, Wide Distribution	22
<b>L800H</b>	8" Open, Medium Distribution	24
<b>L800HW</b>	8" Open, Wide Distribution	24



### Parabolic

#### New Construction

<b>L4</b>	4" New Construction Rough-in	28
<b>L6</b>	6" New Construction Rough-in	30
<b>L8</b>	8" New Construction Rough-in	32

#### Remodel

<b>LRM4</b>	4" Remodel Rough-in	28
<b>LRM6</b>	6" Remodel Rough-in	30
<b>LRM8</b>	8" Remodel Rough-in	32

#### Reflector

<b>L400P</b>	4" Open	28
<b>L400B</b>	4" Black Baffle	28
<b>L600P</b>	6" Open	30
<b>L600B</b>	6" Black Baffle	30
<b>L800P</b>	8" Open	32
<b>L800B</b>	8" Black Baffle	32



### Wall Wash

#### New Construction

<b>L4</b>	4" New Construction Rough-in	36
<b>L6</b>	6" New Construction Rough-in	38
<b>L8</b>	8" New Construction Rough-in	40

#### Remodel

<b>LRM4</b>	4" Remodel Rough-in	36
<b>LRM6</b>	6" Remodel Rough-in	38
<b>LRM8</b>	8" Remodel Rough-in	40

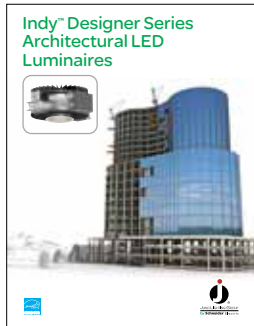
#### Reflector

<b>L400WS</b>	4" Wall Wash	36
<b>L600WS</b>	6" Wall Wash	38
<b>L800WS</b>	8" Wall Wash	40

# Additional literature available

Juno Lighting Group is a leader in high-quality, innovative commercial lighting solutions with the industry's broadest LED fixture offering perfectly suited for commercial buildings, healthcare, institutional, industrial, hospitality and retail applications.

To download these brochures visit: [www.junolightinggroup.com](http://www.junolightinggroup.com)



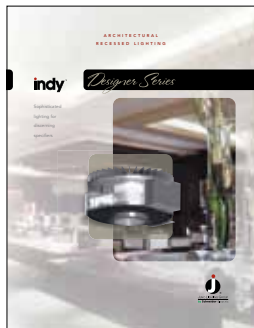
Indy™ Designer Series  
LED Luminaires



Indy™ 1x4, 2x2, 2x4  
LED Luminaires



Indy™ Multi-Head  
LED Luminaires



Indy™ Designer Series



Indy™ Commercial  
Downlights



Indy™ Designer Series -  
Enhanced Spectrum  
LED Luminaires

## Juno Lighting, LLC.

1300 South Wolf Road  
Des Plaines, IL 60018  
Tel: 847-827-9880  
Fax: 847-827-2457  
[www.junolightinggroup.com](http://www.junolightinggroup.com)

LIT-INDY-PERF-LED



Document Number LIT-INDY-PERF-LED



This document has been  
printed on recycled paper

©2013 JUNO LIGHTING, LLC. The marks appearing in this catalog are registered trademarks of Juno Lighting, LLC unless otherwise noted. Products shown in this brochure are covered by U.S. and international patents and patents pending. Specifications subject to change without notice. Printed in U.S.A.

March 2013 YC